

## Product datasheet

# Anti-FbxL12 antibody ab96831

[1 References](#)   [3 Images](#)

### Overview

---

<b>Product name</b>	Anti-FbxL12 antibody
<b>Description</b>	Rabbit polyclonal to FbxL12
<b>Host species</b>	Rabbit
<b>Tested applications</b>	<b>Suitable for:</b> IHC-P, WB
<b>Species reactivity</b>	<b>Reacts with:</b> Mouse, Human <b>Predicted to work with:</b> Rat
<b>Immunogen</b>	Synthetic peptide containing a sequence corresponding to a region within amino acids 315-326 ( RACPKESMDWWM ) of Human FbxL12 (NP_060173). <a href="#">Run BLAST with</a> <a href="#">Run BLAST with</a>
<b>Positive control</b>	HepG2 and NIH-3T3 whole cell lysates; SW480; 293T, A431, H1299, HeLa, Molt-4 and Raji cell lysates

### Properties

---

<b>Form</b>	Liquid
<b>Storage instructions</b>	Shipped at 4°C. Upon delivery aliquot. Store at -20°C or -80°C. Avoid freeze / thaw cycle.
<b>Storage buffer</b>	Preservative: 0.01% Thimerosal (merthiolate) Constituents: 10% Glycerol, 1X PBS, pH 7.0
<b>Purity</b>	Immunogen affinity purified
<b>Clonality</b>	Polyclonal
<b>Isotype</b>	IgG

### Applications

---

Our [Abpromise guarantee](#) covers the use of **ab96831** in the following tested applications.

The application notes include recommended starting dilutions; optimal dilutions/concentrations should be determined by the end user.

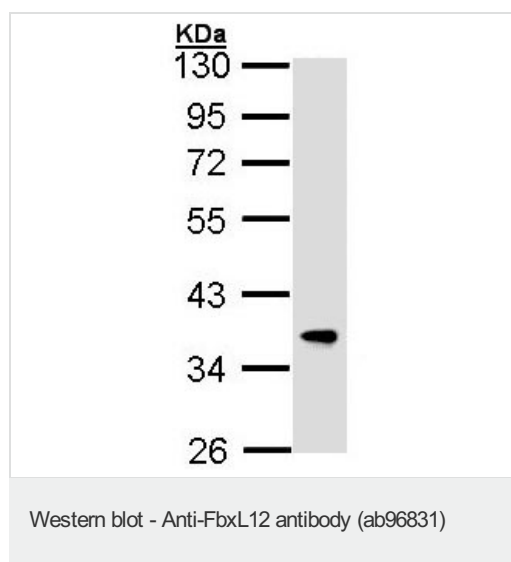
Application	Abreviews	Notes
IHC-P		1/100 - 1/500.
WB		1/500 - 1/3000. Predicted molecular weight: 37 kDa.

## Target

**Function** Substrate-recognition component of the SCF (SKP1-CUL1-F-box protein)-type E3 ubiquitin ligase complex.

**Sequence similarities** Contains 1 F-box domain.  
Contains 8 LRR (leucine-rich) repeats.

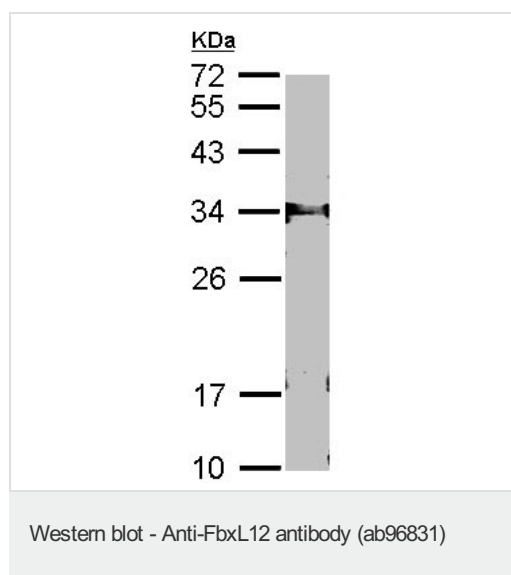
## Images



Anti-FbxL12 antibody (ab96831) at 1/1000 dilution + HepG2 whole cell lysate at 30 µg

**Predicted band size:** 37 kDa

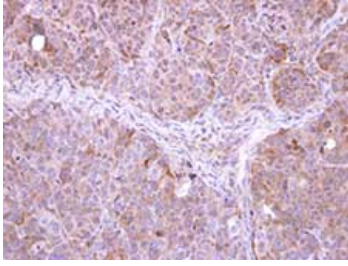
10% SDS-PAGE



Anti-FbxL12 antibody (ab96831) at 1/1000 dilution + NIH-3T3 whole cell lysate at 30 µg

**Predicted band size:** 37 kDa

12% SDS-PAGE



ab96831, at 1/500 dilution, staining FbxL12 in paraffin-embedded SW480 by Immunohistochemistry.

Immunohistochemistry (Formalin/PFA-fixed paraffin-embedded sections) - Anti-FbxL12 antibody (ab96831)

**Please note:** All products are "FOR RESEARCH USE ONLY AND ARE NOT INTENDED FOR DIAGNOSTIC OR THERAPEUTIC USE"

### Our Abpromise to you: Quality guaranteed and expert technical support

- Replacement or refund for products not performing as stated on the datasheet
- Valid for 12 months from date of delivery
- Response to your inquiry within 24 hours
- We provide support in Chinese, English, French, German, Japanese and Spanish
- Extensive multi-media technical resources to help you
- We investigate all quality concerns to ensure our products perform to the highest standards

If the product does not perform as described on this datasheet, we will offer a refund or replacement. For full details of the Abpromise, please visit <https://www.abcam.com/abpromise> or contact our technical team.

### Terms and conditions

- Guarantee only valid for products bought direct from Abcam or one of our authorized distributors