

Product datasheet

Anti-Flotillin 2 / ESA antibody ab20399

1 References 1 Image

Overview

Product name	Anti-Flotillin 2 / ESA antibody
Description	Goat polyclonal to Flotillin 2 / ESA
Host species	Goat
Tested applications	Suitable for: ELISA, WB
Species reactivity	Reacts with: Human
Immunogen	Synthetic peptide corresponding to Human Flotillin 2/ ESA aa 366-379 (C terminal). Sequence: SKIPLIKKATGVQV Run BLAST with Run BLAST with
Positive control	Human lung lysate.
General notes	Previously labelled as Flotillin 2.

Properties

Form	Liquid
Storage instructions	Shipped at 4°C. Upon delivery aliquot and store at -20°C. Avoid freeze / thaw cycles.
Storage buffer	pH: 7.30 Preservative: 0.02% Sodium azide Constituents: 0.05% Tris buffered saline, 0.5% BSA
Purity	Immunogen affinity purified
Clonality	Polyclonal
Isotype	IgG

Applications

Our [Abpromise guarantee](#) covers the use of **ab20399** in the following tested applications.

The application notes include recommended starting dilutions; optimal dilutions/concentrations should be determined by the end user.

Application	Abreviews	Notes
-------------	-----------	-------

ELISA

WB

Application notes

Peptide ELISA: 1/32000.

WB: Use at a concentration of 0.3 µg/ml. Detects a band of approximately 48 kDa. Please note that this is significantly higher than the predicted size of 42kDa but agrees with the findings of Rajendran et al (see ref below). The 48kDa band was successfully blocked by incubation with the immunizing peptide. Use RIPA buffer.

Not tested in other applications.

Optimal dilutions/concentrations should be determined by the end user.

Target

Function

May act as a scaffolding protein within caveolar membranes, functionally participating in formation of caveolae or caveolae-like vesicles. May be involved in epidermal cell adhesion and epidermal structure and function.

Tissue specificity

In skin, expressed in epidermis and epidermal appendages but not in dermis. Expressed in all layers of the epidermis except the basal layer. In hair follicles, expressed in the suprabasal layer but not the basal layer. Also expressed in melanoma and carcinoma cell lines, fibroblasts and foreskin melanocytes.

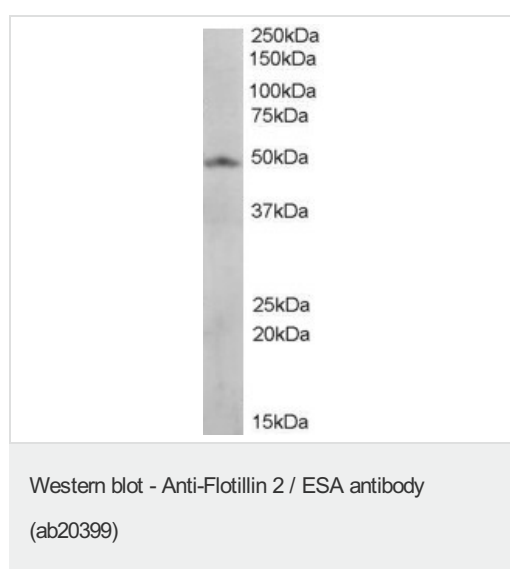
Sequence similarities

Belongs to the band 7/mec-2 family. Flotillin subfamily.

Cellular localization

Cell membrane. Membrane > caveola. Endosome. Membrane-associated protein of caveolae.

Images



Anti-Flotillin 2 / ESA antibody (ab20399) at 1 µg/ml + Human lung lysate at 0.3 µg/ml

Predicted band size: 42 kDa

Observed band size: 48 kDa

[why is the actual band size different from the predicted?](#)

Primary incubation was 1 hour. Detected by chemiluminescence.

Please note: All products are "FOR RESEARCH USE ONLY AND ARE NOT INTENDED FOR DIAGNOSTIC OR THERAPEUTIC USE"

Our Abpromise to you: Quality guaranteed and expert technical support

- Replacement or refund for products not performing as stated on the datasheet
- Valid for 12 months from date of delivery
- Response to your inquiry within 24 hours

- We provide support in Chinese, English, French, German, Japanese and Spanish
- Extensive multi-media technical resources to help you
- We investigate all quality concerns to ensure our products perform to the highest standards

If the product does not perform as described on this datasheet, we will offer a refund or replacement. For full details of the Abpromise, please visit <https://www.abcam.com/abpromise> or contact our technical team.

Terms and conditions

- Guarantee only valid for products bought direct from Abcam or one of our authorized distributors