


Product datasheet

Anti-Frizzled 7 antibody ab51049

5 References 4 Images

Overview

Product name	Anti-Frizzled 7 antibody
Description	Rabbit polyclonal to Frizzled 7
Host species	Rabbit
Tested applications	Suitable for: WB, ELISA, IHC-P, ICC/IF
Species reactivity	Reacts with: Human Predicted to work with: Mouse, Rat, Chicken, Dog 
Immunogen	A region within synthetic peptide: PDFTVFMIKYLMTMVGITT GFWWSGKTL QSWRRFYHRL SHSSKGETAV, corresponding to amino acids 525-574 of Frizzled 7 Run BLAST with ExPASy Run BLAST with NCBI
Positive control	HepG2 cell lysate, Human kidney This antibody gave a positive result when used in the following formaldehyde fixed cell lines: HepG2.

Properties

Form	Liquid
Storage instructions	Shipped at 4°C. Upon delivery aliquot and store at -20°C. Avoid freeze / thaw cycles.
Storage buffer	Preservative: 0.09% Sodium azide Constituents: 2% Sucrose, PBS
Purity	Immunogen affinity purified
Clonality	Polyclonal
Isotype	IgG

Applications

Our [Abpromise guarantee](#) covers the use of **ab51049** in the following tested applications.

The application notes include recommended starting dilutions; optimal dilutions/concentrations should be determined by the end user.

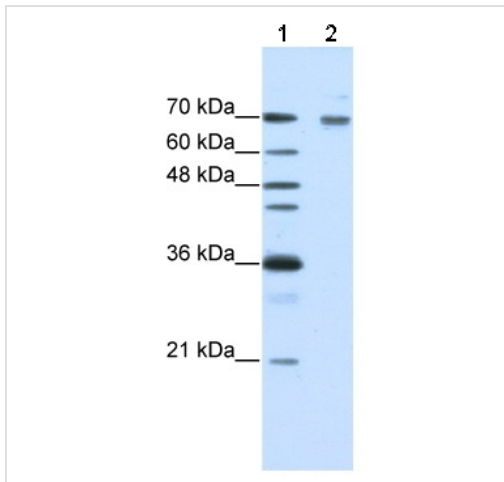
Application	Abreviews	Notes
WB		Use a concentration of 0.5 - 2 µg/ml. Detects a band of approximately 64 kDa (predicted molecular weight: 64 kDa). Good results were obtained when blocked with 5% non-fat dry milk in 0.05% PBS-T.

Application	Abreviews	Notes
ELISA		1/1.5625e+006.
IHC-P		Use a concentration of 4 - 8 µg/ml.
ICC/IF		Use a concentration of 5 µg/ml.

Target

Function	Receptor for Wnt proteins. Most of frizzled receptors are coupled to the beta-catenin canonical signaling pathway, which leads to the activation of disheveled proteins, inhibition of GSK-3 kinase, nuclear accumulation of beta-catenin and activation of Wnt target genes. A second signaling pathway involving PKC and calcium fluxes has been seen for some family members, but it is not yet clear if it represents a distinct pathway or if it can be integrated in the canonical pathway, as PKC seems to be required for Wnt-mediated inactivation of GSK-3 kinase. Both pathways seem to involve interactions with G-proteins. May be involved in transduction and intercellular transmission of polarity information during tissue morphogenesis and/or in differentiated tissues.
Tissue specificity	High expression in adult skeletal muscle and fetal kidney, followed by fetal lung, adult heart, brain, and placenta. Specifically expressed in squamous cell esophageal carcinomas.
Sequence similarities	Belongs to the G-protein coupled receptor Fz/Smo family. Contains 1 FZ (frizzled) domain.
Domain	Lys-Thr-X-X-Trp motif is involved in the activation of the Wnt/beta-catenin signaling pathway. The FZ domain is involved in binding with Wnt ligands.
Cellular localization	Membrane.

Images



Western blot - Anti-Frizzled 7 antibody (ab51049)

Lane 1 : Marker

Lane 2 : Anti-Frizzled 7 antibody (ab51049)
at 1 µg/ml

Lane 2 : HepG2 cell lysate at 10 µg with skim
milk/ PBS at 5 %

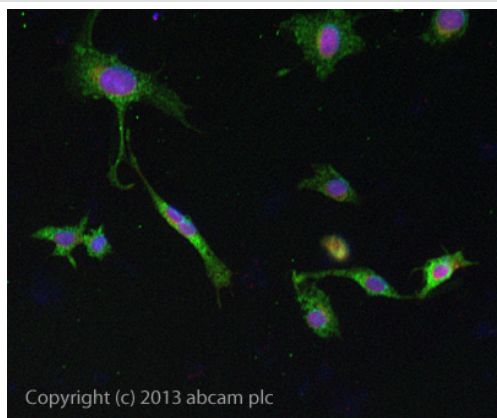
Secondary

Lane 2 : HRP conjugated anti-Rabbit IgG at
1/50000 dilution

Predicted band size: 64 kDa

Observed band size: 64 kDa

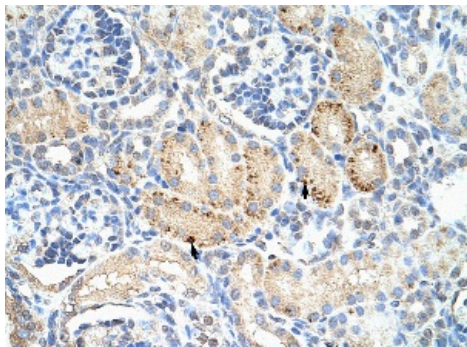
Gel concentration: 12%



Copyright (c) 2013 abcam plc

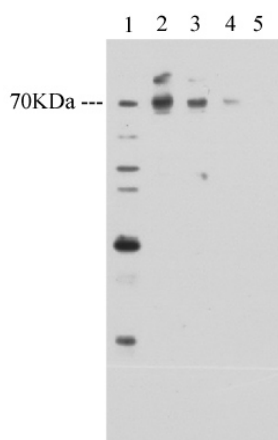
Immunocytochemistry/ Immunofluorescence - Anti-Frizzled 7 antibody (ab51049)

ICC/IF image of ab51049 stained HepG2 cells. The cells were 4% formaldehyde fixed (10 min) and then incubated in 1%BSA / 10% normal goat serum / 0.3M glycine in 0.1% PBS-Tween for 1h to permeabilise the cells and block non-specific protein-protein interactions. The cells were then incubated with the antibody ab51049 at 5µg/ml overnight at +4°C. The secondary antibody (green) was DyLight® 488 goat anti- rabbit (ab96899) IgG (H+L) used at a 1/250 dilution for 1h. Alexa Fluor® 594 WGA was used to label plasma membranes (red) at a 1/200 dilution for 1h. DAPI was used to stain the cell nuclei (blue) at a concentration of 1.43µM.



ab51049 at 4.0 µg/ml staining epithelial cells of renal tubule from human kidney; paraffin embedded; magnification 400x.

Immunohistochemistry (Formalin/PFA-fixed paraffin-embedded sections) - Anti-Frizzled 7 antibody (ab51049)



Lane 2 : Anti-Frizzled 7 antibody (ab51049) at 2 µg/ml

Lane 3 : Anti-Frizzled 7 antibody (ab51049) at 1 µg/ml

Lane 4 : Anti-Frizzled 7 antibody (ab51049) at 0.5 µg/ml

Lane 5 : Anti-Frizzled 7 antibody (ab51049) at 0.25 µg/ml

All lanes : Cell lysate prepared from HepG2 cells

Western blot - Anti-Frizzled 7 antibody (ab51049)

Lysates/proteins at 25 µg per lane.

Predicted band size: 64 kDa

Please note: All products are "FOR RESEARCH USE ONLY AND ARE NOT INTENDED FOR DIAGNOSTIC OR THERAPEUTIC USE"

Our Abpromise to you: Quality guaranteed and expert technical support

- Replacement or refund for products not performing as stated on the datasheet
- Valid for 12 months from date of delivery
- Response to your inquiry within 24 hours
- We provide support in Chinese, English, French, German, Japanese and Spanish
- Extensive multi-media technical resources to help you
- We investigate all quality concerns to ensure our products perform to the highest standards

If the product does not perform as described on this datasheet, we will offer a refund or replacement. For full details of the Abpromise, please visit <https://www.abcam.com/abpromise> or contact our technical team.

Terms and conditions

- Guarantee only valid for products bought direct from Abcam or one of our authorized distributors