


Product datasheet

Anti-GABA A Receptor delta antibody ab110014

1 References 1 Image

Overview

<b>Product name</b>	Anti-GABA A Receptor delta antibody
<b>Description</b>	Rabbit polyclonal to GABA A Receptor delta
<b>Host species</b>	Rabbit
<b>Specificity</b>	Detects endogenous levels of total GABA A Receptor delta protein
<b>Tested applications</b>	<b>Suitable for:</b> WB
<b>Species reactivity</b>	<b>Reacts with:</b> Human <b>Predicted to work with:</b> Mouse, Rat 
<b>Immunogen</b>	A synthesized peptide derived from an internal sequence of human GABA A Receptor delta
<b>Positive control</b>	Extracts from LOVO or HT29 cells

Properties

<b>Form</b>	Liquid
<b>Storage instructions</b>	Shipped at 4°C. Store at -20°C. Stable for 12 months at -20°C.
<b>Storage buffer</b>	pH: 7.40 Preservative: 0.02% Sodium azide Constituents: 0.88% Sodium chloride, 50% Glycerol, PBS
<b>Purity</b>	Immunogen affinity purified
<b>Clonality</b>	Polyclonal
<b>Isotype</b>	IgG

Applications

Our [Abpromise guarantee](#) covers the use of **ab110014** in the following tested applications.

The application notes include recommended starting dilutions; optimal dilutions/concentrations should be determined by the end user.

Application	Abreviews	Notes
WB		1/500 - 1/1000. Predicted molecular weight: 50 kDa.

## Target

### Function

GABA, the major inhibitory neurotransmitter in the vertebrate brain, mediates neuronal inhibition by binding to the GABA/benzodiazepine receptor and opening an integral chloride channel.

### Involvement in disease

Defects in GABRD are the cause of susceptibility to generalized epilepsy with febrile seizures plus type 5 (GEFS+5) [MIM:604233]. Generalized epilepsy with febrile seizures-plus refers to a rare familial condition with incomplete penetrance and large intrafamilial variability. Patients display febrile seizures persisting sometimes beyond the age of 6 years and/or a variety of afebrile seizure types. GEFS+ is a disease combining febrile seizures, generalized seizures often precipitated by fever at age 6 years or more, and partial seizures, with a variable degree of severity.

Defects in GABRD are the cause of susceptibility to idiopathic generalized epilepsy type 10 (IGE10) [MIM:613060]. A disorder characterized by recurring generalized seizures in the absence of detectable brain lesions and/or metabolic abnormalities. Generalized seizures arise diffusely and simultaneously from both hemispheres of the brain.

Defects in GABRD are the cause of susceptibility to juvenile myoclonic epilepsy type 7 (EJM7) [MIM:613060]. A subtype of idiopathic generalized epilepsy. Patients have afebrile seizures only, with onset in adolescence (rather than in childhood) and myoclonic jerks which usually occur after awakening and are triggered by sleep deprivation and fatigue.

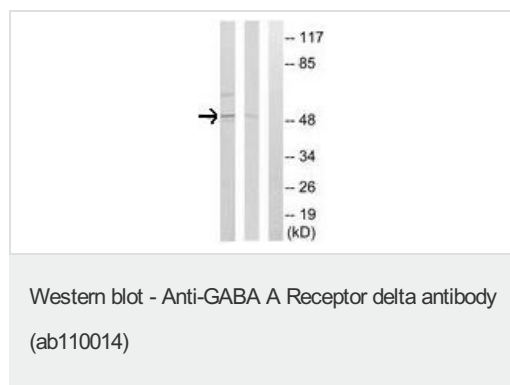
### Sequence similarities

Belongs to the ligand-gated ion channel (TC 1.A.9) family. Gamma-aminobutyric acid receptor (TC 1.A.9.5) subfamily. GABRD sub-subfamily.

### Cellular localization

Cell junction > synapse > postsynaptic cell membrane. Cell membrane.

## Images



**All lanes :** Anti-GABA A Receptor delta antibody (ab110014) at 1/500 dilution

**Lane 1 :** extracts from HT29 cells (5-30 ug total protein) with no immunizing peptide

**Lane 2 :** extracts from LOVO cells (5-30 ug total protein) with no immunizing peptide

**Lane 3 :** extracts from LOVO cells (5-30 ug total protein) with immunizing peptide (5-10 ug)

**Predicted band size:** 50 kDa

**Please note:** All products are "FOR RESEARCH USE ONLY AND ARE NOT INTENDED FOR DIAGNOSTIC OR THERAPEUTIC USE"

## Our Abpromise to you: Quality guaranteed and expert technical support

- Replacement or refund for products not performing as stated on the datasheet
- Valid for 12 months from date of delivery
- Response to your inquiry within 24 hours

- We provide support in Chinese, English, French, German, Japanese and Spanish
- Extensive multi-media technical resources to help you
- We investigate all quality concerns to ensure our products perform to the highest standards

If the product does not perform as described on this datasheet, we will offer a refund or replacement. For full details of the Abpromise, please visit <https://www.abcam.com/abpromise> or contact our technical team.

### **Terms and conditions**

---

- Guarantee only valid for products bought direct from Abcam or one of our authorized distributors