


Product datasheet

Anti-GDF15 antibody ab105738

1 Image

Overview

<b>Product name</b>	Anti-GDF15 antibody
<b>Description</b>	Rabbit polyclonal to GDF15
<b>Host species</b>	Rabbit
<b>Tested applications</b>	<b>Suitable for:</b> WB, Sandwich ELISA
<b>Species reactivity</b>	<b>Reacts with:</b> Mouse, Human <b>Predicted to work with:</b> Rat, Cow, Dog, Pig 
<b>Immunogen</b>	Synthetic peptide corresponding to amino acids near the C-terminal of Mouse GDF15.
<b>Positive control</b>	Recombinant MBP-GDF15 fusion protein; Yeast cell lysate expressing SUMO-mouse GDF15; Human GDF15 monomer.
<b>General notes</b>	Expiration date is one (1) year from date of opening product.

Properties

<b>Form</b>	Liquid
<b>Storage instructions</b>	Shipped at 4°C. Store at +4°C short term (1-2 weeks). Upon delivery aliquot. Store at -20°C or -80°C. Avoid freeze / thaw cycle.
<b>Storage buffer</b>	pH: 7.20 Preservative: 0.01% Sodium azide Constituents: 0.42% Potassium phosphate, 0.88% Sodium chloride
<b>Purity</b>	Protein A purified
<b>Purification notes</b>	ab105738 is affinity purified from monospecific antiserum by immunoaffinity chromatography.
<b>Clonality</b>	Polyclonal
<b>Isotype</b>	IgG

Applications

Our [Abpromise guarantee](#) covers the use of **ab105738** in the following tested applications.

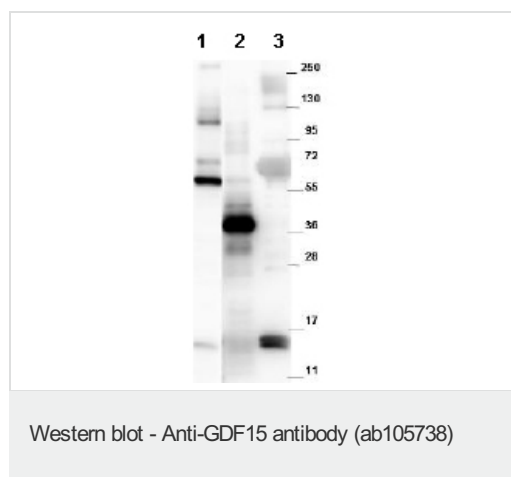
The application notes include recommended starting dilutions; optimal dilutions/concentrations should be determined by the end user.

Application	Abreviews	Notes
WB		1/3000 - 1/7000. Predicted molecular weight: 33 kDa.
Sandwich ELISA		1/100000 - 1/120000.

## Target

<b>Tissue specificity</b>	Highly expressed in placenta, with lower levels in prostate and colon and some expression in kidney.
<b>Sequence similarities</b>	Belongs to the TGF-beta family.
<b>Cellular localization</b>	Secreted.

## Images



**All lanes :** Anti-GDF15 antibody (ab105738) at 1/1000 dilution

**Lane 1 :** Recombinant MBP-GDF15 fusion protein purified from E.coli

**Lane 2 :** Yeast cell lysate expressing SUMO-Mouse GDF15

**Lane 3 :** Human GDF15 monomer purified from CHO-K1 cells

### Secondary

**All lanes :** Goat-anti-Rabbit HRP at 1/40000 dilution

Performed under reducing conditions.

**Predicted band size:** 33 kDa

Expect bands in Western blots of approximately 14 and 28 kDa in size corresponding to GDF15 monomer and dimer, respectively.

**Please note:** All products are "FOR RESEARCH USE ONLY AND ARE NOT INTENDED FOR DIAGNOSTIC OR THERAPEUTIC USE"

## Our Abpromise to you: Quality guaranteed and expert technical support

- Replacement or refund for products not performing as stated on the datasheet
- Valid for 12 months from date of delivery
- Response to your inquiry within 24 hours
- We provide support in Chinese, English, French, German, Japanese and Spanish

- Extensive multi-media technical resources to help you
- We investigate all quality concerns to ensure our products perform to the highest standards

If the product does not perform as described on this datasheet, we will offer a refund or replacement. For full details of the Abpromise, please visit <https://www.abcam.com/abpromise> or contact our technical team.

### **Terms and conditions**

---

- Guarantee only valid for products bought direct from Abcam or one of our authorized distributors