

Product datasheet

Anti-GLS2 antibody ab113509

★★★★★ 2 Abreviews 9 References 5 Images

Overview

Product name	Anti-GLS2 antibody
Description	Rabbit polyclonal to GLS2
Host species	Rabbit
Tested applications	Suitable for: ICC/IF, IHC-Fr, WB, IHC-P
Species reactivity	Reacts with: Mouse, Rat, Human
Immunogen	Synthetic peptide corresponding to Human GLS2 (internal sequence). (Peptide available as ab169954)
Positive control	Rat kidney tissue lysate

Properties

Form	Liquid
Storage instructions	Shipped at 4°C. Store at +4°C short term (1-2 weeks). Upon delivery aliquot. Store at -20°C long term. Avoid freeze / thaw cycle.
Storage buffer	Preservative: 0.02% Sodium azide Constituent: 99.98% PBS
Purity	Immunogen affinity purified
Clonality	Polyclonal
Isotype	IgG

Applications

Our [Abpromise guarantee](#) covers the use of **ab113509** in the following tested applications.

The application notes include recommended starting dilutions; optimal dilutions/concentrations should be determined by the end user.

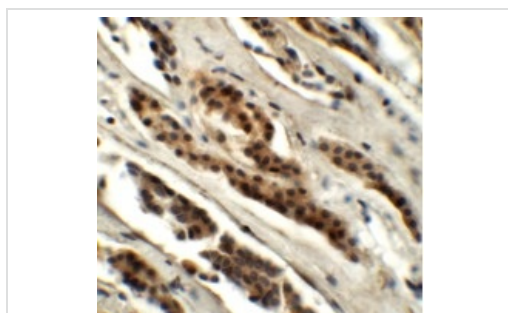
Application	Abreviews	Notes
ICC/IF		Use a concentration of 20 µg/ml.
IHC-Fr		1/1000.

Application	Abreviews	Notes
WB		Use a concentration of 0.5 - 1 µg/ml. Predicted molecular weight: 66 kDa. Can be blocked with GLS2 peptide (ab169954) .
IHC-P	★★★★☆	Use a concentration of 5 µg/ml.

Target

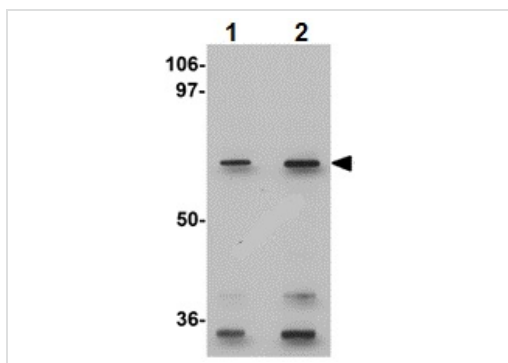
Function	Plays an important role in the regulation of glutamine catabolism. Promotes mitochondrial respiration and increases ATP generation in cells by catalyzing the synthesis of glutamate and alpha-ketoglutarate. Increases cellular anti-oxidant function via NADH and glutathione production. May play a role in preventing tumor proliferation.
Tissue specificity	Highly expressed in liver. Expressed in brain and pancreas. Not observed in heart, placenta, lung, skeletal muscle and kidney. Expression is significantly reduced in hepatocellular carcinomas.
Sequence similarities	Belongs to the glutaminase family. Contains 2 ANK repeats.
Cellular localization	Mitochondrion.

Images



Immunohistochemistry of GLS2 in human kidney tissue with ab113509 antibody at 5 µg/mL.

Immunohistochemistry (Formalin/PFA-fixed paraffin-embedded sections) - Anti-GLS2 antibody (ab113509)



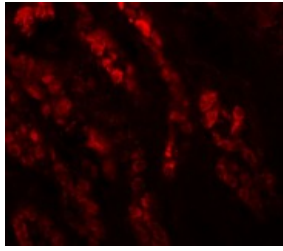
Lane 1 : Anti-GLS2 antibody (ab113509) at 0.5 µg/ml

Lane 2 : Anti-GLS2 antibody (ab113509) at 1 µg/ml

All lanes : GLS2 in Rat Kidney Lysate

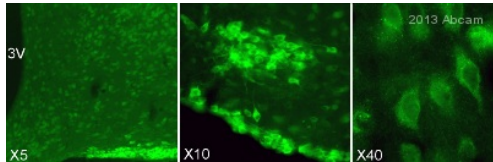
Predicted band size: 66 kDa

Western blot - Anti-GLS2 antibody (ab113509)



Immunofluorescence of GLS2 in Human Kidney cells using ab113509 at 20 ug/ml.

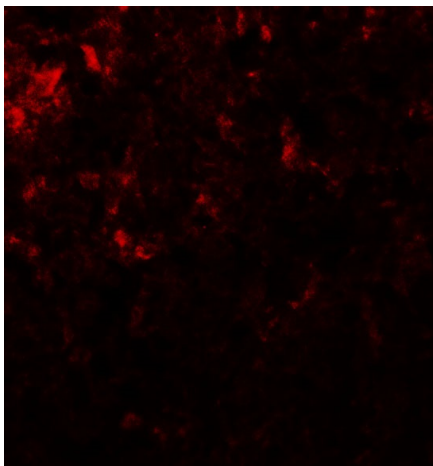
Immunocytochemistry/ Immunofluorescence - Anti-GLS2 antibody (ab113509)



Ab113509 IHC-FoFr on rat brain tissue sections. The antibody was used at 1/1000 in the free floating technique for 18 hours at 20°C. There was no blocking step.

Immunohistochemistry (Frozen sections) - Anti-GLS2 antibody (ab113509)

Image Courtesy of Sophie Pezet, INSERM, France



Immunocytochemistry/Immunofluorescence analysis of rat liver cells labelling GLS2 with ab113509 at 20 µg/mL.

Immunocytochemistry/ Immunofluorescence - Anti-GLS2 antibody (ab113509)

Please note: All products are "FOR RESEARCH USE ONLY AND ARE NOT INTENDED FOR DIAGNOSTIC OR THERAPEUTIC USE"

Our Abpromise to you: Quality guaranteed and expert technical support

- Replacement or refund for products not performing as stated on the datasheet
- Valid for 12 months from date of delivery
- Response to your inquiry within 24 hours
- We provide support in Chinese, English, French, German, Japanese and Spanish
- Extensive multi-media technical resources to help you
- We investigate all quality concerns to ensure our products perform to the highest standards

If the product does not perform as described on this datasheet, we will offer a refund or replacement. For full details of the Abpromise, please visit <https://www.abcam.com/abpromise> or contact our technical team.

Terms and conditions

- Guarantee only valid for products bought direct from Abcam or one of our authorized distributors