

Product datasheet

Anti-GOSR1 antibody [EP1768Y] ab53288

Recombinant RabMAB

★★★★☆ 1 Abreviews 7 Images

Overview

Product name	Anti-GOSR1 antibody [EP1768Y]
Description	Rabbit monoclonal [EP1768Y] to GOSR1
Host species	Rabbit
Specificity	The mouse and rat recommendation is based on the WB results. We do not guarantee IHC-P for mouse and rat.
Tested applications	Suitable for: ICC/IF, WB, ICC, Flow Cyt, IHC-P Unsuitable for: IP
Species reactivity	Reacts with: Mouse, Rat, Human
Immunogen	Synthetic peptide within Human GOSR1 (N terminal). The exact sequence is proprietary.
Positive control	SKBR-3 cell lysate 3T3 cell lysate HeLa cells Human stomach carcinoma
General notes	

Our RabMAB[®] technology is a patented hybridoma-based technology for making rabbit monoclonal antibodies. For details on our patents, please refer to [RabMab[®] patents](#)

We are constantly working hard to ensure we provide our customers with best in class antibodies. As a result of this work we are pleased to now offer this antibody in purified format. We are in the process of updating our datasheets. The purified format is designated 'PUR' on our product labels. If you have any questions regarding this update, please contact our Scientific Support team.

This product is a recombinant rabbit monoclonal antibody.

Properties

Form	Liquid
Storage instructions	Shipped at 4°C. Store at +4°C short term (1-2 weeks). Upon delivery aliquot. Store at -20°C. Avoid freeze / thaw cycle. Stable for 12 months at -20°C.
Storage buffer	pH: 7.20 Preservative: 0.01% Sodium azide Constituents: 59% PBS, 40% Glycerol, 0.05% BSA

Purity	Protein A purified
Clonality	Monoclonal
Clone number	EP1768Y
Isotype	IgG

Applications

Our [Abpromise guarantee](#) covers the use of **ab53288** in the following tested applications.

The application notes include recommended starting dilutions; optimal dilutions/concentrations should be determined by the end user.

Application	Abreviews	Notes
ICC/IF		1/150. For unpurified use at 1/50 - 1/100.
WB	★★★★☆	1/1000. Detects a band of approximately 29 kDa (predicted molecular weight: 29 kDa). For unpurified use at 1/250 - 1/500.
ICC		1/50 - 1/100.
Flow Cyt		1/120. ab172730 - Rabbit monoclonal IgG, is suitable for use as an isotype control with this antibody. For unpurified use at 1/30.
IHC-P		1/100. The mouse and rat recommendation is based on the WB results. We do not guarantee IHC-P for mouse and rat.

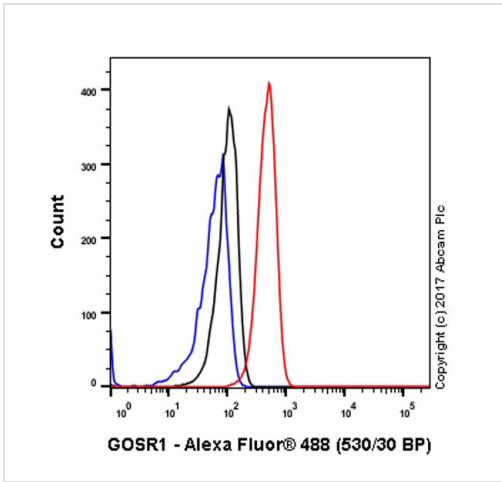
Application notes Is unsuitable for IP.

Target

Relevance GOSR1 is a trafficking membrane protein which transports proteins among the endoplasmic reticulum and the Golgi and between Golgi compartments; it is considered an essential component of the Golgi SNAP receptor (SNARE) complex.

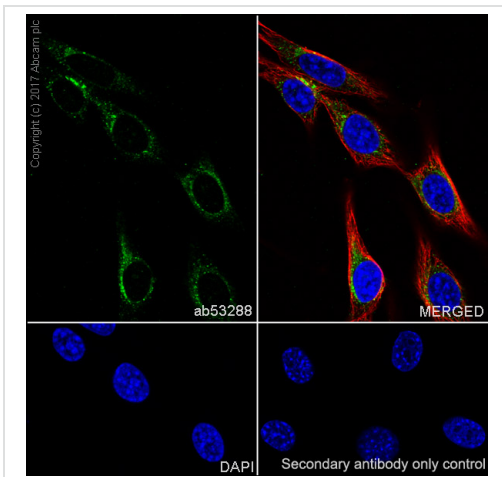
Cellular localization Cell Membrane, Endoplasmic reticulum and Golgi Apparatus

Images



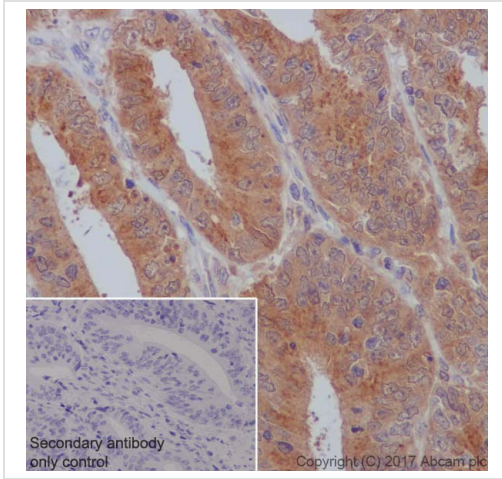
Flow Cytometry - Anti-GOSR1 antibody [EP1768Y] (ab53288)

Flow Cytometry analysis of HeLa (Human cervix adenocarcinoma epithelial cell) cells labeling GOSR1 with purified ab53288 at 1:120 dilution (10 µg/ml) (red). Cells were fixed with 4% Paraformaldehyde and permeabilised with 90% methanol. A Goat anti rabbit IgG (Alexa Fluor® 488) secondary antibody was used at 1:2000 dilution. Isotype control - Rabbit monoclonal IgG (Black). Unlabeled control - Cell without incubation with primary antibody and secondary antibody (Blue).



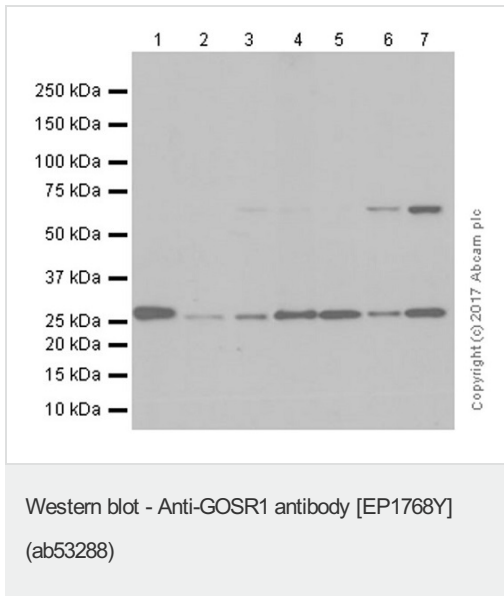
Immunocytochemistry/ Immunofluorescence - Anti-GOSR1 antibody [EP1768Y] (ab53288)

Immunocytochemistry/ Immunofluorescence analysis of NIH/3T3 (Mouse embryonic fibroblast) cells labeling GOSR1 with Purified ab53288 at 1:150 dilution. Cells were fixed in 100% Methanol. Cells were counterstained with None. ab150077 Goat anti rabbit IgG(Alexa Fluor® 488) was used as the secondary antibody at 1:1000 dilution. DAPI nuclear counterstain. PBS instead of the primary antibody was used as the secondary antibody only control.



Immunohistochemistry (Formalin/PFA-fixed paraffin-embedded sections) - Anti-GOSR1 antibody [EP1768Y] (ab53288)

Immunohistochemistry (Formalin/PFA-fixed paraffin-embedded sections) analysis of Human colon carcinoma tissue sections labeling GOSR1 with Purified ab53288 at 1:100 dilution (12.3 µg/ml). Heat mediated antigen retrieval was performed using ab93684 (Tris/EDTA buffer, pH 9.0). Tissue was counterstained with Hematoxylin. ImmunoHistoProbe one step HRP Polymer (ready to use) secondary antibody was used at 1:0 dilution. PBS instead of the primary antibody was used as the negative control.



All lanes : Anti-GOSR1 antibody [EP1768Y] (ab53288) at 1/1000 dilution (purified)

Lane 1 : SK-BR-3 (Human breast adenocarcinoma epithelial cell) whole cell lysates

Lane 2 : NIH/3T3 (Mouse embryonic fibroblast) whole cell lysates

Lane 3 : Neuro-2a (Mouse neuroblastoma neuroblast) whole cell lysates

Lane 4 : PC-12 (Rat adrenal gland pheochromocytoma) whole cell lysates

Lane 5 : C6 (Rat glial tumor glial cell) whole cell lysates

Lane 6 : SH-SY5Y (Human neuroblastoma epithelial cell) whole cell lysates

Lane 7 : HeLa (Human cervix adenocarcinoma epithelial cell) whole cell lysates

Lysates/proteins at 20 µg per lane.

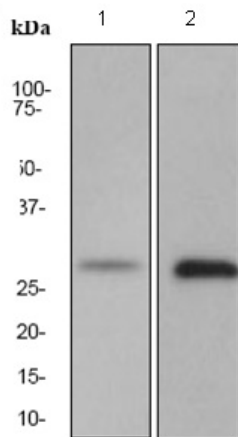
Secondary

All lanes : Goat Anti-Rabbit IgG H&L (HRP) (ab97051) at 1/20000 dilution

Predicted band size: 29 kDa

Observed band size: 29 kDa

Blocking and diluting buffer: 5% NFD/MTBST



Western blot - Anti-GOSR1 antibody [EP1768Y] (ab53288)

All lanes : Anti-GOSR1 antibody [EP1768Y] (ab53288) at 1/500 dilution (unpurified)

Lane 1 : SKBR-3 cell lysate

Lane 2 : 3T3 cell lysate

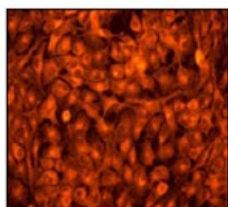
Lysates/proteins at 10 µg per lane.

Secondary

All lanes : Goat anti-rabbit HRP at 1/2000 dilution

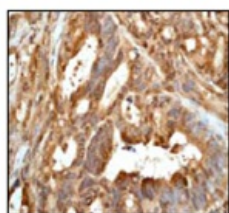
Predicted band size: 29 kDa

Observed band size: 29 kDa



Immunocytochemistry/ Immunofluorescence - Anti-GOSR1 antibody [EP1768Y] (ab53288)

HeLa cells stained with unpurified ab53288 at 1/50 - 1/100 dilution



Immunohistochemistry (Formalin/PFA-fixed paraffin-embedded sections) - Anti-GOSR1 antibody [EP1768Y] (ab53288)

Human stomach carcinoma staining with unpurified ab53288 at 1/100 - 1/250 dilution

Please note: All products are "FOR RESEARCH USE ONLY AND ARE NOT INTENDED FOR DIAGNOSTIC OR THERAPEUTIC USE"

Our Abpromise to you: Quality guaranteed and expert technical support

- Replacement or refund for products not performing as stated on the datasheet
- Valid for 12 months from date of delivery

- Response to your inquiry within 24 hours
- We provide support in Chinese, English, French, German, Japanese and Spanish
- Extensive multi-media technical resources to help you
- We investigate all quality concerns to ensure our products perform to the highest standards

If the product does not perform as described on this datasheet, we will offer a refund or replacement. For full details of the Abpromise, please visit <https://www.abcam.com/abpromise> or contact our technical team.

Terms and conditions

- Guarantee only valid for products bought direct from Abcam or one of our authorized distributors