

Product datasheet

Anti-LGR5 antibody [EPR3065Y] ab75850

Recombinant RabMAb

★★★★☆ 7 Abreviews 23 References 1 Image

Overview

Product name	Anti-LGR5 antibody [EPR3065Y]
Description	Rabbit monoclonal [EPR3065Y] to LGR5
Host species	Rabbit
Tested applications	Suitable for: WB, IP Unsuitable for: Flow Cyt, ICC/IF or IHC-P
Species reactivity	Reacts with: Mouse, Rat, Human
Immunogen	Synthetic peptide within Human LGR5 aa 800-900 (C terminal). The exact sequence is proprietary. (Peptide available as ab221221)
Positive control	Fetal skeletal muscle lysate.
General notes	

Our RabMAb[®] technology is a patented hybridoma-based technology for making rabbit monoclonal antibodies. For details on our patents, please refer to [RabMab[®] patents](#)

This product is a recombinant rabbit monoclonal antibody.

Properties

Form	Liquid
Storage instructions	Shipped at 4°C. Upon delivery aliquot and store at -20°C. Avoid freeze / thaw cycles.
Storage buffer	pH: 7.20 Preservative: 0.05% Sodium azide Constituents: 0.1% BSA, 40% Glycerol, 9.85% Tris glycine, 50% Tissue culture supernatant
Purity	Tissue culture supernatant
Clonality	Monoclonal
Clone number	EPR3065Y
Isotype	IgG

Applications

Our [Abpromise guarantee](#) covers the use of **ab75850** in the following tested applications.

The application notes include recommended starting dilutions; optimal dilutions/concentrations should be determined by the end user.

Application	Abreviews	Notes
WB	★★★★☆	1/1000. Predicted molecular weight: 100 kDa. Can be blocked with LGR5 peptide (ab221221) .
IP		1/20.

Application notes Is unsuitable for Flow Cyt, ICC/IF or IHC-P.

Target

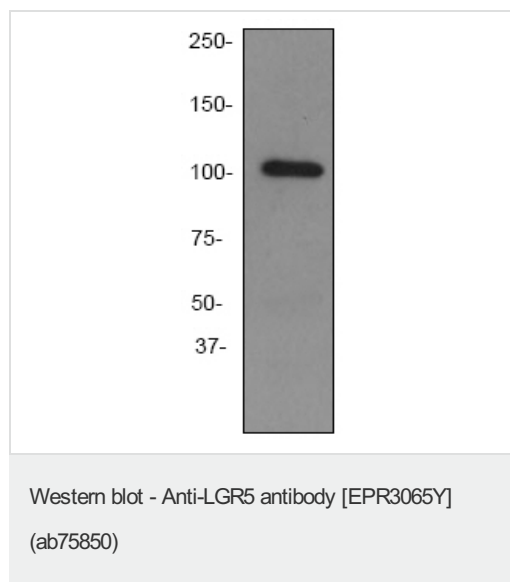
Function Orphan receptor. Stem cell marker of the intestinal epithelium and the hair follicle. Target gene of Wnt signaling.

Tissue specificity Expressed in skeletal muscle, placenta, spinal cord, and various region of brain. Expressed at the base of crypts in colonic and small mucosa stem cells. In premalignant cancer expression is not restricted to the cript base. Overexpressed in cancers of the ovary, colon and liver.

Sequence similarities Belongs to the G-protein coupled receptor 1 family.
Contains 16 LRR (leucine-rich) repeats.
Contains 1 LRRNT domain.

Cellular localization Cell membrane.

Images



Anti-LGR5 antibody [EPR3065Y] (ab75850) at 1/1000 dilution + Fetal skeletal muscle lysate at 10 µg

Secondary

HRP-labeled goat anti-rabbit at 1/2000 dilution

Predicted band size: 100 kDa

Observed band size: 100 kDa

Please note: All products are "FOR RESEARCH USE ONLY AND ARE NOT INTENDED FOR DIAGNOSTIC OR THERAPEUTIC USE"

Our Abpromise to you: Quality guaranteed and expert technical support

- Replacement or refund for products not performing as stated on the datasheet

- Valid for 12 months from date of delivery
- Response to your inquiry within 24 hours

- We provide support in Chinese, English, French, German, Japanese and Spanish
- Extensive multi-media technical resources to help you
- We investigate all quality concerns to ensure our products perform to the highest standards

If the product does not perform as described on this datasheet, we will offer a refund or replacement. For full details of the Abpromise, please visit <https://www.abcam.com/abpromise> or contact our technical team.

Terms and conditions

- Guarantee only valid for products bought direct from Abcam or one of our authorized distributors