

## Product datasheet

# Anti-GRB2 antibody ab2234

★★★★☆ 1 Abreviews 7 Images

### Overview

<b>Product name</b>	Anti-GRB2 antibody
<b>Description</b>	Goat polyclonal to GRB2
<b>Host species</b>	Goat
<b>Tested applications</b>	<b>Suitable for:</b> ELISA, IHC-P, WB
<b>Species reactivity</b>	<b>Reacts with:</b> Mouse, Rat, Human, Pig <b>Predicted to work with:</b> Cow, Dog
<b>Immunogen</b>	Synthetic peptide: PRNYVTPVNRNV, corresponding to C terminal amino acids 206-217 of Human GRB2. <a href="#">Run BLAST with ExPASy</a> <a href="#">Run BLAST with NCBI</a>
<b>General notes</b>	Principal Names - GRB2; growth factor receptor-bound protein 2 Official Gene Symbol - GRB2. GenBank Accession Number – NP_002077. LocusLink ID - 2885. Gene Ontology terms - cell-cell signalling; SH3/SH2 adaptor protein; EGF receptor signalling pathway; RAS protein signal transduction; cell shape and cell size control.

### Properties

<b>Form</b>	Liquid
<b>Storage instructions</b>	Shipped at 4°C. Upon delivery aliquot and store at -20°C or -80°C. Avoid repeated freeze / thaw cycles.
<b>Storage buffer</b>	Preservative: 0.02% Sodium Azide Constituents: 0.5% BSA, 0.5mg/ml Tris, pH 7.3
<b>Purity</b>	Immunogen affinity purified
<b>Purification notes</b>	Purified from goat serum by ammonium sulphate precipitation followed by antigen affinity chromatography using the immunizing peptide.
<b>Clonality</b>	Polyclonal
<b>Isotype</b>	IgG

### Applications

Our [Abpromise guarantee](#) covers the use of **ab2234** in the following tested applications.

The application notes include recommended starting dilutions; optimal dilutions/concentrations should be determined by the end user.

Application	Abreviews	Notes
-------------	-----------	-------

ELISA

IHC-P

WB



**Application notes**

ELISA: Use at an assay dependent dilution.  
 IHC-P: Use at a concentration of 0.1 - 0.3 µg/ml. In paraffin embedded Human Tonsil, stains mantle zone and to a lesser extent germinal centre.  
 WB: Use at a concentration of 1 - 3 µg/ml. Predicted molecular weight: 30 kDa.

Not yet tested in other applications.  
 Optimal dilutions/concentrations should be determined by the end user.

**Target**

**Function**

Adapter protein that provides a critical link between cell surface growth factor receptors and the Ras signaling pathway.  
 Isoform GRB3-3 does not bind to phosphorylated epidermal growth factor receptor (EGFR) but inhibits EGF-induced transactivation of a RAS-responsive element. Isoform GRB3-3 acts as a dominant negative protein over GRB2 and by suppressing proliferative signals, may trigger active programmed cell death.

**Sequence similarities**

Belongs to the GRB2/sem-5/DRK family.  
 Contains 1 SH2 domain.  
 Contains 2 SH3 domains.

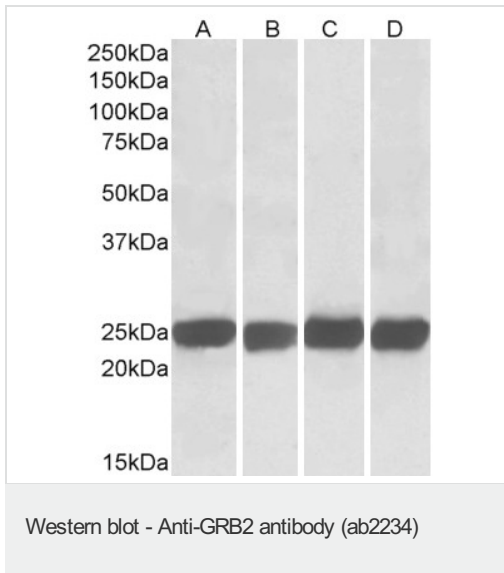
**Domain**

The SH3 domains mediate interaction with RALGPS1 and SHB.

**Cellular localization**

Golgi apparatus.

**Images**



**All lanes** : Anti-GRB2 antibody (ab2234) at 0.05 µg/ml

**Lane 1** : Mouse brain lysate

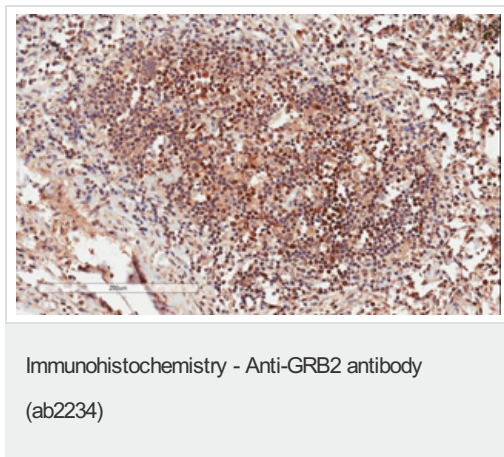
**Lane 2** : Rat brain lysate

**Lane 3** : Mouse spleen lysate

**Lane 4** : Rat spleen lysate

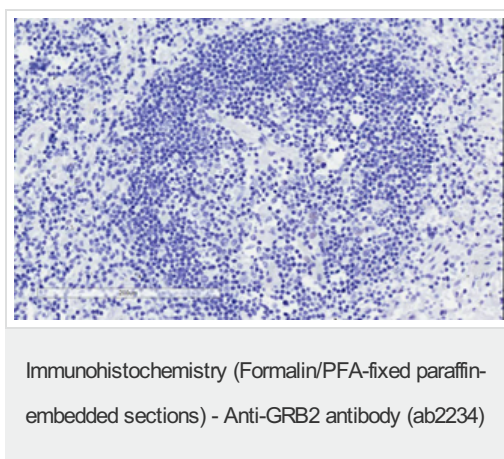
Lysates/proteins at 35 µg per lane.

**Predicted band size:** 30 kDa

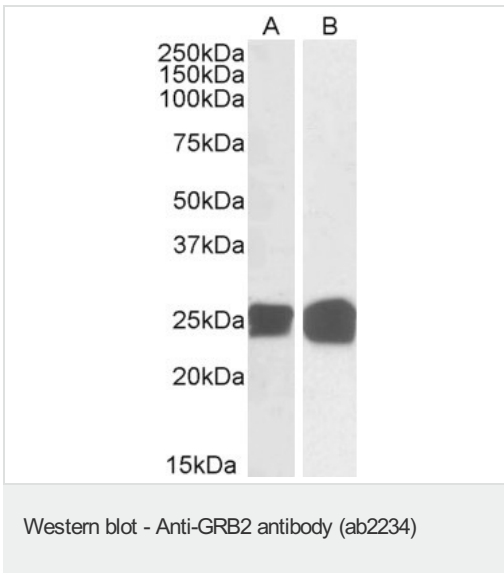
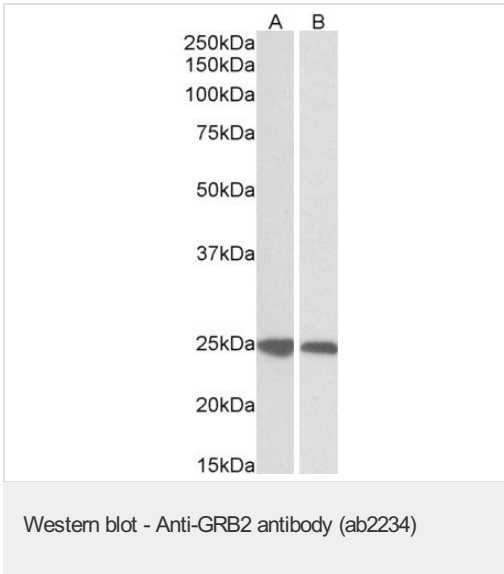


ab2234 (1µg/ml) staining of paraffin embedded Human Lymph Node tissue.

Microwaved antigen retrieval with citrate buffer pH 6, HRP-staining.



ab2234 negative control showing staining of paraffin embedded Human Lymph Node tissue , with no primary antibody.



**Lane 1 :** Anti-GRB2 antibody (ab2234) at 0.05 µg/ml

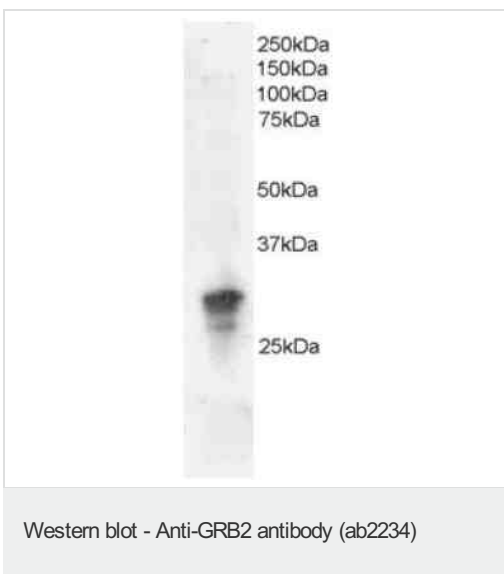
**Lane 2 :** Anti-GRB2 antibody (ab2234) at 0.05 µg

**Lane 1 :** Human thymus lysate

**Lane 2 :** Molt4 cell lysate

Lysates/proteins at 35 µg per lane.

**Predicted band size:** 30 kDa

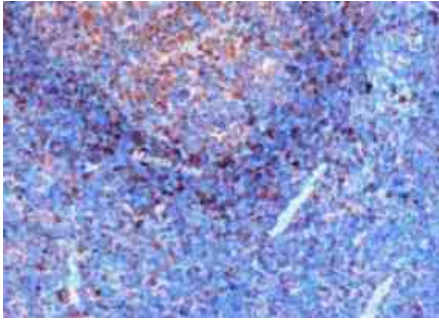


Anti-GRB2 antibody (ab2234) at 2 µg/ml + Jurkat lysate (RIPA buffer, 35µg total protein per lane).

**Predicted band size:** 30 kDa

**Observed band size:** 30 kDa

Ab2234 staining (2µg/ml) of Jurkat lysate (RIPA buffer, 35µg total protein per lane). Primary incubated for 1 hour. Detected by western blot using chemiluminescence Primary incubated for 1 hour. Detected by western blot using chemiluminescence.



Ab2234 (0.3ug/ml) staining of paraffin embedded Human Tonsil. Microwaved antigen retrieval with citrate buffer pH6, HRP-staining.

Immunohistochemistry (Formalin/PFA-fixed paraffin-embedded sections) - Anti-GRB2 antibody (ab2234)

**Please note:** All products are "FOR RESEARCH USE ONLY AND ARE NOT INTENDED FOR DIAGNOSTIC OR THERAPEUTIC USE"

### Our Abpromise to you: Quality guaranteed and expert technical support

- Replacement or refund for products not performing as stated on the datasheet
- Valid for 12 months from date of delivery
- Response to your inquiry within 24 hours
- We provide support in Chinese, English, French, German, Japanese and Spanish
- Extensive multi-media technical resources to help you
- We investigate all quality concerns to ensure our products perform to the highest standards

If the product does not perform as described on this datasheet, we will offer a refund or replacement. For full details of the Abpromise, please visit <https://www.abcam.com/abpromise> or contact our technical team.

### Terms and conditions

- Guarantee only valid for products bought direct from Abcam or one of our authorized distributors