

## Product datasheet

# Anti-Galectin 3 antibody [RM0082-5L36] ab86058

**KO** VALIDATED

[2 Images](#)

### Overview

<b>Product name</b>	Anti-Galectin 3 antibody [RM0082-5L36]
<b>Description</b>	Rat monoclonal [RM0082-5L36] to Galectin 3
<b>Host species</b>	Rat
<b>Tested applications</b>	<b>Suitable for:</b> WB
<b>Species reactivity</b>	<b>Reacts with:</b> Mouse, Human
<b>Immunogen</b>	Recombinant full length Mouse protein

### Properties

<b>Form</b>	Liquid
<b>Storage instructions</b>	Shipped at 4°C. After reconstitution store at -20°C. Avoid freeze / thaw cycles.
<b>Storage buffer</b>	Preservative: None Constituents: PBS
<b>Purification notes</b>	The IgG fraction of culture supernatant was purified by Protein A/G affinity chromatography.
<b>Clonality</b>	Monoclonal
<b>Clone number</b>	RM0082-5L36
<b>Isotype</b>	IgG2

### Applications

Our [Abpromise guarantee](#) covers the use of **ab86058** in the following tested applications.

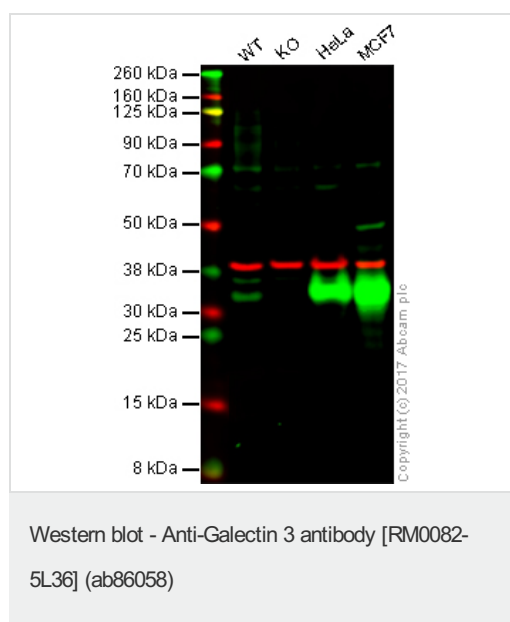
The application notes include recommended starting dilutions; optimal dilutions/concentrations should be determined by the end user.

Application	Abreviews	Notes
WB		1/500 - 1/1000. Predicted molecular weight: 26 kDa.

### Target

<b>Function</b>	Galactose-specific lectin which binds IgE. May mediate with the alpha-3, beta-1 integrin the stimulation by CSPG4 of endothelial cells migration. Together with DMBT1, required for terminal differentiation of columnar epithelial cells during early embryogenesis.
<b>Tissue specificity</b>	A major expression is found in the colonic epithelium. It is also abundant in the activated macrophages.
<b>Sequence similarities</b>	Contains 1 galectin domain.
<b>Cellular localization</b>	Nucleus. Cytoplasmic in adenomas and carcinomas. May be secreted by a non-classical secretory pathway and associate with the cell surface.

## Images



**Lane 1:** Wild-type HAP1 whole cell lysate (20 µg)

**Lane 2:** Galectin 3 knockout HAP1 whole cell lysate (20 µg)

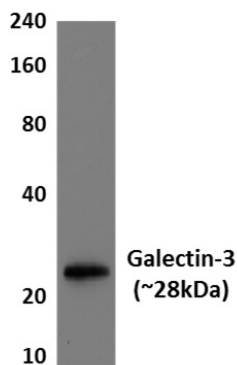
**Lane 3:** HeLa whole cell lysate (20 µg)

**Lane 4:** MCF7 whole cell lysate (20 µg)

**Lanes 1 - 4:** Merged signal (red and green). Green - ab86058 observed at 35 kDa. Red - loading control, [ab181602](#), observed at 37 kDa.

ab86058 was shown to specifically recognize Galectin 3 in wild-type HAP1 cells along with additional cross-reactive bands. NO band was observed when Galectin 3 (KO) knockout samples were examined. Wild-type and Galectin 3 knockout samples were subjected to SDS-PAGE. ab86058 and [ab181602](#) (Rabbit anti GAPDH loading control) were incubated overnight at 4°C at 1/1000 dilution and 1/10,000 dilution respectively. Blots were developed with Goat anti-Mouse IgG H&L (IRDye® 800CW) preabsorbed [ab216772](#) and Goat anti-Rabbit IgG H&L (IRDye® 680RD) preabsorbed [ab216777](#) secondary antibodies at 1/20,000 dilution for 1 hour at room temperature before imaging.

kDa



Anti-Galectin 3 antibody [RM0082-5L36]  
(ab86058) + Lysates of mouse 4T1 cells

**Predicted band size:** 26 kDa

**Observed band size:** 28 kDa

Western blot - Anti-Galectin 3 antibody [RM0082-5L36] (ab86058)

**Please note:** All products are "FOR RESEARCH USE ONLY AND ARE NOT INTENDED FOR DIAGNOSTIC OR THERAPEUTIC USE"

### Our Abpromise to you: Quality guaranteed and expert technical support

- Replacement or refund for products not performing as stated on the datasheet
- Valid for 12 months from date of delivery
- Response to your inquiry within 24 hours
- We provide support in Chinese, English, French, German, Japanese and Spanish
- Extensive multi-media technical resources to help you
- We investigate all quality concerns to ensure our products perform to the highest standards

If the product does not perform as described on this datasheet, we will offer a refund or replacement. For full details of the Abpromise, please visit <https://www.abcam.com/abpromise> or contact our technical team.

### Terms and conditions

- Guarantee only valid for products bought direct from Abcam or one of our authorized distributors