

Product datasheet

Anti-Glycine Receptor alpha 1 + alpha 2 antibody ab23809

★★★★★ 2 Abreviews 10 References 2 Images

Overview

Product name	Anti-Glycine Receptor alpha 1 + alpha 2 antibody
Description	Rabbit polyclonal to Glycine Receptor alpha 1 + alpha 2
Host species	Rabbit
Specificity	This product recognises an epitope within the N-terminal region of glycine receptor alpha 1 and alpha 2 subunits.
Tested applications	Suitable for: IHC-Fr, WB, ICC/IF, IHC-FoFr
Species reactivity	Reacts with: Mouse, Rat, Human
Immunogen	Synthetic peptide (N-terminal) (Rat).
Positive control	Rat brain lysate, rat spinal cord lysate.
General notes	For long term storage the addition of 0.09% sodium azide is recommended.

Properties

Form	Liquid
Storage instructions	Shipped at 4°C. Upon delivery aliquot and store at -20°C. Avoid freeze / thaw cycles.
Storage buffer	Constituent: PBS
Purity	Protein A purified
Clonality	Polyclonal
Isotype	IgG

Applications

Our [Abpromise guarantee](#) covers the use of **ab23809** in the following tested applications.

The application notes include recommended starting dilutions; optimal dilutions/concentrations should be determined by the end user.

Application	Abreviews	Notes
IHC-Fr	★★★★★	1/1000.

Application	Abreviews	Notes
WB		1/1000. Detects a band of approximately 48 kDa.
ICC/IF	★★★★★	Use at an assay dependent concentration. Used at a dilution of 1/1000 for overnight incubation on rat cells (see Abreview submitted by Johana Trojanova).
IHC-FoFr		Use at an assay dependent concentration. PubMed: 21215254

Target

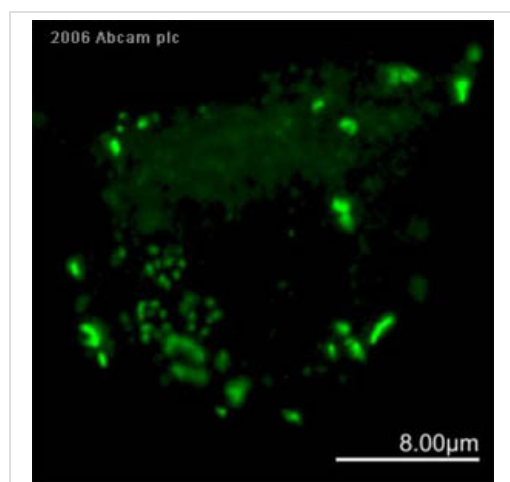
Relevance

Glycine receptors are members of the ligand-gated ion channel superfamily, which mediate fast inhibitory neurotransmission. The receptors are pentameric membrane proteins which form chloride channels. Binding of glycine to its receptor produces an increase in chloride conductance and membrane hyperpolarisation. Four genes encoding glycine receptor alpha subunits have been identified, together with a single beta polypeptide. Each subunit consists of a large extracellular N-terminal region, four transmembrane domains, and a large cytoplasmic domain.

Cellular localization

Cell Membrane

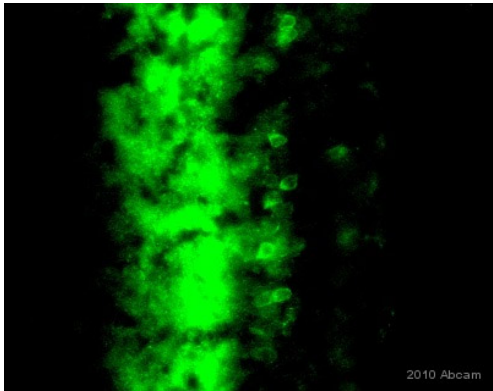
Images



ab23809 at a 1/1000 dilution staining rat brain stem cells (medial nucleus of trapezoid body) by ICC/IF. The cells were fixed with paraformaldehyde and incubated with the antibody for 18 hours. An Alexa Fluor® 488 donkey anti-rabbit antibody was used as the secondary.

Immunocytochemistry/ Immunofluorescence - Anti-Glycine Receptor alpha 1 + alpha 2 antibody (ab23809)

This image is courtesy of an Abreview submitted by Ms Johana Trojanova



Immunohistochemistry (Frozen sections) - Anti-Glycine Receptor alpha 1 + alpha 2 antibody (ab23809)

This image is courtesy of an Abreview submitted by Kevin Jin

ab23809 staining Glycine Receptor alpha1 + alpha 2 in Mouse retinal tissue sections by Immunohistochemistry (IHC-Fr - frozen sections). Tissue was fixed with paraformaldehyde and blocked with 5% serum for 1 hour at 20°C. Samples were incubated with primary antibody (1/400 in PBST) for 12 hours at 4°C. An Alexa Fluor®488-conjugated Donkey anti-rabbit polyclonal (1/1000) was used as the secondary antibody.

Please note: All products are "FOR RESEARCH USE ONLY AND ARE NOT INTENDED FOR DIAGNOSTIC OR THERAPEUTIC USE"

Our Abpromise to you: Quality guaranteed and expert technical support

- Replacement or refund for products not performing as stated on the datasheet
- Valid for 12 months from date of delivery
- Response to your inquiry within 24 hours
- We provide support in Chinese, English, French, German, Japanese and Spanish
- Extensive multi-media technical resources to help you
- We investigate all quality concerns to ensure our products perform to the highest standards

If the product does not perform as described on this datasheet, we will offer a refund or replacement. For full details of the Abpromise, please visit <https://www.abcam.com/abpromise> or contact our technical team.

Terms and conditions

- Guarantee only valid for products bought direct from Abcam or one of our authorized distributors