

Product datasheet

Goat Anti-Chicken IgY H&L (HRP) ab97135

★★★★☆ 1 Abreviews 11 References 3 Images

Overview

| | |
|----------------------------|--------------------------------------------------------------------------------------------------------------------------------------------------------------------------------------------------------------------------|
| Product name | Goat Anti-Chicken IgY H&L (HRP) |
| Host species | Goat |
| Target species | Chicken |
| Specificity | By immunoelectrophoresis and ELISA this antibody reacts specifically with Chicken IgY and with light chains common to other Chicken immunoglobulins. No antibody was detected against non immunoglobulin serum proteins. |
| Tested applications | Suitable for: ICC, IHC-P, ELISA, WB |
| Conjugation | HRP |

Properties

| | |
|-----------------------------|-----------------------------------------------------------------------------------------------------------------------------------------------|
| Form | Liquid |
| Storage instructions | Shipped at 4°C. Store at +4°C. |
| Storage buffer | Preservative: 0.05% Proclin Constituents: 0.2% BSA, PBS |
| Purity | Immunogen affinity purified |
| Purification notes | This antibody was isolated by affinity chromatography using antigen coupled to agarose beads and conjugated to Horse Radish Peroxidase (HRP). |
| Conjugation notes | Molar enzyme/ antibody protein ratio is 4:1 |
| Clonality | Polyclonal |
| Isotype | IgG |
| General notes | Part of the AbExcel range. |

Applications

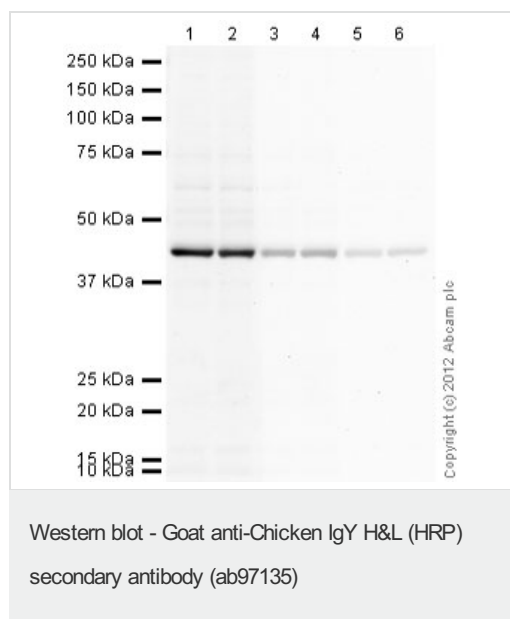
Our [Abpromise guarantee](#) covers the use of **ab97135** in the following tested applications.

The application notes include recommended starting dilutions; optimal dilutions/concentrations should be determined by the end user.

| Application | Abreviews | Notes |
|-------------|-----------|-------------------------------------|
| ICC | | Use at an assay dependent dilution. |

| Application | Abreviews | Notes |
|-------------|-----------|---------------------------------------------------------------------------------------|
| IHC-P | | 1/200 - 1/5000. |
| ELISA | | 1/10000 - 1/100000. (Primary). |
| WB | ★★★★☆ | 1/2000 - 1/20000. Colorimetric: 1/5000 - 1/30000; Chemiluminescent: 1/10000 - 1/50000 |

Images



All lanes : Anti-beta Actin antibody - Loading Control ([ab13822](#)) at 1 µg/ml

Lanes 1-6 : HeLa (Human epithelial carcinoma cell line) Whole Cell Lysate Lysates/proteins at 10 µg per lane.

Secondary

Lanes 1 - 2 : Goat polyclonal Secondary Antibody to Chicken IgY - H&L (HRP) (ab97135) at 1/2000 dilution

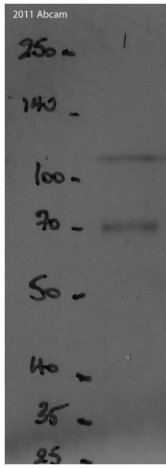
Lanes 3 - 4 : Goat polyclonal Secondary Antibody to Chicken IgY - H&L (HRP) (ab97135) at 1/10000 dilution

Lanes 5 - 6 : Goat polyclonal Secondary Antibody to Chicken IgY - H&L (HRP) (ab97135) at 1/20000 dilution

Developed using the ECL technique.

Performed under reducing conditions.

Exposure time : 90 seconds



Western blot - Goat polyclonal Secondary Antibody to Chicken IgY - H&L (HRP) (ab97135)

Ab97135 used to detect a chicken anti-beta Galactosidase antibody ([ab9361](#)). Ab97135 used at a concentration of 1:2000 in 5% milk blocking buffer in 0.1% Tween, 1x PBS. Whole lysates from DH5a (E.coli). Specific band at approx. 110 KDa. Non-specific bands: 70 Kda. NB. Gels run on 10% Acrylamide gels.

This image is courtesy of an anonymous Abreview

Please note: All products are "FOR RESEARCH USE ONLY AND ARE NOT INTENDED FOR DIAGNOSTIC OR THERAPEUTIC USE"

Our Abpromise to you: Quality guaranteed and expert technical support

- Replacement or refund for products not performing as stated on the datasheet
- Valid for 12 months from date of delivery
- Response to your inquiry within 24 hours
- We provide support in Chinese, English, French, German, Japanese and Spanish
- Extensive multi-media technical resources to help you
- We investigate all quality concerns to ensure our products perform to the highest standards

If the product does not perform as described on this datasheet, we will offer a refund or replacement. For full details of the Abpromise, please visit <https://www.abcam.com/abpromise> or contact our technical team.

Terms and conditions

- Guarantee only valid for products bought direct from Abcam or one of our authorized distributors