

Product datasheet

Goat Anti-Rat IgG H&L (Alkaline Phosphatase) ab6846

1 References 1 Image

Overview

<b>Product name</b>	Goat Anti-Rat IgG H&L (Alkaline Phosphatase)
<b>Host species</b>	Goat
<b>Target species</b>	Rat
<b>Tested applications</b>	<b>Suitable for:</b> WB, ELISA, Immunomicroscopy, Dot blot, ICC/IF, IHC-P, IHC-Fr
<b>Immunogen</b>	Rat IgG whole molecule
<b>Conjugation</b>	Alkaline Phosphatase

Properties

<b>Form</b>	Liquid
<b>Storage instructions</b>	Shipped at 4°C. Store at +4°C.
<b>Storage buffer</b>	pH: 8 Preservative: 0.1% Sodium azide Constituents: 0.878% Sodium chloride, 1% BSA, 0.788% Tris HCl, 0.0095% Magnesium chloride, 0.014% Zinc chloride, 50% Glycerol
<b>Purity</b>	Affinity purified
<b>Purification notes</b>	This product was prepared from monospecific antiserum by immunoaffinity chromatography using Rat IgG coupled to agarose beads.
<b>Conjugation notes</b>	Alkaline Phosphatase (Calf Intestine) (Molecular Weight 140,000 daltons)
<b>Clonality</b>	Polyclonal
<b>Isotype</b>	IgG
<b>General notes</b>	Part of the <b>AbExcel</b> range.

Applications

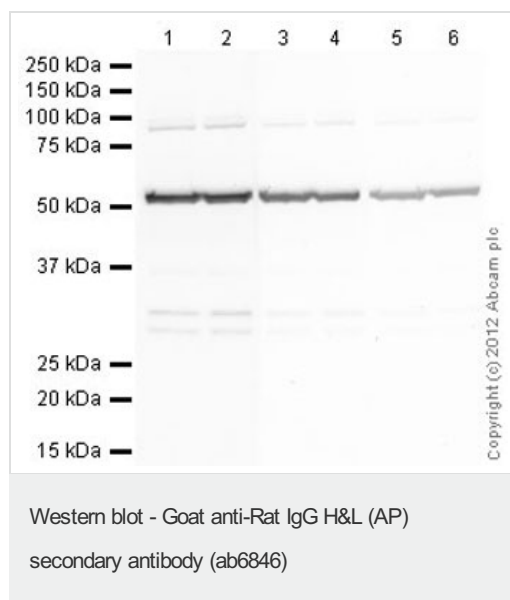
Our [Abpromise guarantee](#) covers the use of **ab6846** in the following tested applications.

The application notes include recommended starting dilutions; optimal dilutions/concentrations should be determined by the end user.

Application	Abreviews	Notes
WB		1/2000 - 1/20000.

Application	Abreviews	Notes
ELISA		1/15000.
Immunomicroscopy		Use at an assay dependent concentration.
Dot blot		Use at an assay dependent concentration.
ICC/IF		1/200 - 1/1000.
IHC-P		Use at an assay dependent concentration.
IHC-Fr		Use at an assay dependent concentration.

## Images



**All lanes :** Anti-Tubulin antibody [YL1/2] - Loading Control ([ab6160](#)) at 1 µg/ml + HeLa (Human epithelial carcinoma cell line) Whole Cell Lysate at 20 µg per lane.

### Secondary

**Lanes 1 - 2 :** Goat polyclonal Secondary Antibody to Rat IgG - H&L (AP) ([ab6846](#)) at 1/5000 dilution

**Lanes 3 - 4 :** Goat polyclonal Secondary Antibody to Rat IgG - H&L (AP) ([ab6846](#)) at 1/20000 dilution

**Lanes 5 - 6 :** Goat polyclonal Secondary Antibody to Rat IgG - H&L (AP) ([ab6846](#)) at 1/50000 dilution

Developed using the ECL technique  
Performed under reducing conditions.

**Predicted band size :** 50 kDa

**Observed band size :** 52 kDa

**Additional bands at :** 85 kDa. We are unsure as to the identity of these extra bands.

**Exposure time :** 8 minutes

Abcam recommends blocking with 3% milk to reproduce this western blot data.

### **Our Abpromise to you: Quality guaranteed and expert technical support**

---

- Replacement or refund for products not performing as stated on the datasheet
- Valid for 12 months from date of delivery
- Response to your inquiry within 24 hours
  
- We provide support in Chinese, English, French, German, Japanese and Spanish
- Extensive multi-media technical resources to help you
- We investigate all quality concerns to ensure our products perform to the highest standards

If the product does not perform as described on this datasheet, we will offer a refund or replacement. For full details of the Abpromise, please visit <https://www.abcam.com/abpromise> or contact our technical team.

### **Terms and conditions**

---

- Guarantee only valid for products bought direct from Abcam or one of our authorized distributors