


Product datasheet

Anti-HCE antibody ab96373

1 Image

Overview

Product name	Anti-HCE antibody
Description	Rabbit polyclonal to HCE
Host species	Rabbit
Tested applications	Suitable for: WB
Species reactivity	Reacts with: Human Predicted to work with: Mouse, Rat, Cow 
Immunogen	Recombinant protein fragment containing a sequence corresponding to a region within amino acids 40 - 256 of Human HCE
Positive control	HeLa, HepG2 and MOLT4 whole cell lysates

Properties

Form	Liquid
Storage instructions	Shipped at 4°C. Upon delivery aliquot and store at -20°C or -80°C. Avoid repeated freeze / thaw cycles.
Storage buffer	Preservative: 0.01% Thimerosal (merthiolate) Constituents: 10% Glycerol, 0.1M Tris, 0.1M Glycine, pH 7.0
Purity	Immunogen affinity purified
Clonality	Polyclonal
Isotype	IgG

Applications

Our [Abpromise guarantee](#) covers the use of **ab96373** in the following tested applications.

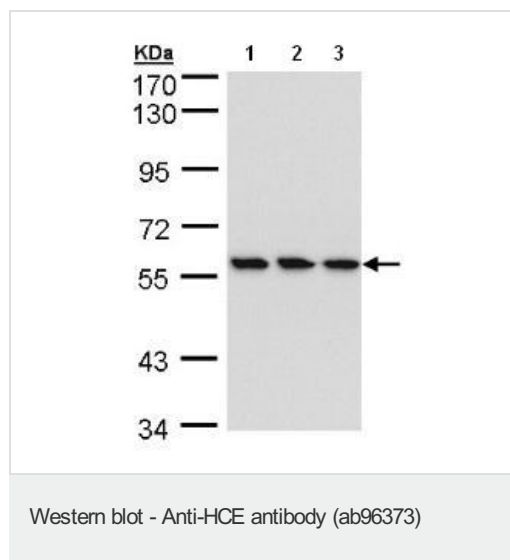
The application notes include recommended starting dilutions; optimal dilutions/concentrations should be determined by the end user.

Application	Abreviews	Notes
WB		1/500 - 1/3000. Predicted molecular weight: 69 kDa.

Target

Function	Bifunctional mRNA-capping enzyme exhibiting RNA 5'-triphosphatase activity in the N-terminal part and mRNA guanylyltransferase activity in the C-terminal part. Catalyzes the first two steps of cap formation: by removing the gamma-phosphate from the 5'-triphosphate end of nascent mRNA to yield a diphosphate end, and by transferring the gmp moiety of GTP to the 5'-diphosphate terminus.
Tissue specificity	Isoform 1 and isoform 4 (at a lesser extent) are expressed in cerebrum, cerebellum, thyroid, lung, heart, liver, kidney, spleen, large intestine, testis, skin and muscle.
Sequence similarities	In the N-terminal section; belongs to the non-receptor class of the protein-tyrosine phosphatase family. In the C-terminal section; belongs to the eukaryotic GTase family.
Cellular localization	Nucleus.

Images



All lanes : Anti-HCE antibody (ab96373) at

1/1000 dilution

Lane 1 : HeLa whole cell lysate

Lane 2 : HepG2 whole cell lysate

Lane 3 : MOLT4 whole cell lysate

Lysates/proteins at 30 µg per lane.

Predicted band size: 69 kDa

7.5% SDS PAGE

Please note: All products are "FOR RESEARCH USE ONLY AND ARE NOT INTENDED FOR DIAGNOSTIC OR THERAPEUTIC USE"

Our Abpromise to you: Quality guaranteed and expert technical support

- Replacement or refund for products not performing as stated on the datasheet
- Valid for 12 months from date of delivery
- Response to your inquiry within 24 hours
- We provide support in Chinese, English, French, German, Japanese and Spanish
- Extensive multi-media technical resources to help you
- We investigate all quality concerns to ensure our products perform to the highest standards

If the product does not perform as described on this datasheet, we will offer a refund or replacement. For full details of the Abpromise, please visit <https://www.abcam.com/abpromise> or contact our technical team.

Terms and conditions

- Guarantee only valid for products bought direct from Abcam or one of our authorized distributors