


Product datasheet

Anti-HIP55 antibody ab118794

1 Image

Overview

Product name	Anti-HIP55 antibody
Description	Rabbit polyclonal to HIP55
Host species	Rabbit
Tested applications	Suitable for: IP Unsuitable for: WB
Species reactivity	Reacts with: Human Predicted to work with: Chimpanzee, Gorilla 
Immunogen	Synthetic peptide corresponding to a region within amino acids 275-325 of Human HIP55 (NP_001014436.1).
Positive control	HeLa whole cell lysate

Properties

Form	Liquid
Storage instructions	Shipped at 4°C. Upon delivery aliquot and store at -20°C. Avoid freeze / thaw cycles.
Storage buffer	Preservative: 0.09% Sodium azide Constituent: 99% Tris citrate/phosphate Note: pH 7 to 8
Purity	Immunogen affinity purified
Clonality	Polyclonal
Isotype	IgG

Applications

Our [Abpromise guarantee](#) covers the use of **ab118794** in the following tested applications.

The application notes include recommended starting dilutions; optimal dilutions/concentrations should be determined by the end user.

Application	Abreviews	Notes
IP		Use at 2-10 µg/mg of lysate.

Application notes

Is unsuitable for WB.

Target

Function

Actin-binding adapter protein. May act as a common effector of antigen receptor-signaling pathways in leukocytes. Its association with dynamin suggests that it may also connect the actin cytoskeleton to endocytic function. Acts as a key component of the immunological synapse that regulates T-cell activation by bridging TCRs and the actin cytoskeleton to gene activation and endocytic processes. Binds to F-actin but is not involved in actin polymerization, capping or bundling. Does not bind G-actin.

Sequence similarities

Belongs to the ABP1 family.

Contains 1 ADF-H domain.

Contains 1 SH3 domain.

Domain

The SH3 domain mediates interaction with SHANK2, SHANK3 and PRAM1.

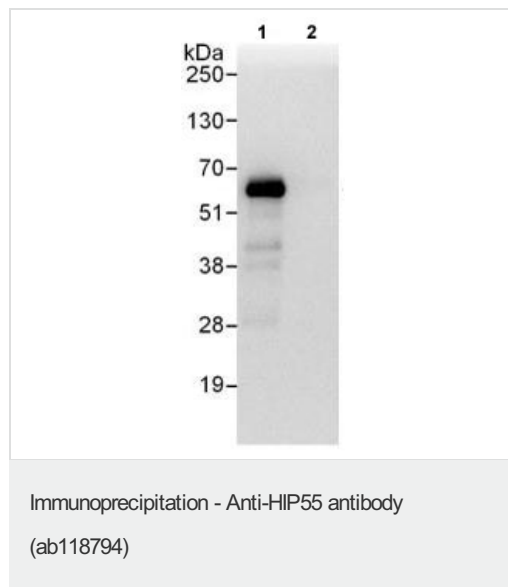
Post-translational modifications

Degraded by caspases during apoptosis.

Cellular localization

Cytoplasm > cytoskeleton. Cell projection > lamellipodium. Cortical cytoskeleton. Associates with lamellipodial actin.

Images



Detection of HIP55 in Immunoprecipitates of HeLa whole cell lysates (1 mg for IP, 20% of IP loaded) using ab118794 at 6 µg/mg lysate for IP. For WB detection an anti-HIP55 antibody which recognizes an upstream epitope was used at 1 µg/ml.

Detection: Chemiluminescence with an exposure time of 1 second.

Please note: All products are "FOR RESEARCH USE ONLY AND ARE NOT INTENDED FOR DIAGNOSTIC OR THERAPEUTIC USE"

Our Abpromise to you: Quality guaranteed and expert technical support

- Replacement or refund for products not performing as stated on the datasheet
- Valid for 12 months from date of delivery
- Response to your inquiry within 24 hours
- We provide support in Chinese, English, French, German, Japanese and Spanish

- Extensive multi-media technical resources to help you
- We investigate all quality concerns to ensure our products perform to the highest standards

If the product does not perform as described on this datasheet, we will offer a refund or replacement. For full details of the Abpromise, please visit <https://www.abcam.com/abpromise> or contact our technical team.

Terms and conditions

- Guarantee only valid for products bought direct from Abcam or one of our authorized distributors