

Product datasheet

Anti-HLA B7 antibody [EPR2623(2)] ab109089

Recombinant RabMAb

2 Images

Overview

<b>Product name</b>	Anti-HLA B7 antibody [EPR2623(2)]
<b>Description</b>	Rabbit monoclonal [EPR2623(2)] to HLA B7
<b>Host species</b>	Rabbit
<b>Tested applications</b>	<b>Suitable for:</b> WB, IHC-P <b>Unsuitable for:</b> Flow Cyt, ICC or IP
<b>Species reactivity</b>	<b>Reacts with:</b> Human
<b>Immunogen</b>	A synthetic peptide corresponding to residues in the extracellular domain of Human HLA B7.
<b>Positive control</b>	Jurkat, HL60, TF1, and Ramos cell lysates; Human tonsil tissue.
<b>General notes</b>	Mouse, Rat: We have preliminary internal testing data to indicate this antibody may not react with these species. Please contact us for more information.

Our RabMAb<sup>®</sup> technology is a patented hybridoma-based technology for making rabbit monoclonal antibodies. For details on our patents, please refer to [RabMab<sup>®</sup> patents](#)

**We are constantly working hard to ensure we provide our customers with best in class antibodies. As a result of this work we are pleased to now offer this antibody in purified format. We are in the process of updating our datasheets. The purified format is designated 'PUR' on our product labels. If you have any questions regarding this update, please contact our Scientific Support team.**

This product is a recombinant rabbit monoclonal antibody.

Properties

<b>Form</b>	Liquid
<b>Storage instructions</b>	Shipped at 4°C. Store at -20°C. Stable for 12 months at -20°C.
<b>Storage buffer</b>	pH: 7.20 Preservative: 0.05% Sodium azide Constituents: 0.1% BSA, 40% Glycerol, 9.85% Tris glycine, 50% PBS
<b>Purity</b>	Protein A purified
<b>Clonality</b>	Monoclonal

Clone number EPR2623(2)

Isotype IgG

## Applications

Our [Abpromise guarantee](#) covers the use of **ab109089** in the following tested applications.

The application notes include recommended starting dilutions; optimal dilutions/concentrations should be determined by the end user.

Application	Abreviews	Notes
WB		1/1000 - 1/10000. Predicted molecular weight: 40 kDa.
IHC-P		1/250 - 1/500. Antigen retrieval is recommended.

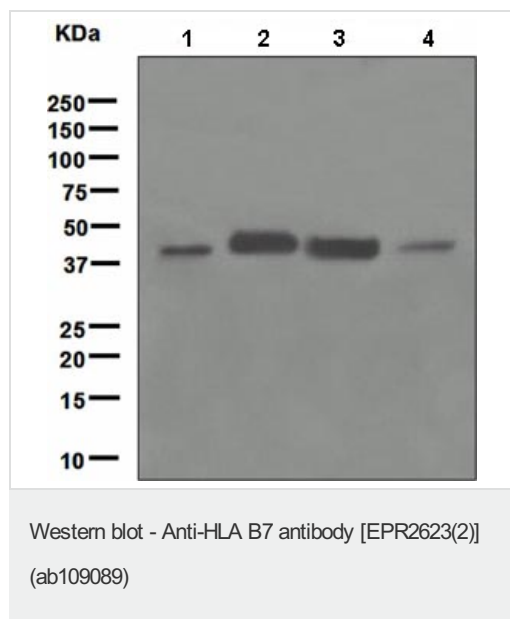
**Application notes** Is unsuitable for Flow Cyt, ICC or IP.

## Target

**Relevance** HLA B belongs to the HLA class I heavy chain paralogues. This class I molecule is a heterodimer consisting of a heavy chain and a light chain (beta 2 microglobulin). The heavy chain is anchored in the membrane. Class I molecules play a central role in the immune system by presenting peptides derived from the endoplasmic reticulum lumen. They are expressed in nearly all cells. The heavy chain is approximately 45 kDa. Hundreds of HLA B alleles have been described.

**Cellular localization** Cell Membrane, single pass type I membrane protein.

## Images



**All lanes :** Anti-HLA B7 antibody [EPR2623(2)] (ab109089) at 1/1000 dilution

**Lane 1 :** Jurkat Ramos cell lysate

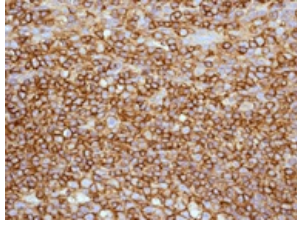
**Lane 2 :** HL60 cell lysate

**Lane 3 :** TF1 cell lysate

**Lane 4 :** Ramos cell lysate

Lysates/proteins at 10 µg per lane.

**Predicted band size:** 40 kDa



ab109089 at 1/250 dilution staining HLA B7 in Human tonsil by Immunohistochemistry, Paraffin-embedded tissue.

Immunohistochemistry (Formalin/PFA-fixed paraffin-embedded sections) - Anti-HLA B7 antibody [EPR2623(2)] (ab109089)

**Please note:** All products are "FOR RESEARCH USE ONLY AND ARE NOT INTENDED FOR DIAGNOSTIC OR THERAPEUTIC USE"

### **Our Abpromise to you: Quality guaranteed and expert technical support**

- Replacement or refund for products not performing as stated on the datasheet
- Valid for 12 months from date of delivery
- Response to your inquiry within 24 hours
- We provide support in Chinese, English, French, German, Japanese and Spanish
- Extensive multi-media technical resources to help you
- We investigate all quality concerns to ensure our products perform to the highest standards

If the product does not perform as described on this datasheet, we will offer a refund or replacement. For full details of the Abpromise, please visit <https://www.abcam.com/abpromise> or contact our technical team.

### **Terms and conditions**

- Guarantee only valid for products bought direct from Abcam or one of our authorized distributors