

## Product datasheet

# Anti-Histone H1 (phospho ) antibody ab4270

★★★★☆ 1 Abreviews 5 References 2 Images

### Overview

<b>Product name</b>	Anti-Histone H1 (phospho ) antibody
<b>Description</b>	Rabbit polyclonal to Histone H1 (phospho )
<b>Host species</b>	Rabbit
<b>Specificity</b>	Recognizes phosphorylated histone H1
<b>Tested applications</b>	<b>Suitable for:</b> Flow Cyt, WB, ICC
<b>Species reactivity</b>	<b>Reacts with:</b> Mouse, Human
<b>Immunogen</b>	Hyper-phosphorylated isoform of tetrahymena Histone H1

### Properties

<b>Form</b>	Liquid
<b>Storage instructions</b>	Shipped at 4°C. Store at +4°C short term (1-2 weeks). Upon delivery aliquot. Store at -20°C or -80°C. Avoid freeze / thaw cycle.
<b>Storage buffer</b>	pH: 7.40 Preservative: 0.035% Sodium azide Constituents: 1.3% Tris glycine, 30% Glycerol, 0.667% Sodium chloride
<b>Purity</b>	Protein A purified
<b>Clonality</b>	Polyclonal
<b>Isotype</b>	IgG

### Applications

Our [Abpromise guarantee](#) covers the use of **ab4270** in the following tested applications.

The application notes include recommended starting dilutions; optimal dilutions/concentrations should be determined by the end user.

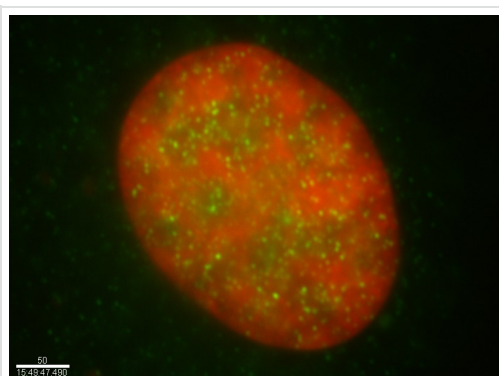
Application	Abreviews	Notes
Flow Cyt		Use at an assay dependent concentration. <a href="#">ab171870</a> - Rabbit polyclonal IgG, is suitable for use as an isotype control with this antibody.

Application	Abreviews	Notes
WB	★★★★☆	Use a concentration of 1 - 2 µg/ml. Detects a band of approximately 32 kDa. Additional proteins at 66 kD and 100 kD were detected. It detected Histone H1 from acid extracts of colcemid treated HeLa cells but not untreated HeLa cells. Acid extracts from colcemid treated and untreated HeLa cell were resolved by electrophoresis, transferred to nitrocellulose and probed with anti-phospho- Histone H1 (2 µg/ml).
ICC		Use a concentration of 5 - 10 µg/ml.

## Target

<b>Function</b>	Histones H1 are necessary for the condensation of nucleosome chains into higher order structures.
<b>Sequence similarities</b>	Belongs to the histone H1/H5 family. Contains 1 H15 (linker histone H1/H5 globular) domain.
<b>Post-translational modifications</b>	Acetylated at Lys-26. Deacetylated at Lys-26 by SIRT1.
<b>Cellular localization</b>	Nucleus. Chromosome.

## Images

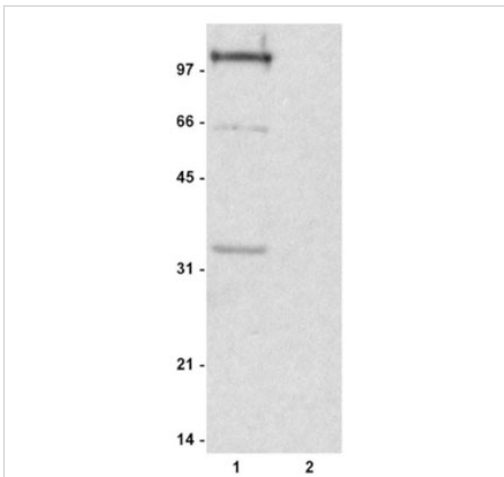


Rabbit polyclonal to Histone H1 (phospho) (1/100).

Human neuroblastoma cell line SK-N-SH cultured on coverslips were fixed in 4% paraformaldehyde and then stained with ab4270 (green). The DNA stained with DAPI is shown in red. (100x magnification).

Immunocytochemistry/ Immunofluorescence - Anti-Histone H1 (phospho ) antibody (ab4270)

This image is courtesy of Dr Michael Hendzels Laboratory



Western blot - Anti-Histone H1 (phospho ) antibody (ab4270)

**All lanes :** Anti-Histone H1 (phospho ) antibody (ab4270) at 2 µg/ml

**Lane 1 :** Colcemid treated HeLa cell lysate

**Lane 2 :** Untreated HeLa cell lysate

**Secondary**

**Lane 1 :** Goat anti-rabbit secondary antibody labeled with HRP

**Lane 2 :** Goat anti-rabbit secondary antibody labeled with HRP.

Developed using the ECL technique.

**Please note:** All products are "FOR RESEARCH USE ONLY AND ARE NOT INTENDED FOR DIAGNOSTIC OR THERAPEUTIC USE"

**Our Abpromise to you: Quality guaranteed and expert technical support**

- Replacement or refund for products not performing as stated on the datasheet
- Valid for 12 months from date of delivery
- Response to your inquiry within 24 hours
- We provide support in Chinese, English, French, German, Japanese and Spanish
- Extensive multi-media technical resources to help you
- We investigate all quality concerns to ensure our products perform to the highest standards

If the product does not perform as described on this datasheet, we will offer a refund or replacement. For full details of the Abpromise, please visit <https://www.abcam.com/abpromise> or contact our technical team.

**Terms and conditions**

- Guarantee only valid for products bought direct from Abcam or one of our authorized distributors