

Product datasheet

Human CXCL7 ELISA Kit ab100613

[1 References](#) [3 Images](#)

Overview

Product name	Human CXCL7 ELISA Kit
Detection method	Colorimetric
Sample type	Cell culture supernatant, Serum, Plasma, Cell Lysate
Assay type	Sandwich (quantitative)
Sensitivity	< 8.5 pg/ml
Range	4.1 pg/ml - 1000 pg/ml
Recovery	93 %

Sample specific recovery

Sample type	Average %	Range
Cell culture supernatant	95.28	84% - 103%
Serum	92.76	82% - 102%
Plasma	93.45	83% - 103%

Assay duration Multiple steps standard assay

Species reactivity **Reacts with:** Human

Product overview Abcam's CXCL7 Human ELISA (Enzyme-Linked Immunosorbent Assay) kit is an *in vitro* enzyme-linked immunosorbent assay for the quantitative measurement of Human CXCL7 in serum, plasma, and cell culture supernatants.

This assay employs an antibody specific for Human CXCL7 coated on a 96-well plate. Standards and samples are pipetted into the wells and CXCL7 present in a sample is bound to the wells by the immobilized antibody. The wells are washed and biotinylated anti-Human CXCL7 antibody is added. After washing away unbound biotinylated antibody, HRP-conjugated streptavidin is pipetted to the wells. The wells are again washed, a TMB substrate solution is added to the wells and color develops in proportion to the amount of CXCL7 bound. The Stop Solution changes the color from blue to yellow, and the intensity of the color is measured at 450 nm.

Notes Optimization may be required with urine samples.

Tested applications **Suitable for:** Sandwich ELISA

Platform Microplate

Properties

Storage instructions Store at -20°C. Please refer to protocols.

Components	1 x 96 tests
200X HRP-Streptavidin Concentrate	1 x 200µl
20X Wash Buffer Concentrate	1 x 25ml
5X Assay Diluent B	1 x 15ml
Assay Diluent A	1 x 30ml
Biotinylated anti-Human CXCL7 (lyophilized)	2 vials
CXCL7 Microplate (12 x 8 wells)	1 unit
Recombinant Human CXCL7 Standard (lyophilized)	2 vials
Stop Solution	1 x 8ml
TMB One-Step Substrate Reagent	1 x 12ml

Relevance

CXCL7 is a platelet-derived growth factor that belongs to the CXC chemokine family. It is a potent chemoattractant and activator of neutrophils and has been shown to stimulate various cellular processes including DNA synthesis, mitosis, glycolysis, intracellular cAMP accumulation, prostaglandin E2 secretion, and synthesis of hyaluronic acid and sulfated glycosaminoglycan. It also stimulates the formation and secretion of plasminogen activator by synovial cells.

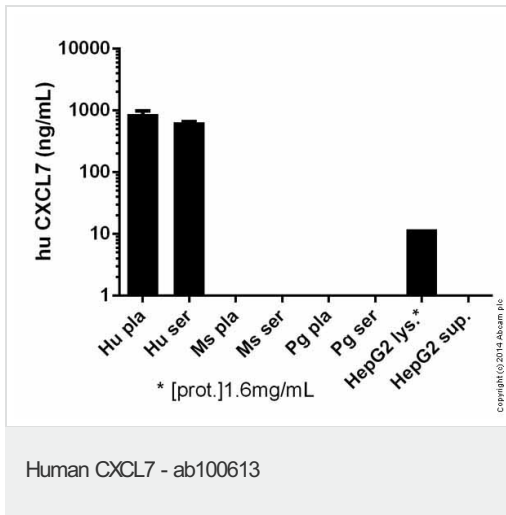
Applications

Our [Abpromise guarantee](#) covers the use of **ab100613** in the following tested applications.

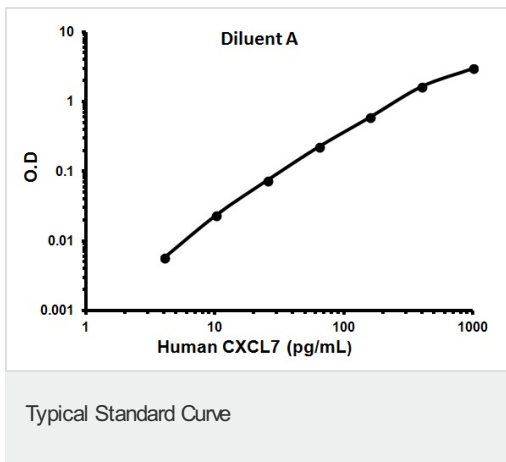
The application notes include recommended starting dilutions; optimal dilutions/concentrations should be determined by the end user.

Application	Abreviews	Notes
Sandwich ELISA		Use at an assay dependent concentration.

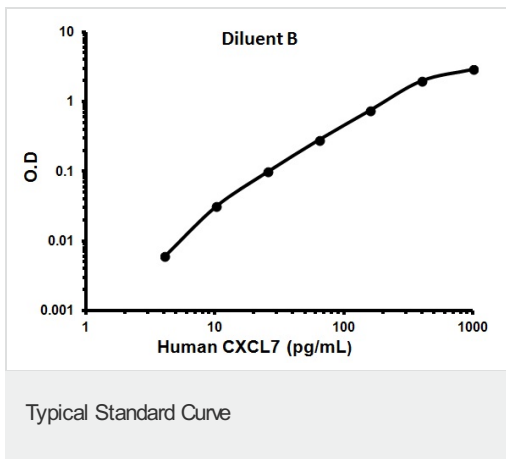
Images



CXCL7 measured in biological fluids showing quantity (ng) per mL of tested sample



Representative Standard Curve using ab100613.



Representative Standard Curve using ab100613.

Please note: All products are "FOR RESEARCH USE ONLY AND ARE NOT INTENDED FOR DIAGNOSTIC OR THERAPEUTIC USE"

Our Abpromise to you: Quality guaranteed and expert technical support

- Replacement or refund for products not performing as stated on the datasheet
- Valid for 12 months from date of delivery
- Response to your inquiry within 24 hours

- We provide support in Chinese, English, French, German, Japanese and Spanish
- Extensive multi-media technical resources to help you
- We investigate all quality concerns to ensure our products perform to the highest standards

If the product does not perform as described on this datasheet, we will offer a refund or replacement. For full details of the Abpromise, please visit <https://www.abcam.com/abpromise> or contact our technical team.

Terms and conditions

- Guarantee only valid for products bought direct from Abcam or one of our authorized distributors