

## Product datasheet

# Human VEGF ELISA Kit ab100663

[8 References](#) [3 Images](#)

### Overview

<b>Product name</b>	Human VEGF ELISA Kit
<b>Detection method</b>	Colorimetric
<b>Sample type</b>	Cell culture extracts, Tissue Extracts
<b>Assay type</b>	Sandwich (quantitative)
<b>Sensitivity</b>	< 10 pg/ml
<b>Range</b>	8.23 pg/ml - 6000 pg/ml
<b>Recovery</b>	96 %

Sample specific recovery

Sample type	Average %	Range
Cell culture extracts	96.79	90% - 107%
Tissue Extracts	95.58	89% - 106%

**Assay duration** Multiple steps standard assay

**Species reactivity** **Reacts with:** Human

**Product overview** Abcam's VEGF Human ELISA (Enzyme-Linked Immunosorbent Assay) kit is an *in vitro* enzyme-linked immunosorbent assay for the quantitative measurement of Human VEGF in cell lysates and tissue lysates.

This assay employs an antibody specific for Human VEGF coated on a 96-well plate. Standards and samples are pipetted into the wells and VEGF present in a sample is bound to the wells by the immobilized antibody. The wells are washed and biotinylated anti-Human VEGF antibody is added. After washing away unbound biotinylated antibody, HRP conjugated streptavidin is pipetted to the wells. The wells are again washed, a TMB substrate solution is added to the wells and color develops in proportion to the amount of VEGF bound. The Stop Solution changes the color from blue to yellow, and the intensity of the color is measured at 450 nm.

**Tested applications** **Suitable for:** Sandwich ELISA

**Platform** Microplate

### Properties

**Storage instructions**

Store at -20°C. Please refer to protocols.

Components	1 x 96 tests
20X Wash Buffer Concentrate	1 x 25ml
2X Cell Lysate Buffer	1 x 5ml
300X HRP-Streptavidin Concentrate	1 x 200µl
5X Assay Diluent	1 x 15ml
5X Sample Diluent Buffer	1 x 10ml
Biotinylated anti-Human VEGF	2 vials
Recombinant Human VEGF Standard (lyophilized)	2 vials
Stop Solution	1 x 8ml
TMB One-Step Substrate Reagent	1 x 12ml
VEGF Microplate (12 x 8 wells)	1 unit

**Function**

Growth factor active in angiogenesis, vasculogenesis and endothelial cell growth. Induces endothelial cell proliferation, promotes cell migration, inhibits apoptosis and induces permeabilization of blood vessels. Binds to the FLT1/VEGFR1 and KDR/VEGFR2 receptors, heparan sulfate and heparin. NRP1/Neuropilin-1 binds isoforms VEGF-165 and VEGF-145. Isoform VEGF165B binds to KDR but does not activate downstream signaling pathways, does not activate angiogenesis and inhibits tumor growth.

**Tissue specificity**

Isoform VEGF189, isoform VEGF165 and isoform VEGF121 are widely expressed. Isoform VEGF206 and isoform VEGF145 are not widely expressed.

**Involvement in disease**

Defects in VEGFA are a cause of susceptibility to microvascular complications of diabetes type 1 (MVCD1) [MIM:603933]. These are pathological conditions that develop in numerous tissues and organs as a consequence of diabetes mellitus. They include diabetic retinopathy, diabetic nephropathy leading to end-stage renal disease, and diabetic neuropathy. Diabetic retinopathy remains the major cause of new-onset blindness among diabetic adults. It is characterized by vascular permeability and increased tissue ischemia and angiogenesis.

**Sequence similarities**

Belongs to the PDGF/VEGF growth factor family.

**Cellular localization**

Secreted. VEGF121 is acidic and freely secreted. VEGF165 is more basic, has heparin-binding properties and, although a significant proportion remains cell-associated, most is freely secreted. VEGF189 is very basic, it is cell-associated after secretion and is bound avidly by heparin and the extracellular matrix, although it may be released as a soluble form by heparin, heparinase or plasmin.

**Applications**

Our [Abpromise guarantee](#) covers the use of **ab100663** in the following tested applications.

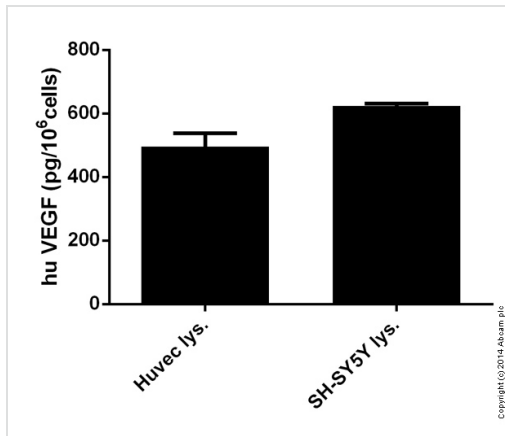
The application notes include recommended starting dilutions; optimal dilutions/concentrations should be determined by the end user.

Application	Abreviews	Notes
-------------	-----------	-------

Sandwich ELISA

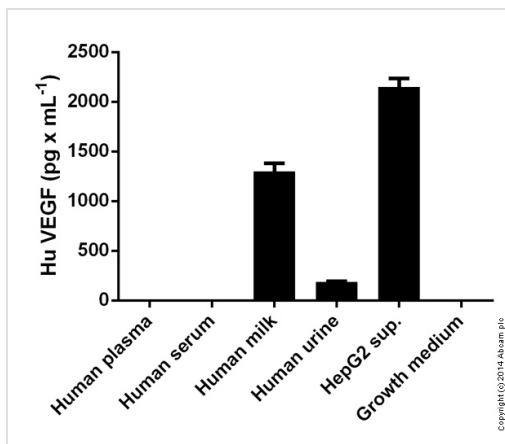
Use at an assay dependent concentration.

### Images



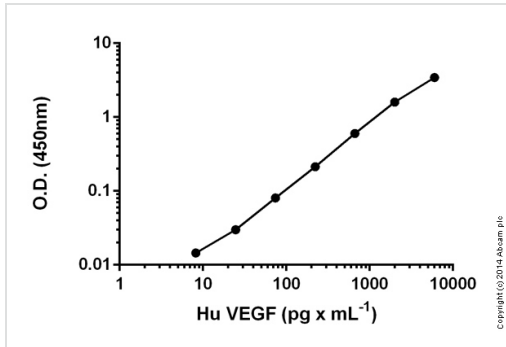
Hu VEGF measured in cell lysates showing quantity (pg) per million cells tested

Sandwich ELISA - ab100663 VEGF Human ELISA Kit



Hu VEGF in various fluids showing quantity (pg) per mL of tested sample

Sandwich ELISA - ab100663 VEGF Human ELISA Kit



Standard curve : mean of duplicates (+/-SD)  
with background readings subtracted

Sandwich ELISA - ab100663 VEGF Human ELISA  
Kit

**Please note:** All products are "FOR RESEARCH USE ONLY AND ARE NOT INTENDED FOR DIAGNOSTIC OR THERAPEUTIC USE"

### Our Abpromise to you: Quality guaranteed and expert technical support

- Replacement or refund for products not performing as stated on the datasheet
- Valid for 12 months from date of delivery
- Response to your inquiry within 24 hours
- We provide support in Chinese, English, French, German, Japanese and Spanish
- Extensive multi-media technical resources to help you
- We investigate all quality concerns to ensure our products perform to the highest standards

If the product does not perform as described on this datasheet, we will offer a refund or replacement. For full details of the Abpromise, please visit <https://www.abcam.com/abpromise> or contact our technical team.

### Terms and conditions

- Guarantee only valid for products bought direct from Abcam or one of our authorized distributors