

Product datasheet

Anti-IL1 alpha antibody ab92396

1 Image

Overview

Product name	Anti-IL1 alpha antibody
Description	Rabbit polyclonal to IL1 alpha
Host species	Rabbit
Tested applications	Suitable for: WB, ELISA
Species reactivity	Reacts with: Human
Immunogen	Generated from rabbits immunized with a KLH conjugated synthetic peptide selected from the amino acid residues surrounding S87 of Human IL1 alpha.
Positive control	Transiently transfected 293 cell lysates

Properties

Form	Liquid
Storage instructions	Shipped at 4°C. Upon delivery aliquot and store at -20°C. Avoid freeze / thaw cycles.
Storage buffer	Preservative: 0.09% Sodium Azide Constituents: PBS
Purity	Immunogen affinity purified
Purification notes	Purified through a protein A column, followed by peptide affinity purification.
Clonality	Polyclonal
Isotype	IgG

Applications

Our [Abpromise guarantee](#) covers the use of **ab92396** in the following tested applications.

The application notes include recommended starting dilutions; optimal dilutions/concentrations should be determined by the end user.

Application	Abreviews	Notes
WB		
ELISA		

Application notes

ELISA: 1/1000.

WB: 1/100 - 1/500. Predicted molecular weight: 31 kDa.

Not yet tested in other applications.

Optimal dilutions/concentrations should be determined by the end user.

Target

Function

Produced by activated macrophages, IL-1 stimulates thymocyte proliferation by inducing IL-2 release, B-cell maturation and proliferation, and fibroblast growth factor activity. IL-1 proteins are involved in the inflammatory response, being identified as endogenous pyrogens, and are reported to stimulate the release of prostaglandin and collagenase from synovial cells.

Sequence similarities

Belongs to the IL-1 family.

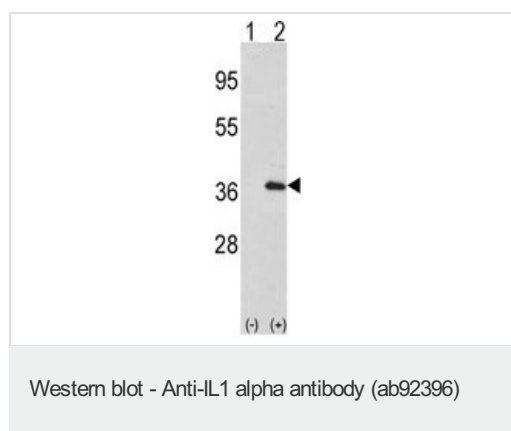
Domain

The similarity among the IL-1 precursors suggests that the amino ends of these proteins serve some as yet undefined function.

Cellular localization

Secreted. The lack of a specific hydrophobic segment in the precursor sequence suggests that IL-1 is released by damaged cells or is secreted by a mechanism differing from that used for other secretory proteins.

Images



All lanes : Anti-IL1 alpha antibody (ab92396)
at 1/100 dilution

Lane 1 : Non-transfected 293 cell lysate

Lane 2 : IL1 alpha transfected 293 cell lysate

Lysates/proteins at 2 µg per lane.

Predicted band size: 31 kDa

Please note: All products are "FOR RESEARCH USE ONLY AND ARE NOT INTENDED FOR DIAGNOSTIC OR THERAPEUTIC USE"

Our Abpromise to you: Quality guaranteed and expert technical support

- Replacement or refund for products not performing as stated on the datasheet
- Valid for 12 months from date of delivery
- Response to your inquiry within 24 hours
- We provide support in Chinese, English, French, German, Japanese and Spanish
- Extensive multi-media technical resources to help you
- We investigate all quality concerns to ensure our products perform to the highest standards

If the product does not perform as described on this datasheet, we will offer a refund or replacement. For full details of the Abpromise, please visit <https://www.abcam.com/abpromise> or contact our technical team.

Terms and conditions

- Guarantee only valid for products bought direct from Abcam or one of our authorized distributors