

## Product datasheet

# Anti-IRF8 antibody ab93718

[1 Image](#)

### Overview

<b>Product name</b>	Anti-IRF8 antibody
<b>Description</b>	Rabbit polyclonal to IRF8
<b>Host species</b>	Rabbit
<b>Tested applications</b>	<b>Suitable for:</b> WB
<b>Species reactivity</b>	<b>Reacts with:</b> Human <b>Predicted to work with:</b> Mouse, Rat
<b>Immunogen</b>	Synthetic peptide conjugated to KLH derived from within residues 400 to the C-terminus of Human IRF8. Read Abcam's proprietary immunogen policy
<b>Positive control</b>	This antibody gave a positive signal in Human lymph node tissue lysate.

### Properties

<b>Form</b>	Liquid
<b>Storage instructions</b>	Shipped at 4°C. Store at +4°C short term (1-2 weeks). Upon delivery aliquot. Store at -20°C or -80°C. Avoid freeze / thaw cycle.
<b>Storage buffer</b>	Preservative: 0.02% Sodium Azide Constituents: 1% BSA, PBS, pH 7.4
<b>Purity</b>	Immunogen affinity purified
<b>Clonality</b>	Polyclonal
<b>Isotype</b>	IgG

### Applications

Our [Abpromise guarantee](#) covers the use of **ab93718** in the following tested applications.

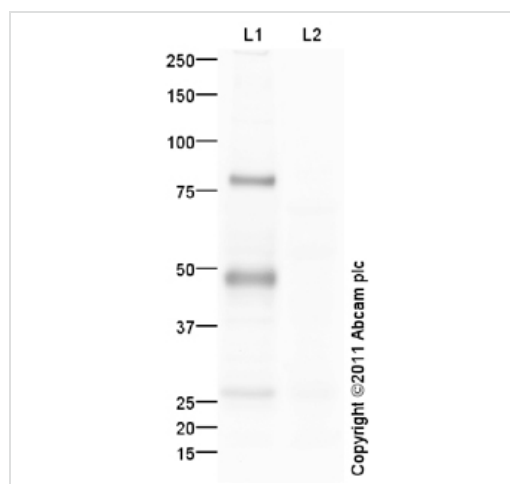
The application notes include recommended starting dilutions; optimal dilutions/concentrations should be determined by the end user.

Application	Abreviews	Notes
WB		Use a concentration of 1 µg/ml. Detects a band of approximately 48 kDa (predicted molecular weight: 48 kDa).

## Target

<b>Function</b>	Specifically binds to the upstream regulatory region of type I IFN and IFN-inducible MHC class I genes (the interferon consensus sequence (ICS)). Plays a negative regulatory role in cells of the immune system.
<b>Tissue specificity</b>	Predominantly in lymphoid tissues.
<b>Sequence similarities</b>	Belongs to the IRF family. Contains 1 IRF tryptophan pentad repeat DNA-binding domain.
<b>Post-translational modifications</b>	Ubiquitinated. Ubiquitination by TRIM21 in macrophages, a process that is strongly increased upon interferon gamma stimulation, leads to the enhanced transcriptional activity of target cytokine genes.
<b>Cellular localization</b>	Nucleus.

## Images



Western blot - Anti-IRF8 antibody (ab93718)

**All lanes** : Anti-IRF8 antibody (ab93718) at 1  $\mu$ g/ml

**Lane 1** : Human lymph node tissue lysate - total protein (ab29871)

**Lane 2** : Human lymph node tissue lysate - total protein (ab29871) with immunizing peptide at 1  $\mu$ g/ml

Lysates/proteins at 10  $\mu$ g per lane.

### Secondary

**All lanes** : Goat Anti-Rabbit IgG H&L (HRP) preadsorbed (ab97080) at 1/5000 dilution

Developed using the ECL technique.

Performed under reducing conditions.

**Predicted band size:** 48 kDa

**Observed band size:** 48 kDa

**Additional bands at:** 26 kDa, 78 kDa. We are unsure as to the identity of these extra bands.

**Exposure time:** 1 minute

## **Our Abpromise to you: Quality guaranteed and expert technical support**

---

- Replacement or refund for products not performing as stated on the datasheet
- Valid for 12 months from date of delivery
- Response to your inquiry within 24 hours
  
- We provide support in Chinese, English, French, German, Japanese and Spanish
- Extensive multi-media technical resources to help you
- We investigate all quality concerns to ensure our products perform to the highest standards

If the product does not perform as described on this datasheet, we will offer a refund or replacement. For full details of the Abpromise, please visit <https://www.abcam.com/abpromise> or contact our technical team.

## **Terms and conditions**

---

- Guarantee only valid for products bought direct from Abcam or one of our authorized distributors