

Product datasheet

Anti-IRS2 (phospho S731) antibody ab3690

★★★★☆ 1 Abreviews 7 References 3 Images

Overview

Product name	Anti-IRS2 (phospho S731) antibody
Description	Rabbit polyclonal to IRS2 (phospho S731)
Host species	Rabbit
Specificity	This antibody is specific for human IRS2 phosphorylated at the position of Serine 731. The antibodies were evaluated for specificity with a dot blot assay using synthetically prepared IRS peptides. It only recognizes the phosphorylated serine 731, not other phosphorylated sites or non-phosphorylated IRS 1 or IRS 2.
Tested applications	Suitable for: WB, IP, ELISA, IHC-P
Species reactivity	Reacts with: Mouse, Rat, Human
Immunogen	Synthetic peptide (YKASSpPAESS), corresponding to amino acids 727-736 of human IRS2 at the phosphorylated site of Serine 731. This synthetic peptide also correlates to amino acids 719-728 of mouse IRS2 at the phosphorylation site of Serine 723 and to amino acids 229-238 of rat IRS2 at the serine phosphorylation site 233. Run BLAST with ExPASy Run BLAST with NCBI

Properties

Form	Liquid
Storage instructions	Shipped at 4°C. Store at +4°C short term (1-2 weeks). Upon delivery aliquot. Store at -20°C or -80°C. Avoid freeze / thaw cycle.
Storage buffer	Preservative: 0.02% Sodium azide
Purity	Immunogen affinity purified
Clonality	Polyclonal
Isotype	IgG

Applications

Our [Abpromise guarantee](#) covers the use of **ab3690** in the following tested applications.

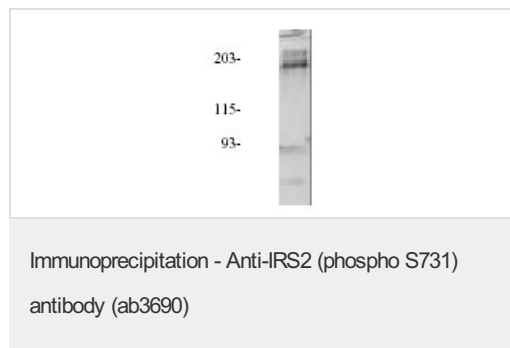
The application notes include recommended starting dilutions; optimal dilutions/concentrations should be determined by the end user.

Application	Abreviews	Notes
WB	★★★★☆	Use a concentration of 0.5 - 2 µg/ml. Detects a band of approximately 200 kDa. in cell lysate derived from mouse serum-treated fibroblasts, which corresponds to the predicted molecular weight of phospho IRS 2. Samples were boiled prior to subject 7.5% SDS-polyacrylamide gelelectrophoresis.
IP		Use at an assay dependent concentration. Use at a concentration of 3.0 - 5.0 µg / extract from 10 ⁷ cells.
ELISA		Use a concentration of 0.1 - 1 µg/ml.
IHC-P		Use a concentration of 2 µg/ml.

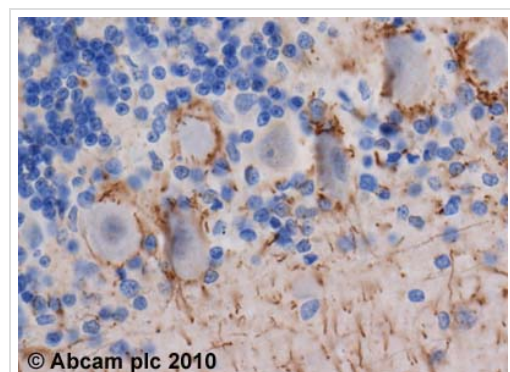
Target

Function	May mediate the control of various cellular processes by insulin.
Sequence similarities	Contains 1 IRS-type PTB domain. Contains 1 PH domain.
Post-translational modifications	Phosphorylated upon DNA damage, probably by ATM or ATR.
Cellular localization	Cytoplasm > cytosol.

Images



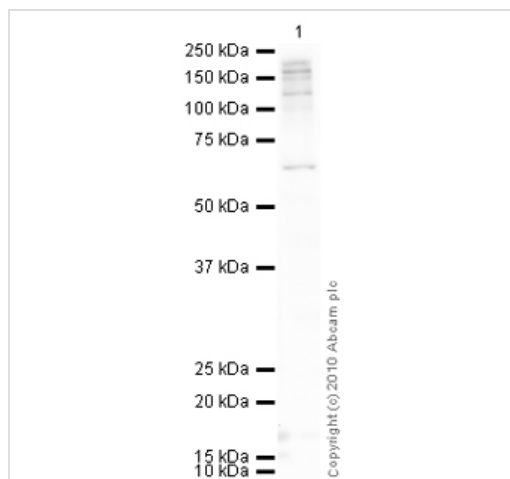
IP: 3T3 cell lysate immunoprecipitated with Anti-IRS-2 (pSER731) (ab3690)



Immunohistochemistry (Formalin/PFA-fixed paraffin-embedded sections) - Anti-IRS2 (phospho S731) antibody (ab3690)

ab3690 (2µg/ml) staining IRS2 (phospho S731) in human cerebellum using an automated system (DAKO Autostainer Plus). Using this protocol there is strong staining of the cell membrane. Sections were rehydrated and antigen retrieved with the Dako 3 in 1 AR buffer EDTA pH 9.0 in a DAKO PT link. Slides were peroxidase blocked in 3% H₂O₂ in methanol for 10 mins. They were then blocked with Dako Protein block for 10 minutes (containing casein 0.25% in PBS) then incubated with primary antibody for 20 min and detected with Dako envision flex amplification kit for 30 minutes. Colorimetric detection was completed with Diaminobenzidine for 5 minutes. Slides were counterstained with Haematoxylin and coverslipped under DePeX.

Please note that, for manual staining, optimization of primary antibody concentration and incubation time is recommended. Signal amplification may be required.



Western blot - Anti-IRS2 (phospho S731) antibody (ab3690)

Anti-IRS2 (phospho S731) antibody (ab3690) at 1 µg/ml + Brain (Mouse) Tissue Lysate at 10 µg

Secondary

Goat Anti-Rabbit IgG H&L (HRP) preadsorbed (ab97080) at 1/5000 dilution

Developed using the ECL technique.

Performed under reducing conditions.

Observed band size: 160 kDa

[why is the actual band size different from the predicted?](#)

Additional bands at: 121 kDa, 64 kDa. We are unsure as to the identity of these extra bands.

Exposure time: 8 minutes

IRS2 contains a number of potential phosphorylation sites (SwissProt) which may explain its migration at a higher molecular weight than predicted. The 160 kDa band observed is also comparable to the molecular weight seen with other commercially available antibodies to IRS2.

Please note: All products are "FOR RESEARCH USE ONLY AND ARE NOT INTENDED FOR DIAGNOSTIC OR THERAPEUTIC USE"

Our Abpromise to you: Quality guaranteed and expert technical support

- Replacement or refund for products not performing as stated on the datasheet
- Valid for 12 months from date of delivery
- Response to your inquiry within 24 hours
- We provide support in Chinese, English, French, German, Japanese and Spanish
- Extensive multi-media technical resources to help you
- We investigate all quality concerns to ensure our products perform to the highest standards

If the product does not perform as described on this datasheet, we will offer a refund or replacement. For full details of the Abpromise, please visit <https://www.abcam.com/abpromise> or contact our technical team.

Terms and conditions

- Guarantee only valid for products bought direct from Abcam or one of our authorized distributors