

Product datasheet

Anti-Importin4 antibody ab99271

[1 References](#) [2 Images](#)

Overview

Product name	Anti-Importin4 antibody
Description	Rabbit polyclonal to Importin4
Host species	Rabbit
Tested applications	Suitable for: IP, IHC-P Unsuitable for: WB
Species reactivity	Reacts with: Human
Immunogen	Synthetic peptide corresponding to a region within amino acids 900-950 (LLPVLLSTAQ EADPEVRSNA IFGMGVLAEH GGHPAQEHFP KLLGLLFPLL A) of Human Importin4 (NP_078934.3). Run BLAST with ExPASy Run BLAST with NCBI
Positive control	HeLa whole cell lysate

Properties

Form	Liquid
Storage instructions	Shipped at 4°C. Upon delivery aliquot and store at -20°C. Avoid freeze / thaw cycles.
Storage buffer	Preservative: 0.09% Sodium Azide Constituents: Tris citrate/phosphate buffer, pH 7-8
Purity	Immunogen affinity purified
Clonality	Polyclonal
Isotype	IgG

Applications

Our [Abpromise guarantee](#) covers the use of **ab99271** in the following tested applications.

The application notes include recommended starting dilutions; optimal dilutions/concentrations should be determined by the end user.

Application	Abreviews	Notes
IP		Use at 5-15 µg/mg of lysate.

Application	Abreviews	Notes
-------------	-----------	-------

IHC-P 1/1000 - 1/5000. Perform heat mediated antigen retrieval with citrate buffer pH 6 before commencing with IHC staining protocol.

Application notes Is unsuitable for WB.

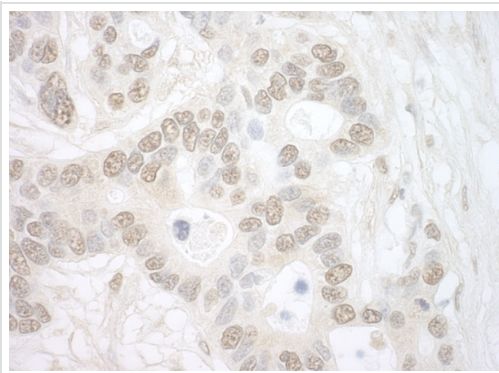
Target

Function Functions in nuclear protein import as nuclear transport receptor. Serves as receptor for nuclear localization signals (NLS) in cargo substrates. Is thought to mediate docking of the importin/substrate complex to the nuclear pore complex (NPC) through binding to nucleoporin and the complex is subsequently translocated through the pore by an energy requiring, Ran-dependent mechanism. At the nucleoplasmic side of the NPC, Ran binds to the importin, the importin/substrate complex dissociates and importin is re-exported from the nucleus to the cytoplasm where GTP hydrolysis releases Ran. The directionality of nuclear import is thought to be conferred by an asymmetric distribution of the GTP- and GDP-bound forms of Ran between the cytoplasm and nucleus (By similarity). Mediates the nuclear import of RPS3A. In vitro, mediates the nuclear import of human cytomegalovirus UL84 by recognizing a non-classical NLS.

Sequence similarities Belongs to the importin beta family.
Contains 6 HEAT repeats.
Contains 1 importin N-terminal domain.

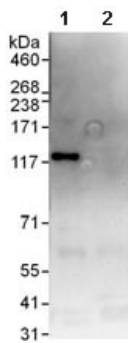
Cellular localization Cytoplasm. Nucleus.

Images



Immunohistochemistry (Formalin/PFA-fixed paraffin-embedded sections) analysis of human ovarian carcinoma tissue labelling Importin4 with ab99271 at 1/5000 (0.2µg/mg).
Detection: DAB.

Immunohistochemistry (Formalin/PFA-fixed paraffin-embedded sections) - Anti-Importin4 antibody (ab99271)



Immunoprecipitation - Anti-Importin4 antibody
(ab99271)

Detection of Importin4 in Immunoprecipitates of HeLa whole cell lysate (1 mg for IP, 20% of IP loaded) using ab99271 at 10 µg/mg lysate for IP. [ab99270](#), which recognizes an upstream epitope, was used at 1 µg/ml for subsequent Western blot detection. Lane 2 represents control IgG IP. Detection: Chemiluminescence with an exposure time of 5 seconds.

Please note: All products are "FOR RESEARCH USE ONLY AND ARE NOT INTENDED FOR DIAGNOSTIC OR THERAPEUTIC USE"

Our Abpromise to you: Quality guaranteed and expert technical support

- Replacement or refund for products not performing as stated on the datasheet
- Valid for 12 months from date of delivery
- Response to your inquiry within 24 hours
- We provide support in Chinese, English, French, German, Japanese and Spanish
- Extensive multi-media technical resources to help you
- We investigate all quality concerns to ensure our products perform to the highest standards

If the product does not perform as described on this datasheet, we will offer a refund or replacement. For full details of the Abpromise, please visit <https://www.abcam.com/abpromise> or contact our technical team.

Terms and conditions

- Guarantee only valid for products bought direct from Abcam or one of our authorized distributors