

## Product datasheet

# Anti-Integrin alpha 2 antibody [HAS-3] ab10800

★★★★☆ 4 Abreviews 5 References 2 Images

### Overview

---

<b>Product name</b>	Anti-Integrin alpha 2 antibody [HAS-3]
<b>Description</b>	Mouse monoclonal [HAS-3] to Integrin alpha 2
<b>Host species</b>	Mouse
<b>Tested applications</b>	<b>Suitable for:</b> ICC/IF, IP, Flow Cyt, IHC-P, IHC-Fr
<b>Species reactivity</b>	<b>Reacts with:</b> Human
<b>Immunogen</b>	Whole human keratinocytes.
<b>General notes</b>	The antibody co-precipitates alpha 2 beta 1 integrin from keratinocytes and inhibits HGF induced branching morphogenesis and motility of human mammary epithelial HB2 cells in collagen.

### Properties

---

<b>Form</b>	Liquid
<b>Storage instructions</b>	Shipped at 4°C. Upon delivery aliquot and store at -20°C or -80°C. Avoid repeated freeze / thaw cycles.
<b>Storage buffer</b>	Preservative: None Constituents: PBS
<b>Purity</b>	Protein A purified
<b>Primary antibody notes</b>	The antibody co-precipitates alpha 2 beta 1 integrin from keratinocytes and inhibits HGF induced branching morphogenesis and motility of human mammary epithelial HB2 cells in collagen.
<b>Clonality</b>	Monoclonal
<b>Clone number</b>	HAS-3
<b>Myeloma</b>	Sp2
<b>Isotype</b>	IgG2a

### Applications

---

Our [Abpromise guarantee](#) covers the use of **ab10800** in the following tested applications.

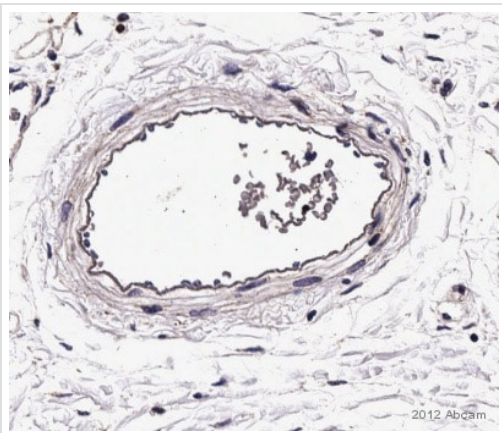
The application notes include recommended starting dilutions; optimal dilutions/concentrations should be determined by the end user.

Application	Abreviews	Notes
ICC/IF	★★★★☆	Use at an assay dependent concentration. PubMed: 20435685
IP		Use at an assay dependent concentration.
Flow Cyt		Use at an assay dependent concentration. <a href="#">ab170191</a> - Mouse monoclonal IgG2a, is suitable for use as an isotype control with this antibody.
IHC-P	★★★★☆	Use at an assay dependent concentration.
IHC-Fr		Use at an assay dependent concentration.

## Target

<b>Function</b>	Integrin alpha-2/beta-1 is a receptor for laminin, collagen, collagen C-propeptides, fibronectin and E-cadherin. It recognizes the proline-hydroxylated sequence G-F-P-G-E-R in collagen. It is responsible for adhesion of platelets and other cells to collagens, modulation of collagen and collagenase gene expression, force generation and organization of newly synthesized extracellular matrix.
<b>Sequence similarities</b>	Belongs to the integrin alpha chain family. Contains 7 FG-GAP repeats. Contains 1 VWFA domain.
<b>Domain</b>	The integrin I-domain (insert) is a VWFA domain. Integrins with I-domains do not undergo protease cleavage.
<b>Cellular localization</b>	Membrane.

## Images

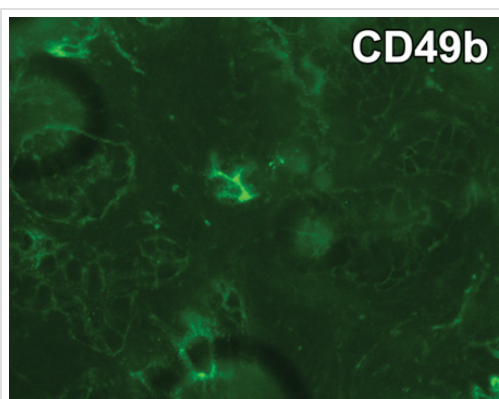


Immunohistochemistry (Formalin/PFA-fixed paraffin-embedded sections) - Anti-Integrin alpha 2 antibody [HAS-3] (ab10800)

This image is courtesy of an anonymous Abreview

Immunohistochemical analysis of Human blood vessels, staining Integrin alpha 2 with ab10800.

Tissue was fixed with formaldehyde and blocked with 3% goat serum for 30 minutes at 21°C; antigen retrieval was by an enzymatic method. Samples were incubated with primary antibody (1/10 in diluent) for 1 hour at 21°C. An undiluted streptavidin-conjugated goat anti-mouse polyclonal IgG was used as the secondary antibody.



Immunohistochemistry (Frozen sections) - Anti-Integrin alpha 2 antibody [HAS-3] (ab10800)

Image from van Leenders GJ et al., PLoS One. 2011;6(11):e26753. Epub 2011 Nov 14. Fig 9.; doi:10.1371/journal.pone.0026753; November 14, 2011, PLoS ONE 6(11): e26753.

Immunohistochemical analysis of Human prostate cancer tissue, staining Integrin alpha 2 with ab10800. Samples were incubated with primary antibody (1/100) overnight at 4°C. An AlexaFLuor®488-conjugated anti-mouse IgG (1/100) was used as the secondary antibody.

**Please note:** All products are "FOR RESEARCH USE ONLY AND ARE NOT INTENDED FOR DIAGNOSTIC OR THERAPEUTIC USE"

### Our Abpromise to you: Quality guaranteed and expert technical support

- Replacement or refund for products not performing as stated on the datasheet
- Valid for 12 months from date of delivery
- Response to your inquiry within 24 hours
- We provide support in Chinese, English, French, German, Japanese and Spanish
- Extensive multi-media technical resources to help you
- We investigate all quality concerns to ensure our products perform to the highest standards

If the product does not perform as described on this datasheet, we will offer a refund or replacement. For full details of the Abpromise, please visit <https://www.abcam.com/abpromise> or contact our technical team.

## Terms and conditions

---

- Guarantee only valid for products bought direct from Abcam or one of our authorized distributors