

Product datasheet

Anti-Integrin alpha 4 antibody [PS/2] (Phycoerythrin) ab24854

1 Image

Overview

Product name	Anti-Integrin alpha 4 antibody [PS/2] (Phycoerythrin)
Description	Rat monoclonal [PS/2] to Integrin alpha 4 (Phycoerythrin)
Host species	Rat
Conjugation	Phycoerythrin. Ex: 488nm, Em: 575nm
Specificity	This antibody is specific to CD49d, the alpha4 chain of the VLA4 integrin heterodimer.
Tested applications	Suitable for: Functional Studies, IP, Flow Cyt
Species reactivity	Reacts with: Mouse, Human
Immunogen	The details of the immunogen for this antibody are not available.
General notes	Abcam is committed to meeting high standards of ethical manufacturing and has decided to discontinue this product by June 2019 as it has been generated by the ascites method. We are sorry for any inconvenience this may cause.

Properties

Form	Liquid
Storage instructions	Shipped at 4°C. Store at +4°C.
Storage buffer	Preservative: 0.09% Sodium azide Constituents: PBS, 16% Sucrose
Purity	Stabilising agent. Affinity purified
Purification notes	Purified from ascites
Clonality	Monoclonal
Clone number	PS/2
Isotype	IgG2b
Light chain type	kappa

Applications

Our [Abpromise guarantee](#) covers the use of **ab24854** in the following tested applications.

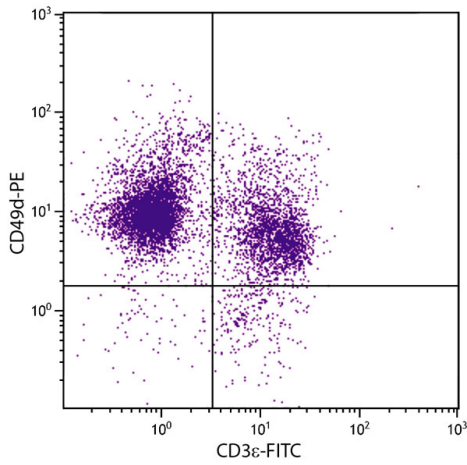
The application notes include recommended starting dilutions; optimal dilutions/concentrations should be determined by the end user.

Application	Abreviews	Notes
Functional Studies		Use at an assay dependent concentration. Studies of cell-cell interaction and tumor cell metastasis and adhesion, Inhibition of lymphopoiesis in Whitlock-Witte long-term bone marrow cultures and Retardation of myelopoiesis in Dexter-type cultures.
IP		Use at an assay dependent concentration.
Flow Cyt		Use 0.2µg for 10 ⁶ cells. ab136585 - Rat monoclonal IgG2b, is suitable for use as an isotype control with this antibody.

Target

Function	Integrins alpha-4/beta-1 (VLA-4) and alpha-4/beta-7 are receptors for fibronectin. They recognize one or more domains within the alternatively spliced CS-1 and CS-5 regions of fibronectin. They are also receptors for VCAM1. Integrin alpha-4/beta-1 recognizes the sequence Q-I-D-S in VCAM1. Integrin alpha-4/beta-7 is also a receptor for MADCAM1. It recognizes the sequence L-D-T in MADCAM1. On activated endothelial cells integrin VLA-4 triggers homotypic aggregation for most VLA-4-positive leukocyte cell lines. It may also participate in cytolytic T-cell interactions with target cells.
Sequence similarities	Belongs to the integrin alpha chain family. Contains 7 FG-GAP repeats.
Domain	The SG1 motif is involved in binding to chondroitin sulfate glycosaminoglycan and cell adhesion.
Post-translational modifications	Phosphorylation on Ser-1027 inhibits PXN binding.
Cellular localization	Membrane.

Images



Flow cytometry analysis staining Integrin alpha 4 in mouse splenocytes using ab24854 at a dilution of 0.1 µg/10⁶ cells.

Flow Cytometry - Anti-Integrin alpha 4 antibody
[PS/2] (Phycoerythrin) (ab24854)

Please note: All products are "FOR RESEARCH USE ONLY AND ARE NOT INTENDED FOR DIAGNOSTIC OR THERAPEUTIC USE"

Our Abpromise to you: Quality guaranteed and expert technical support

- Replacement or refund for products not performing as stated on the datasheet
- Valid for 12 months from date of delivery
- Response to your inquiry within 24 hours
- We provide support in Chinese, English, French, German, Japanese and Spanish
- Extensive multi-media technical resources to help you
- We investigate all quality concerns to ensure our products perform to the highest standards

If the product does not perform as described on this datasheet, we will offer a refund or replacement. For full details of the Abpromise, please visit <https://www.abcam.com/abpromise> or contact our technical team.

Terms and conditions

- Guarantee only valid for products bought direct from Abcam or one of our authorized distributors