

Product datasheet

Anti-Integrin alpha V + beta 6 antibody [$\alpha v\beta 6$ 53a.2] ab97588

★★★★★ 1 Abreviews 4 References 1 Image

Overview

Product name	Anti-Integrin alpha V + beta 6 antibody [$\alpha v\beta 6$ 53a.2]
Description	Rat monoclonal [$\alpha v\beta 6$ 53a.2] to Integrin alpha V + beta 6
Host species	Rat
Tested applications	Suitable for: Flow Cyt, ICC/IF, Neutralising
Species reactivity	Reacts with: Human
Immunogen	Mouse fibroblasts retrovirally infected with cDNA to human beta6 (3T3b6.19). Cells expressed a mouse/human $\alpha v\beta 6$ chimera.
Epitope	Extracellular region of the heterodimer.
Positive control	BT20 breast carcinoma, original immunogen.

Properties

Form	Liquid
Storage instructions	Shipped at 4°C. Upon delivery aliquot and store at -20°C. Avoid repeated freeze / thaw cycles.
Storage buffer	Preservative: None Constituents: PBS
Clonality	Monoclonal
Clone number	$\alpha v\beta 6$ 53a.2
Isotype	IgG2a

Applications

Our [Abpromise guarantee](#) covers the use of **ab97588** in the following tested applications.

The application notes include recommended starting dilutions; optimal dilutions/concentrations should be determined by the end user.

Application	Abreviews	Notes
-------------	-----------	-------

Application	Abreviews	Notes
Flow Cyt	★★★★★	Use at an assay dependent concentration. ab18450 - Rat monoclonal IgG2a, is suitable for use as an isotype control with this antibody.
ICC/IF		Use a concentration of 10 µg/ml.
Neutralising		Use at an assay dependent concentration.

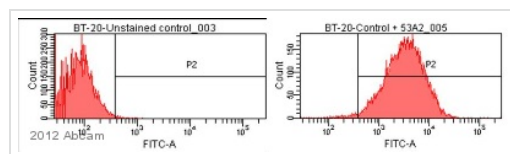
Target

Function The alpha-V integrins are receptors for vitronectin, cytotactin, fibronectin, fibrinogen, laminin, matrix metalloproteinase-2, osteopontin, osteomodulin, prothrombin, thrombospondin and vWF. They recognize the sequence R-G-D in a wide array of ligands. In case of HIV-1 infection, the interaction with extracellular viral Tat protein seems to enhance angiogenesis in Kaposi's sarcoma lesions.

Sequence similarities Belongs to the integrin alpha chain family.
Contains 7 FG-GAP repeats.

Cellular localization Membrane.

Images



Flow Cytometry - Anti-Integrin alpha V + beta 6 antibody [av36 53a.2] (ab97588)

This image is courtesy of an anonymous Abreview

Flow cytometry analysis of BT-20 breast carcinoma cells staining Integrin alpha V + beta 6 with ab97588.

Cells were cultured in serum free DMEM medium before being trypsinized from the cell culture flask. The sample was incubated with the primary antibody (5 µg/ml in serum free medium) for 1 hour at 4°C. An AlexaFluor®488-conjugated donkey anti-rat IgG polyclonal (1/250) was used as the secondary antibody.

Gating Strategy: Live cells

Please note: All products are "FOR RESEARCH USE ONLY AND ARE NOT INTENDED FOR DIAGNOSTIC OR THERAPEUTIC USE"

Our Abpromise to you: Quality guaranteed and expert technical support

- Replacement or refund for products not performing as stated on the datasheet

- Valid for 12 months from date of delivery
- Response to your inquiry within 24 hours

- We provide support in Chinese, English, French, German, Japanese and Spanish
- Extensive multi-media technical resources to help you
- We investigate all quality concerns to ensure our products perform to the highest standards

If the product does not perform as described on this datasheet, we will offer a refund or replacement. For full details of the Abpromise, please visit <https://www.abcam.com/abpromise> or contact our technical team.

Terms and conditions

- Guarantee only valid for products bought direct from Abcam or one of our authorized distributors