

## Product datasheet

# Anti-Integrin beta 8 antibody ab80673

★★★★☆ 4 Abreviews 2 References 2 Images

### Overview

<b>Product name</b>	Anti-Integrin beta 8 antibody
<b>Description</b>	Rabbit polyclonal to Integrin beta 8
<b>Host species</b>	Rabbit
<b>Tested applications</b>	<b>Suitable for:</b> ELISA, IHC-P, WB
<b>Species reactivity</b>	<b>Reacts with:</b> Rat, Human <b>Predicted to work with:</b> Mouse, Rabbit, Horse, Guinea pig, Cow, Cat, Dog, Pig
<b>Immunogen</b>	Synthetic peptide corresponding to Human Integrin beta 8 aa 614-663 (C terminal). Sequence: CTDPRSIGRFCEHCPTCYTACKENWNCMQCLHPHNLQAILDQCKTSCAL <a href="#">Run BLAST with</a> <a href="#">Run BLAST with</a>
<b>Positive control</b>	Human placenta membrane lysate This antibody gave a positive result in IHC in the following FFPE tissue: Human normal placenta.

### Properties

<b>Form</b>	Liquid
<b>Storage instructions</b>	Shipped at 4°C. Store at +4°C short term (1-2 weeks). Upon delivery aliquot. Store at -20°C. Avoid freeze / thaw cycle.
<b>Storage buffer</b>	Preservative: 0.09% Sodium azide Constituents: 2% Sucrose, PBS
<b>Purity</b>	Immunogen affinity purified
<b>Clonality</b>	Polyclonal
<b>Isotype</b>	IgG

### Applications

Our [Abpromise guarantee](#) covers the use of **ab80673** in the following tested applications.

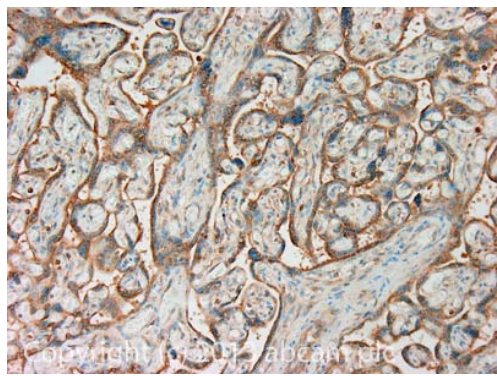
The application notes include recommended starting dilutions; optimal dilutions/concentrations should be determined by the end user.

Application	Abreviews	Notes
ELISA		Use at an assay dependent concentration. Only Peptide ELISA tested
IHC-P	★★★★☆	Use a concentration of 1 µg/ml.
WB	★★★★☆	Use a concentration of 1 µg/ml. Detects a band of approximately 81 kDa. Good results were obtained when blocked with 5% non-fat dry milk in 0.05% PBS-T.

## Target

<b>Function</b>	Integrin alpha-V/beta-8 is a receptor for fibronectin.
<b>Tissue specificity</b>	Placenta, kidney, brain, ovary, uterus and in several transformed cells. Transiently expressed in 293 human embryonic kidney cells.
<b>Sequence similarities</b>	Belongs to the integrin beta chain family. Contains 1 VWFA domain.
<b>Cellular localization</b>	Membrane.

## Images

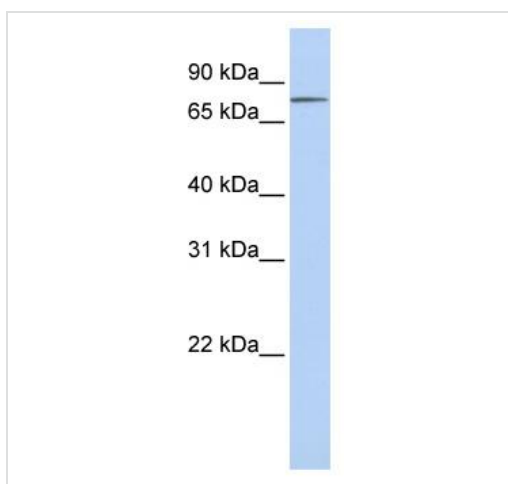


Immunohistochemistry (Formalin/PFA-fixed paraffin-embedded sections) - Anti-Integrin beta 8 antibody (ab80673)

IHC image of Integrin beta 8 staining in human placenta formalin fixed paraffin embedded tissue section\*, performed on a Leica Bond™ system using the standard protocol F. The section was pre-treated using heat mediated antigen retrieval with sodium citrate buffer (pH6, epitope retrieval solution 1) for 20 mins. The section was then incubated with ab80673, 1µg/ml, for 15 mins at room temperature and detected using an HRP conjugated compact polymer system. DAB was used as the chromogen. The section was then counterstained with haematoxylin and mounted with DPX.

For other IHC staining systems (automated and non-automated) customers should optimize variable parameters such as antigen retrieval conditions, primary antibody concentration and antibody incubation times.

\*Tissue obtained from the Human Research Tissue Bank, supported by the NIHR Cambridge Biomedical Research Centre



Western blot - Anti-Integrin beta 8 antibody (ab80673)

Anti-Integrin beta 8 antibody (ab80673) at 1 µg/ml + Placenta lysate at 10 µg

**Secondary**

HRP conjugated anti-Rabbit IgG at 1/50000 dilution

**Observed band size:** 81 kDa

**Please note:** All products are "FOR RESEARCH USE ONLY AND ARE NOT INTENDED FOR DIAGNOSTIC OR THERAPEUTIC USE"

## **Our Abpromise to you: Quality guaranteed and expert technical support**

---

- Replacement or refund for products not performing as stated on the datasheet
- Valid for 12 months from date of delivery
- Response to your inquiry within 24 hours
  
- We provide support in Chinese, English, French, German, Japanese and Spanish
- Extensive multi-media technical resources to help you
- We investigate all quality concerns to ensure our products perform to the highest standards

If the product does not perform as described on this datasheet, we will offer a refund or replacement. For full details of the Abpromise, please visit <https://www.abcam.com/abpromise> or contact our technical team.

## **Terms and conditions**

---

- Guarantee only valid for products bought direct from Abcam or one of our authorized distributors