


Product datasheet

Anti-JAK1 antibody ab47435

6 References 3 Images

Overview

<b>Product name</b>	Anti-JAK1 antibody
<b>Description</b>	Rabbit polyclonal to JAK1
<b>Host species</b>	Rabbit
<b>Specificity</b>	Detects endogenous levels of JAK1 protein
<b>Tested applications</b>	<b>Suitable for:</b> ICC/IF, IHC-P, ELISA, WB
<b>Species reactivity</b>	<b>Reacts with:</b> Mouse, Human <b>Predicted to work with:</b> Rat 
<b>Immunogen</b>	Synthetic non - phosphopeptide (Human) from around the phosphorylation site of Tyrosine 1022
<b>Positive control</b>	Human breast carcinoma tissue. Extracts from MCF7 cells.

Properties

<b>Form</b>	Liquid
<b>Storage instructions</b>	Shipped at 4°C. Store at -20°C. Stable for 12 months at -20°C.
<b>Storage buffer</b>	Preservative: 0.02% Sodium Azide Constituents: 50% Glycerol, PBS (without Mg <sup>2+</sup> or Ca <sup>2+</sup> ), 150mM Sodium chloride, pH 7.4
<b>Purity</b>	Immunogen affinity purified
<b>Purification notes</b>	Affinity purified from rabbit antiserum by affinity chromatography using epitope specific immunogen
<b>Clonality</b>	Polyclonal
<b>Isotype</b>	IgG

Applications

Our [Abpromise guarantee](#) covers the use of **ab47435** in the following tested applications.

The application notes include recommended starting dilutions; optimal dilutions/concentrations should be determined by the end user.

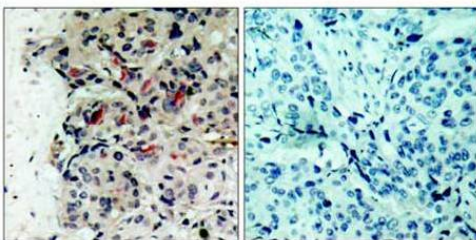
Application	Abreviews	Notes
ICC/IF		Use a concentration of 1 µg/ml.

Application	Abreviews	Notes
IHC-P		Use at an assay dependent concentration.
ELISA		1/10000.
WB		1/500 - 1/1000. Detects a band of approximately 132 kDa (predicted molecular weight: 132 kDa).

## Target

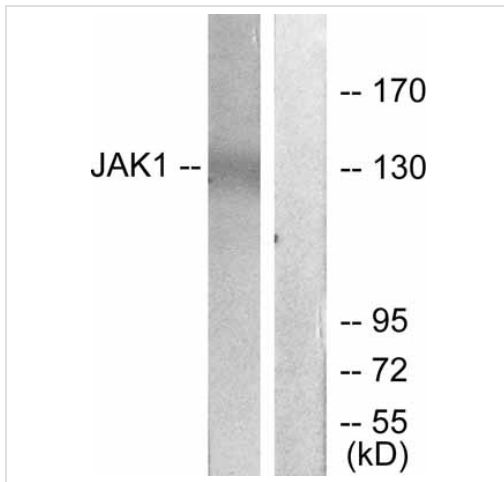
<b>Function</b>	Tyrosine kinase of the non-receptor type, involved in the IFN-alpha/beta/gamma signal pathway. Kinase partner for the interleukin (IL)-2 receptor.
<b>Tissue specificity</b>	Expressed at higher levels in primary colon tumors than in normal colon tissue. The expression level in metastatic colon tumors is comparable to the expression level in normal colon tissue.
<b>Sequence similarities</b>	Belongs to the protein kinase superfamily. Tyr protein kinase family. JAK subfamily. Contains 1 FERM domain. Contains 1 protein kinase domain. Contains 1 SH2 domain.
<b>Domain</b>	Possesses two phosphotransferase domains. The second one probably contains the catalytic domain (By similarity), while the presence of slight differences suggest a different role for domain 1. The FERM domain mediates interaction with JAKMIP1.
<b>Cellular localization</b>	Endomembrane system. Wholly intracellular, possibly membrane associated.

## Images



Immunohistochemical staining of paraffin embedded human breast carcinoma tissue using ab47435 at dilution of 1/50-1/100. Right panel treated with peptide and left panel untreated

Immunohistochemistry (Formalin/PFA-fixed paraffin-embedded sections) - Anti-JAK1 antibody (ab47435)



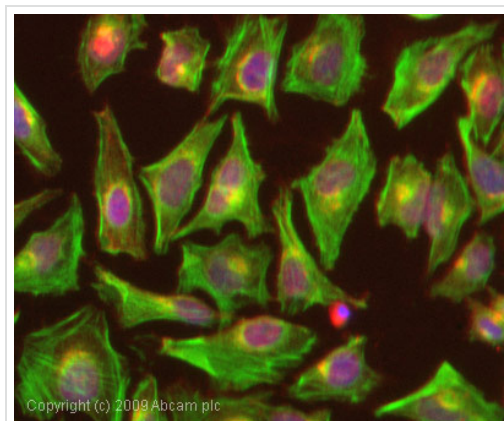
Western blot - Anti-JAK1 antibody (ab47435)

**All lanes :** Anti-JAK1 antibody (ab47435) at 1/500 dilution

**Lane 1 :** MCF7 cell extract treated with EGF

**Lane 2 :** MCF7 cell extract treated with EGF with peptide

**Predicted band size:** 132 kDa



Immunocytochemistry/ Immunofluorescence - Anti-JAK1 antibody (ab47435)

ICC/IF image of ab47435 stained HeLa cells. The cells were 4% PFA fixed (10 min) and then incubated in 1%BSA / 10% normal goat serum / 0.3M glycine in 0.1% PBS-Tween for 1h to permeabilise the cells and block non-specific protein-protein interactions. The cells were then incubated with the antibody (ab47435, 1µg/ml) overnight at +4°C. The secondary antibody (green) was Alexa Fluor® 488 goat anti-rabbit IgG (H+L) used at a 1/1000 dilution for 1h. Alexa Fluor® 594 WGA was used to label plasma membranes (red) at a 1/200 dilution for 1h. DAPI was used to stain the cell nuclei (blue) at a concentration of 1.43µM.

**Please note:** All products are "FOR RESEARCH USE ONLY AND ARE NOT INTENDED FOR DIAGNOSTIC OR THERAPEUTIC USE"

### Our Abpromise to you: Quality guaranteed and expert technical support

- Replacement or refund for products not performing as stated on the datasheet
- Valid for 12 months from date of delivery
- Response to your inquiry within 24 hours
- We provide support in Chinese, English, French, German, Japanese and Spanish
- Extensive multi-media technical resources to help you
- We investigate all quality concerns to ensure our products perform to the highest standards

If the product does not perform as described on this datasheet, we will offer a refund or replacement. For full details of the Abpromise, please visit <https://www.abcam.com/abpromise> or contact our technical team.

## Terms and conditions

---

- Guarantee only valid for products bought direct from Abcam or one of our authorized distributors