

## Product datasheet

# Anti-JMJD1A antibody ab106456

[1 References](#) [3 Images](#)

### Overview

<b>Product name</b>	Anti-JMJD1A antibody
<b>Description</b>	Rabbit polyclonal to JMJD1A
<b>Host species</b>	Rabbit
<b>Specificity</b>	ab106456 does not cross-react with JMJD1B or JMJD1C.
<b>Tested applications</b>	<b>Suitable for:</b> ICC/IF, WB, IHC-P
<b>Species reactivity</b>	<b>Reacts with:</b> Mouse, Rat, Human
<b>Immunogen</b>	Synthetic peptide corresponding to Human JMJD1A (N terminal). Database link: <a href="#">Q9Y4C1</a>
<b>Positive control</b>	Mouse liver tissue lysate; Rat liver tissue.

### Properties

<b>Form</b>	Liquid
<b>Storage instructions</b>	Shipped at 4°C. Store at 4°C (stable for up to 12 months).
<b>Storage buffer</b>	Preservative: 0.02% Sodium Azide Constituents: PBS
<b>Purity</b>	Immunogen affinity purified
<b>Purification notes</b>	ab106456 is purified by affinity chromatography via a peptide column.
<b>Clonality</b>	Polyclonal
<b>Isotype</b>	IgG

### Applications

Our [Abpromise guarantee](#) covers the use of **ab106456** in the following tested applications.

The application notes include recommended starting dilutions; optimal dilutions/concentrations should be determined by the end user.

Application	Abreviews	Notes
ICC/IF		Use a concentration of 20 µg/ml.

Application	Abreviews	Notes
WB		Use a concentration of 1 - 2 µg/ml. Predicted molecular weight: 147 kDa.
IHC-P		Use a concentration of 5 µg/ml.

## Target

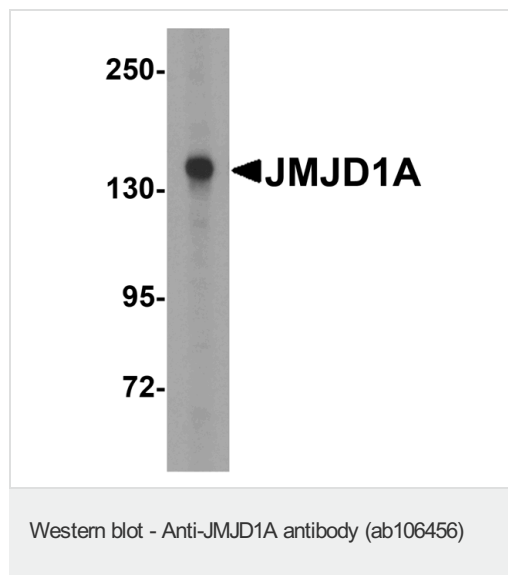
### Relevance

This gene encodes a zinc finger protein that contains a jumonji domain and may play a role in hormone-dependent transcriptional activation. Alternative splicing results in multiple transcript variants.

### Cellular localization

Cytoplasmic and Nuclear

## Images

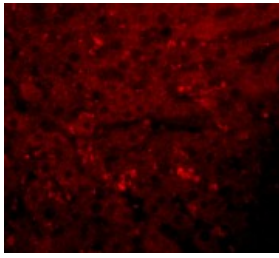


Anti-JMJD1A antibody (ab106456) at 1 µg/ml  
+ HepG2 (human liver hepatocellular carcinoma cell line) cell lysate

**Predicted band size:** 147 kDa



ab106456, at 5 µg/ml staining JMJD1A in Rat liver tissue by Immunohistochemistry, Paraffin-embedded tissue.



Immunofluorescence of JMJD1A in Rat Liver cells using ab106456 at 20 ug/ml.

Immunocytochemistry/ Immunofluorescence - Anti-JMJD1A antibody (ab106456)

**Please note:** All products are "FOR RESEARCH USE ONLY AND ARE NOT INTENDED FOR DIAGNOSTIC OR THERAPEUTIC USE"

### **Our Abpromise to you: Quality guaranteed and expert technical support**

- Replacement or refund for products not performing as stated on the datasheet
- Valid for 12 months from date of delivery
- Response to your inquiry within 24 hours
- We provide support in Chinese, English, French, German, Japanese and Spanish
- Extensive multi-media technical resources to help you
- We investigate all quality concerns to ensure our products perform to the highest standards

If the product does not perform as described on this datasheet, we will offer a refund or replacement. For full details of the Abpromise, please visit <https://www.abcam.com/abpromise> or contact our technical team.

### **Terms and conditions**

- Guarantee only valid for products bought direct from Abcam or one of our authorized distributors