

Product datasheet

Anti-KDM1 / LSD1 antibody ab37165

[6 References](#) [3 Images](#)

Overview

Product name	Anti-KDM1 / LSD1 antibody
Description	Rabbit polyclonal to KDM1 / LSD1
Host species	Rabbit
Tested applications	Suitable for: IHC-P, IHC-Fr, IP, WB
Species reactivity	Reacts with: Mouse, Rat, Human
Immunogen	Synthetic peptide, corresponding to a 17 amino acid peptide from near the N terminus of Human LSD1
Positive control	Mouse P815 cell lysate IHC-P: Human prostate FFPE tissue sections.

Properties

Form	Liquid
Storage instructions	Shipped at 4°C. Store at +4°C. Do Not Freeze.
Storage buffer	Preservative: 0.02% Sodium Azide Constituents: PBS
Purity	Immunogen affinity purified
Clonality	Polyclonal
Isotype	IgG

Applications

Our [Abpromise guarantee](#) covers the use of **ab37165** in the following tested applications.

The application notes include recommended starting dilutions; optimal dilutions/concentrations should be determined by the end user.

Application	Abreviews	Notes
IHC-P		Use a concentration of 2 µg/ml.
IHC-Fr		Use a concentration of 1 µg/ml.
IP		Use at an assay dependent concentration. PubMed: 20404188

Application	Abreviews	Notes
WB		Use a concentration of 1 - 2 µg/ml. Detects a band of approximately 105 kDa (predicted molecular weight: 93 kDa).

Target

Function

Histone demethylase that demethylates both 'Lys-4' (H3K4me) and 'Lys-9' (H3K9me) of histone H3, thereby acting as a coactivator or a corepressor, depending on the context. Acts by oxidizing the substrate by FAD to generate the corresponding imine that is subsequently hydrolyzed. Acts as a corepressor by mediating demethylation of H3K4me, a specific tag for epigenetic transcriptional activation. Demethylates both mono- (H3K4me1) and di-methylated (H3K4me2) H3K4me. May play a role in the repression of neuronal genes. Alone, it is unable to demethylate H3K4me on nucleosomes and requires the presence of RCOR1/CoREST to achieve such activity. Also acts as a coactivator of androgen receptor (ANDR)-dependent transcription, by being recruited to ANDR target genes and mediating demethylation of H3K9me, a specific tag for epigenetic transcriptional repression. The presence of PRKCB in ANDR-containing complexes, which mediates phosphorylation of 'Thr-6' of histone H3 (H3T6ph), a specific tag that prevents demethylation H3K4me, prevents H3K4me demethylase activity of KDM1A. Demethylates di-methylated 'Lys-370' of p53/TP53 which prevents interaction of p53/TP53 with TP53BP1 and represses p53/TP53-mediated transcriptional activation. Demethylates and stabilizes the DNA methylase DNMT1. Required for gastrulation during embryogenesis.

Tissue specificity

Ubiquitously expressed.

Sequence similarities

Belongs to the flavin monoamine oxidase family.
Contains 1 SWIRM domain.

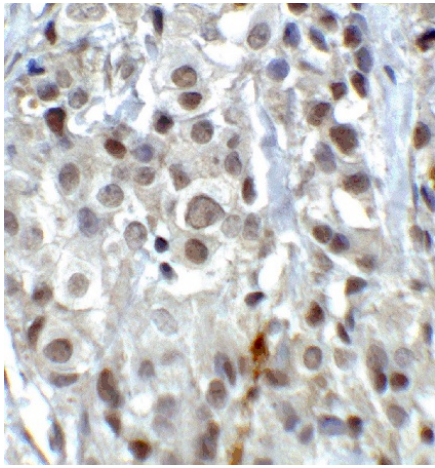
Domain

The SWIRM domain may act as an anchor site for a histone tail.

Cellular localization

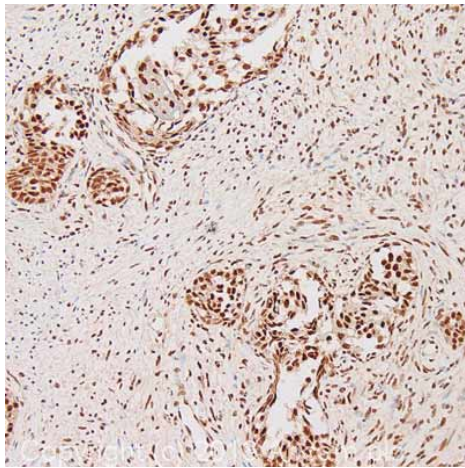
Nucleus.

Images



Immunohistochemistry (Formalin/PFA-fixed paraffin-embedded sections) - Anti-KDM1 / LSD1 antibody (ab37165)

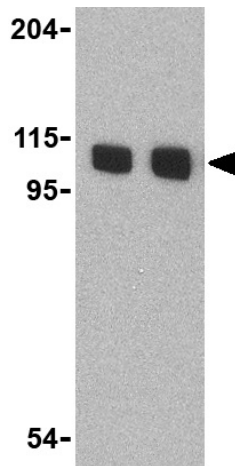
Immunohistochemistry (Formalin-fixed paraffin embedded sections) of human breast carcinoma tissue labeling KDM1 / LSD1 with Anti-KDM1 / LSD1 antibody (ab37165) at 2 μ g/ml.



Immunohistochemistry (Formalin/PFA-fixed paraffin-embedded sections) - Anti-KDM1 / LSD1 antibody (ab37165)

IHC image of KDM1/LSD1 staining in human prostate formalin fixed paraffin embedded tissue section, performed on a Leica Bond system using the standard protocol F. The section was pre-treated using heat mediated antigen retrieval with sodium citrate buffer (pH6, epitope retrieval solution 1) for 20 mins. The section was then incubated with ab37165, 1 μ g/ml, for 15 mins at room temperature and detected using an HRP conjugated compact polymer system. DAB was used as the chromogen. The section was then counterstained with haematoxylin and mounted with DPX.

For other IHC staining systems (automated and non-automated) customers should optimize variable parameters such as antigen retrieval conditions, primary antibody concentration and antibody incubation times.



Western blot - Anti-KDM1 / LSD1 antibody
(ab37165)

Lane 1 : Anti-KDM1 / LSD1 antibody
(ab37165) at 1 µg/ml

Lane 2 : Anti-KDM1 / LSD1 antibody
(ab37165) at 2 µg/ml

All lanes : Mouse P815 cell lysate

Lysates/proteins at 15 µg per lane.

Predicted band size: 93 kDa

Observed band size: 105 kDa

Please note: All products are "FOR RESEARCH USE ONLY AND ARE NOT INTENDED FOR DIAGNOSTIC OR THERAPEUTIC USE"

Our Abpromise to you: Quality guaranteed and expert technical support

- Replacement or refund for products not performing as stated on the datasheet
- Valid for 12 months from date of delivery
- Response to your inquiry within 24 hours
- We provide support in Chinese, English, French, German, Japanese and Spanish
- Extensive multi-media technical resources to help you
- We investigate all quality concerns to ensure our products perform to the highest standards

If the product does not perform as described on this datasheet, we will offer a refund or replacement. For full details of the Abpromise, please visit <https://www.abcam.com/abpromise> or contact our technical team.

Terms and conditions

- Guarantee only valid for products bought direct from Abcam or one of our authorized distributors