


Product datasheet

Anti-KLF13 antibody ab88536

1 Image

Overview

<b>Product name</b>	Anti-KLF13 antibody
<b>Description</b>	Rabbit polyclonal to KLF13
<b>Host species</b>	Rabbit
<b>Tested applications</b>	<b>Suitable for:</b> WB
<b>Species reactivity</b>	<b>Reacts with:</b> Human <b>Predicted to work with:</b> Mouse 
<b>Immunogen</b>	Synthetic peptide conjugated to KLH derived from within residues 1 - 100 of Human KLF13. Read Abcam's proprietary immunogen policy
<b>Positive control</b>	This antibody gave a positive signal in the following nuclear lysates: HeLa; Jurkat; HepG2; MCF7.

Properties

<b>Form</b>	Liquid
<b>Storage instructions</b>	Shipped at 4°C. Store at +4°C short term (1-2 weeks). Upon delivery aliquot. Store at -20°C or -80°C. Avoid freeze / thaw cycle.
<b>Storage buffer</b>	Preservative: 0.02% Sodium Azide Constituents: 1% BSA, PBS, pH 7.4
<b>Purity</b>	Immunogen affinity purified
<b>Clonality</b>	Polyclonal
<b>Isotype</b>	IgG

Applications

Our [Abpromise guarantee](#) covers the use of **ab88536** in the following tested applications.

The application notes include recommended starting dilutions; optimal dilutions/concentrations should be determined by the end user.

Application	Abreviews	Notes
WB		Use a concentration of 1 µg/ml. Detects a band of approximately 28 kDa (predicted molecular weight: 31 kDa).

## Target

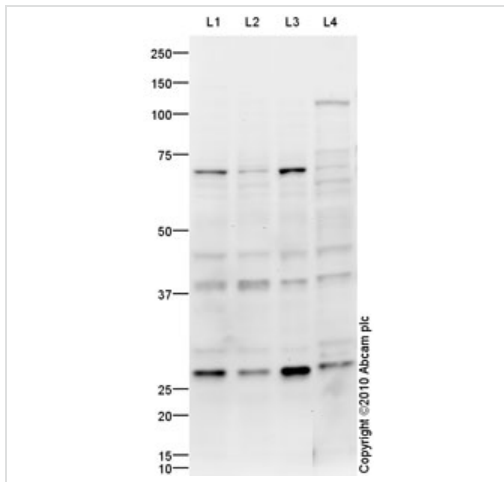
---

<b>Function</b>	Represses transcription by binding to the BTE site, a GC-rich DNA element, in competition with the activator SP1. It also represses transcription by interacting with the corepressor Sin3A and HDAC1. Activates RANTES expression in T-cells.
<b>Tissue specificity</b>	Ubiquitous.
<b>Sequence similarities</b>	Belongs to the Sp1 C2H2-type zinc-finger protein family. Contains 3 C2H2-type zinc fingers.
<b>Domain</b>	The Ala/Pro-rich domain may contain discrete activation and repression subdomains and also can mediate protein-protein interactions.
<b>Post-translational modifications</b>	Phosphorylated.
<b>Cellular localization</b>	Nucleus.

---

## Images

---



Western blot - Anti-KLF13 antibody (ab88536)

**All lanes :** Anti-KLF13 antibody (ab88536) at 1 µg/ml

**Lane 1 :** HeLa (Human epithelial carcinoma cell line) Nuclear Lysate

**Lane 2 :** Jurkat nuclear extract lysate (ab14844)

**Lane 3 :** HepG2 (Human hepatocellular liver carcinoma cell line) Nuclear Lysate

**Lane 4 :** MCF7 nuclear extract lysate (ab14860)

Lysates/proteins at 10 µg per lane.

### Secondary

**All lanes :** Goat Anti-Rabbit IgG H&L (HRP) preadsorbed (ab97080) at 1/5000 dilution

Developed using the ECL technique.

Performed under reducing conditions.

**Predicted band size:** 31 kDa

**Observed band size:** 28 kDa

**Additional bands at:** 40 kDa, 45 kDa, 70 kDa. We are unsure as to the identity of these extra bands.

**Exposure time:** 12 minutes

**Please note:** All products are "FOR RESEARCH USE ONLY AND ARE NOT INTENDED FOR DIAGNOSTIC OR THERAPEUTIC USE"

### Our Abpromise to you: Quality guaranteed and expert technical support

- Replacement or refund for products not performing as stated on the datasheet
- Valid for 12 months from date of delivery
- Response to your inquiry within 24 hours
- We provide support in Chinese, English, French, German, Japanese and Spanish
- Extensive multi-media technical resources to help you
- We investigate all quality concerns to ensure our products perform to the highest standards

If the product does not perform as described on this datasheet, we will offer a refund or replacement. For full details of the Abpromise, please visit <https://www.abcam.com/abpromise> or contact our technical team.

## Terms and conditions

---

- Guarantee only valid for products bought direct from Abcam or one of our authorized distributors