


Product datasheet

Anti-KLF15 antibody ab2647

11 References 3 Images

Overview

Product name	Anti-KLF15 antibody
Description	Goat polyclonal to KLF15
Host species	Goat
Tested applications	Suitable for: IP, WB, IHC-P
Species reactivity	Reacts with: Human Predicted to work with: Mouse, Rat, Pig 
Immunogen	Synthetic peptide: VDHLLPVDFNFSS, corresponding to N terminal amino acids 2-14 of Human KLF15. Run BLAST with ExPASy Run BLAST with NCBI
Positive control	Human Liver or HepG2 lysate
General notes	Principal Names – KLF15; Kruppel-like factor 15; KKLK; KKLK protein; kidney-enriched Kruppel-like factor Official Gene Symbol - KLF15 GenBank Accession Number – NP_054798 LocusLink ID - 28999 (human); 66277 (mouse); 85497 (rat)

We no longer guarantee this product for mouse because of recent complaints. The immunogen however shares 92% sequence homology with mouse so we still predict the antibody will cross-react. We will welcome any feedback from customers.

Properties

Form	Liquid
Storage instructions	Shipped at 4°C. Upon delivery aliquot and store at -20°C or -80°C. Avoid repeated freeze / thaw cycles.
Storage buffer	Preservative: 0.02% Sodium Azide Constituents: 0.5% BSA, Tris buffered saline, pH 7.3
Purity	Immunogen affinity purified
Purification notes	Purified from goat serum by ammonium sulphate precipitation followed by antigen affinity chromatography using the immunizing peptide.
Clonality	Polyclonal
Isotype	IgG

Applications

Our [Abpromise guarantee](#) covers the use of **ab2647** in the following tested applications.

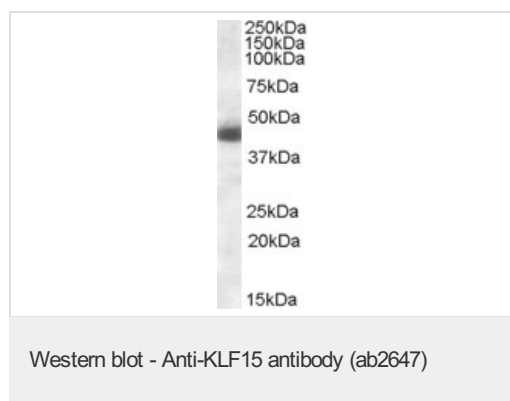
The application notes include recommended starting dilutions; optimal dilutions/concentrations should be determined by the end user.

Application	Abreviews	Notes
IP		Use at an assay dependent concentration. PubMed: 24407292
WB		Use a concentration of 0.5 - 1.5 µg/ml. Detects a band of approximately 45 kDa (predicted molecular weight: 44 kDa). Can be blocked with Human KLF15 peptide (ab22927) . Approx 48kDa band observed in lysates of hepatoblastoma cell line HepG2 (calculated MW of 44.0kDa according to NP_054798.1). Older batches detected a band of approximately 65 kDa in Human Liver lysate (predicted molecular weight: 46 kDa). Note the higher than expected size is in agreement with previous Western results (Mol Cell Biol 2000 Oct;20(19):7319-31).
IHC-P		Use at an assay dependent concentration. PubMed: 26378916

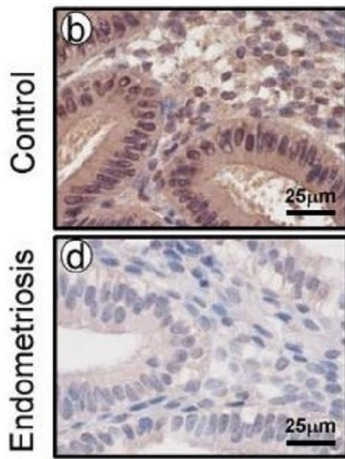
Target

Function	Transcriptional activator. Binds to the GA element of the CLCNKA promoter.
Tissue specificity	Highly expressed in liver, followed by heart, skeletal muscle, and kidney. Not expressed in bone marrow or lymphoid tissues.
Sequence similarities	Belongs to the Sp1 C2H2-type zinc-finger protein family. Contains 3 C2H2-type zinc fingers.
Cellular localization	Nucleus.

Images



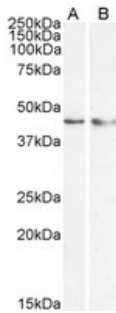
ab2647 staining (2µg/ml) of Human Liver lysate (RIPA buffer, 30µg total protein per lane). Primary incubated for 12 hours. Detected by western blot using chemiluminescence. ab2647 staining (1 µg/ml) of Mouse skeletal muscle lysate (RIPA buffer, 30µg total protein per lane). Primary incubated for 12 hours. Detected by western blot using chemiluminescence.



Immunohistochemistry (Formalin/PFA-fixed paraffin-embedded sections) - Anti-KLF15 antibody (ab2647)

Image is from Hoon-Kim et al., PLoS Genet., 11(9), Fig 8. doi: 10.1371/journal.pgen.1005537

The level of KLF15 in human endometrium without (b) and with (d) endometriosis were performed by immunohistochemical analysis. Paraffin-embedded tissues were cut at 5 µm and mounted on silane-coated slides, deparaffinized, and rehydrated in a graded alcohol series before blocking with 10% normal goat serum in PBS (pH 7.5) and incubating with ab2647 diluted 1:5000 in 10% normal goat serum in PBS (pH 7.5) overnight at 4°C



Western blot - Anti-KLF15 antibody (ab2647)

Lane 1 : Anti-KLF15 antibody (ab2647) at 1 µg/ml

Lane 2 : Anti-KLF15 antibody (ab2647) at 0.5 µg/ml

Lane 1 : HepG2 cell lysate

Lane 2 : HeLa cell lysate

Lysates/proteins at 35 µg per lane.

Predicted band size: 44 kDa

Please note: All products are "FOR RESEARCH USE ONLY AND ARE NOT INTENDED FOR DIAGNOSTIC OR THERAPEUTIC USE"

Our Abpromise to you: Quality guaranteed and expert technical support

- Replacement or refund for products not performing as stated on the datasheet
- Valid for 12 months from date of delivery
- Response to your inquiry within 24 hours
- We provide support in Chinese, English, French, German, Japanese and Spanish
- Extensive multi-media technical resources to help you
- We investigate all quality concerns to ensure our products perform to the highest standards

If the product does not perform as described on this datasheet, we will offer a refund or replacement. For full details of the Abpromise, please visit <https://www.abcam.com/abpromise> or contact our technical team.

Terms and conditions

- Guarantee only valid for products bought direct from Abcam or one of our authorized distributors