

Product datasheet

Anti-KLF16 antibody ab2718

[1 References](#) [1 Image](#)

Overview

Product name	Anti-KLF16 antibody
Description	Goat polyclonal to KLF16
Host species	Goat
Tested applications	Suitable for: WB
Species reactivity	Reacts with: Human
Immunogen	Synthetic peptide: PAPSPAPSPAPAGL, corresponding to C terminal amino acids 239-252 of Human KLF16. Run BLAST with ExPASy Run BLAST with NCBI
Positive control	293 lysate
General notes	Principal Names – KLF16; Kruppel-like factor 16; DRRF; BTEB4; NSLP2; BTE-binding protein 4; basic transcription element binding protein 4; likely ortholog of mouse dopamine receptor regulating factor Official Gene Symbol - KLF16 GenBank Accession Number – NP_114124 LocusLink ID - 83855 (human)

Properties

Form	Liquid
Storage instructions	Shipped at 4°C. Upon delivery aliquot and store at -20°C or -80°C. Avoid repeated freeze / thaw cycles.
Storage buffer	Preservative: 0.02% Sodium Azide Constituents: 0.5% BSA, Tris buffered saline, pH 7.3
Purity	Immunogen affinity purified
Purification notes	Purified from goat serum by ammonium sulphate precipitation followed by antigen affinity chromatography using the immunizing peptide.
Clonality	Polyclonal
Isotype	IgG

Applications

Our [Abpromise guarantee](#) covers the use of **ab2718** in the following tested applications.

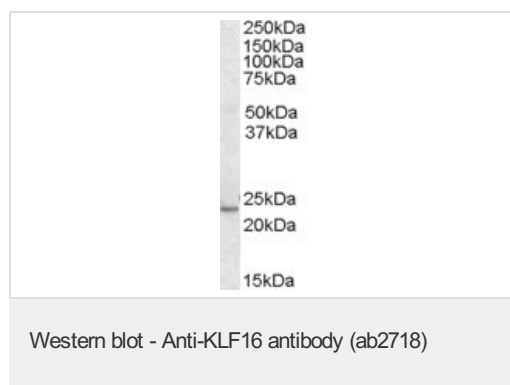
The application notes include recommended starting dilutions; optimal dilutions/concentrations should be determined by the end user.

Application	Abreviews	Notes
WB		Use a concentration of 0.3 - 1 µg/ml. Detects a band of approximately 24 kDa (predicted molecular weight: 25 kDa). Can be blocked with Human KLF16 peptide (ab22933) .

Target

Function	Transcription factor that binds GC and GT boxes and displaces Sp1 and Sp3 from these sequences. Modulates dopaminergic transmission in the brain.
Sequence similarities	Belongs to the Sp1 C2H2-type zinc-finger protein family. Contains 3 C2H2-type zinc fingers.
Cellular localization	Nucleus.

Images



ab2718 staining (3µg/ml) of 293 lysate (RIPA buffer, 30µg total protein per lane). Primary incubated for 12 hours. Detected by western blot using chemiluminescence. ab2718 staining (0.3 µg/ml) Human heart tissue lysate (RIPA buffer, 35 µg total protein per lane). Primary incubated for 1 hour. Detected by western blot using chemiluminescence.

Please note: All products are "FOR RESEARCH USE ONLY AND ARE NOT INTENDED FOR DIAGNOSTIC OR THERAPEUTIC USE"

Our Abpromise to you: Quality guaranteed and expert technical support

- Replacement or refund for products not performing as stated on the datasheet
- Valid for 12 months from date of delivery
- Response to your inquiry within 24 hours
- We provide support in Chinese, English, French, German, Japanese and Spanish
- Extensive multi-media technical resources to help you
- We investigate all quality concerns to ensure our products perform to the highest standards

If the product does not perform as described on this datasheet, we will offer a refund or replacement. For full details of the Abpromise, please visit <https://www.abcam.com/abpromise> or contact our technical team.

Terms and conditions

- Guarantee only valid for products bought direct from Abcam or one of our authorized distributors