


Product datasheet

Anti-KLF9 antibody ab124145

2 Images

Overview

Product name	Anti-KLF9 antibody
Description	Rabbit polyclonal to KLF9
Host species	Rabbit
Tested applications	Suitable for: WB, ICC/IF
Species reactivity	Reacts with: Human Predicted to work with: Mouse, Rat, Pig 
Immunogen	Synthetic peptide conjugated to KLH, corresponding to a region within N terminal amino acids 28-57 of Human KLF9 (NP_001197.1).
Positive control	WiDr cell line lysate

Properties

Form	Liquid
Storage instructions	Shipped at 4°C. Store at 4°C (up to 6 months). Store at -20°C long term.
Storage buffer	Preservative: 0.09% Sodium azide Constituent: 99% PBS
Purity	Immunogen affinity purified
Purification notes	ab124145 was purified through a protein A column, followed by peptide affinity purification.
Clonality	Polyclonal
Isotype	IgG

Applications

Our [Abpromise guarantee](#) covers the use of **ab124145** in the following tested applications.

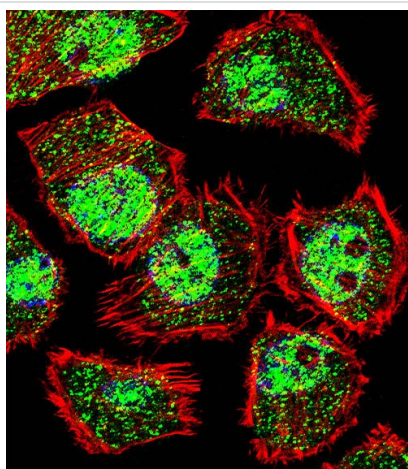
The application notes include recommended starting dilutions; optimal dilutions/concentrations should be determined by the end user.

Application	Abreviews	Notes
WB		1/1000. Predicted molecular weight: 27 kDa.
ICC/IF		1/10 - 1/50.

Target

Function	Transcription factor that binds to GC box promoter elements. Selectively activates mRNA synthesis from genes containing tandem repeats of GC boxes but represses genes with a single GC box.
Sequence similarities	Belongs to the Sp1 C2H2-type zinc-finger protein family. Contains 3 C2H2-type zinc fingers.
Cellular localization	Nucleus.

Images



Immunocytochemistry/ Immunofluorescence - Anti-KLF9 antibody (ab124145)

Immunofluorescence of U251 cells labelling KLF9 with ab124145. U251 cells were fixed with 4% PFA (20 min), permeabilized with Triton X-100 (0.1%, 10 min), then incubated with ab124145 (1:25, 1 h at 37°C). Alexa Fluor® 488 conjugated donkey anti-rabbit antibody (green) was used as the secondary antibody (1:400, 50 min at 37°C). Cytoplasmic actin was counterstained with Alexa Fluor® 555 (red) conjugated Phalloidin (7units/ml, 1 h at 37°C) and nuclei were counterstained with DAPI (blue) (10 µg/ml, 10 min). KLF9 immunoreactivity is localized to vesicles and the nucleus.



Western blot - Anti-KLF9 antibody (ab124145)

Anti-KLF9 antibody (ab124145) at 1/100 dilution + WiDr cell line lysate at 35 µg

Predicted band size: 27 kDa

Please note: All products are "FOR RESEARCH USE ONLY AND ARE NOT INTENDED FOR DIAGNOSTIC OR THERAPEUTIC USE"

Our Promise to you: Quality guaranteed and expert technical support

- Replacement or refund for products not performing as stated on the datasheet
- Valid for 12 months from date of delivery
- Response to your inquiry within 24 hours

- We provide support in Chinese, English, French, German, Japanese and Spanish
- Extensive multi-media technical resources to help you
- We investigate all quality concerns to ensure our products perform to the highest standards

If the product does not perform as described on this datasheet, we will offer a refund or replacement. For full details of the Abpromise, please visit <https://www.abcam.com/abpromise> or contact our technical team.

Terms and conditions

- Guarantee only valid for products bought direct from Abcam or one of our authorized distributors