


Product datasheet

Anti-KLHL15 antibody ab86448

1 Image

Overview

Product name	Anti-KLHL15 antibody
Description	Rabbit polyclonal to KLHL15
Host species	Rabbit
Tested applications	Suitable for: WB
Species reactivity	Reacts with: Human Predicted to work with: Mouse, Rat, Horse, Guinea pig, Cow, Cat, Dog, Zebrafish 
Immunogen	Synthetic peptide corresponding to a region within internal sequence amino acids 540-589 (LDKQIMVLGG LCYNGHYS DS ILTFDPDENK WKEDEYPRMP CKLDGLQVCN) of human KLHL15 (NP_085127). Run BLAST with ExPASy Run BLAST with NCBI
Positive control	293T cell lysate

Properties

Form	Liquid
Storage instructions	Shipped at 4°C. Upon delivery aliquot and store at -20°C. Avoid repeated freeze / thaw cycles.
Storage buffer	Preservative: None Constituents: 2% Sucrose, PBS
Purity	Immunogen affinity purified
Purification notes	Purified by peptide affinity chromatography method.
Clonality	Polyclonal
Isotype	IgG

Applications

Our [Abpromise guarantee](#) covers the use of **ab86448** in the following tested applications.

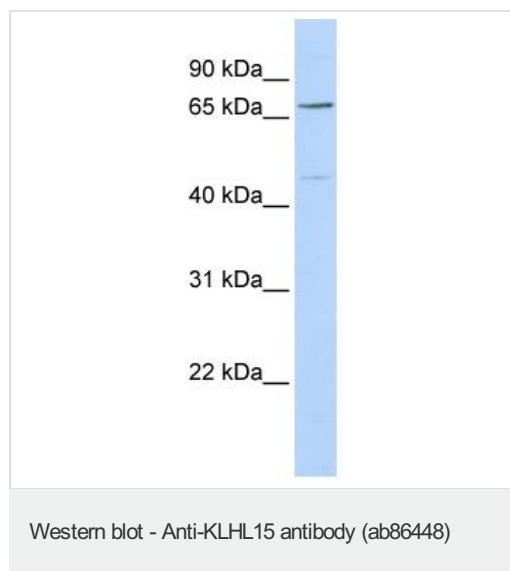
The application notes include recommended starting dilutions; optimal dilutions/concentrations should be determined by the end user.

Application	Abreviews	Notes
WB		Use a concentration of 1 µg/ml. Predicted molecular weight: 70 kDa. Good results were obtained when blocked with 5% non-fat dry milk in 0.05% PBS-T.

Target

Function	Probable substrate-specific adapter of an E3 ubiquitin-protein ligase complex which mediates the ubiquitination and subsequent proteasomal degradation of target proteins.
Pathway	Protein modification; protein ubiquitination.
Sequence similarities	Contains 1 BACK (BTB/Kelch associated) domain. Contains 1 BTB (POZ) domain. Contains 5 Kelch repeats.

Images



Anti-KLHL15 antibody (ab86448) at 1 µg/ml
(5% skim milk/ PBS buffer) + 293T cell lysate
at 10 µg

Secondary

HRP conjugated anti-Rabbit IgG at 1/50000
dilution

Predicted band size: 70 kDa

Observed band size: 70 kDa

Additional bands at: 50 kDa. We are unsure
as to the identity of these extra bands.

Gel concentration: 12%

Please note: All products are "FOR RESEARCH USE ONLY AND ARE NOT INTENDED FOR DIAGNOSTIC OR THERAPEUTIC USE"

Our Abpromise to you: Quality guaranteed and expert technical support

- Replacement or refund for products not performing as stated on the datasheet
- Valid for 12 months from date of delivery
- Response to your inquiry within 24 hours
- We provide support in Chinese, English, French, German, Japanese and Spanish
- Extensive multi-media technical resources to help you

- We investigate all quality concerns to ensure our products perform to the highest standards

If the product does not perform as described on this datasheet, we will offer a refund or replacement. For full details of the Abpromise, please visit <https://www.abcam.com/abpromise> or contact our technical team.

Terms and conditions

- Guarantee only valid for products bought direct from Abcam or one of our authorized distributors