

Product datasheet

Anti-KSR1 (phospho S404) antibody [EP2358Y] α b76248

RabMAb[®]

[2 Images](#)

Overview

Product name	Anti-KSR1 (phospho S404) antibody [EP2358Y]
Description	Rabbit monoclonal [EP2358Y] to KSR1 (phospho S404)
Host species	Rabbit
Tested applications	Suitable for: ICC/IF, WB Unsuitable for: Flow Cyt, IHC-P or IP
Species reactivity	Reacts with: Human
Immunogen	Synthetic phospho-peptide corresponding to residues surrounding Serine 404 of human KSR1
Positive control	WB: HeLa cell lysates, untreated or treated with Calyculin A IF: Sh-SY-5Y cells
General notes	Mouse, Rat: We have preliminary internal testing data to indicate this antibody may not react with these species. Please contact us for more information. Our RabMAb [®] technology is a patented hybridoma-based technology for making rabbit monoclonal antibodies. For details on our patents, please refer to RabMAb[®] patents

Properties

Form	Liquid
Storage instructions	Shipped at 4°C. Store at -20°C. Stable for 12 months at -20°C.
Storage buffer	pH: 7.20 Preservative: 0.05% Sodium azide Constituents: 0.1% BSA, 40% Glycerol, 9.85% Tris glycine, 50% Tissue culture supernatant
Purity	Tissue culture supernatant
Clonality	Monoclonal
Clone number	EP2358Y
Isotype	IgG

Applications

Our [Abpromise guarantee](#) covers the use of **ab76248** in the following tested applications.

The application notes include recommended starting dilutions; optimal dilutions/concentrations should be determined by the end user.

Application	Abreviews	Notes
ICC/IF		1/100 - 1/250.
WB		1/1000 - 1/10000. Predicted molecular weight: 102 kDa.

Application notes Is unsuitable for Flow Cyt, IHC-P or IP.

Target

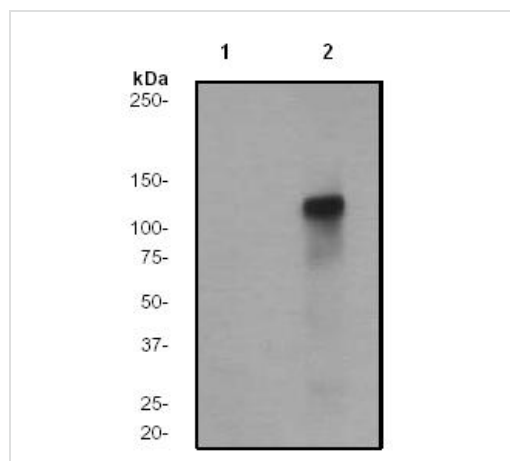
Function Location-regulated scaffolding protein connecting MEK to RAF. Promotes MEK and RAF phosphorylation and activity through assembly of an activated signaling complex. By itself, it has no demonstrated kinase activity.

Sequence similarities Belongs to the protein kinase superfamily. TKL Ser/Thr protein kinase family. Contains 1 phorbol-ester/DAG-type zinc finger. Contains 1 protein kinase domain.

Post-translational modifications Phosphorylated on Ser-309 and, to a higher extent, on Ser-404 by MARK3. Dephosphorylated on Ser-404 by PPP2CA. In resting cells, phosphorylated KSR1 is cytoplasmic and in stimulated cells, dephosphorylated KSR1 is membrane-associated.

Cellular localization Cytoplasm. Membrane. In unstimulated cells, where the phosphorylated form is bound to a 14-3-3 protein, sequestration in the cytoplasm occurs. Following growth factor treatment, the protein is free for membrane translocation, and it moves from the cytoplasm to the cell periphery.

Images



Western blot - Anti-KSR1 (phospho S404) antibody [EP2358Y] (ab76248)

All lanes : Anti-KSR1 (phospho S404) antibody [EP2358Y] (ab76248) at 1/2000 dilution

Lane 1 : HeLa cell lysate (untreated)

Lane 2 : HeLa cell lysate, treated with Calyculin A

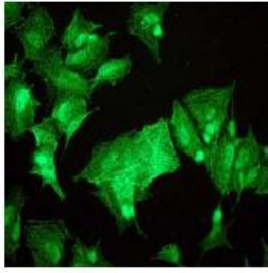
Lysates/proteins at 10 µg per lane.

Secondary

All lanes : goat anti-rabbit HRP labelled IgG at 1/1000 dilution

Predicted band size: 102 kDa

Observed band size: 110 kDa



Immunofluorescent staining of Sh-SY-5Y cells, using ab76248, at 1/100 dilution.

Immunocytochemistry/ Immunofluorescence - KSR1 (phospho S404) antibody [EP2358Y] (ab76248)

Please note: All products are "FOR RESEARCH USE ONLY AND ARE NOT INTENDED FOR DIAGNOSTIC OR THERAPEUTIC USE"

Our Abpromise to you: Quality guaranteed and expert technical support

- Replacement or refund for products not performing as stated on the datasheet
- Valid for 12 months from date of delivery
- Response to your inquiry within 24 hours
- We provide support in Chinese, English, French, German, Japanese and Spanish
- Extensive multi-media technical resources to help you
- We investigate all quality concerns to ensure our products perform to the highest standards

If the product does not perform as described on this datasheet, we will offer a refund or replacement. For full details of the Abpromise, please visit <https://www.abcam.com/abpromise> or contact our technical team.

Terms and conditions

- Guarantee only valid for products bought direct from Abcam or one of our authorized distributors