

Product datasheet

Anti-Kallikrein 2 antibody [EPR6676] ab124899

Recombinant RabMAb

2 Images

Overview

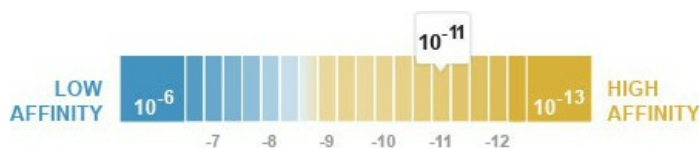
<b>Product name</b>	Anti-Kallikrein 2 antibody [EPR6676]
<b>Description</b>	Rabbit monoclonal [EPR6676] to Kallikrein 2
<b>Host species</b>	Rabbit
<b>Tested applications</b>	<b>Suitable for:</b> WB, ICC/IF <b>Unsuitable for:</b> Flow Cyt, IHC-P or IP
<b>Species reactivity</b>	<b>Reacts with:</b> Mouse, Rat, Human
<b>Immunogen</b>	Synthetic peptide within Human Kallikrein 2 aa 200-300. The exact sequence is proprietary.
<b>Positive control</b>	LnCaP, MOLT4, Human seminoma and PC3 lysates.
<b>General notes</b>	

Our RabMAb<sup>®</sup> technology is a patented hybridoma-based technology for making rabbit monoclonal antibodies. For details on our patents, please refer to [RabMAb<sup>®</sup> patents](#)

This product is a recombinant rabbit monoclonal antibody.

Properties

<b>Form</b>	Liquid
<b>Storage instructions</b>	Shipped at 4°C. Store at -20°C. Stable for 12 months at -20°C.
<b>Dissociation constant (K<sub>D</sub>)</b>	K <sub>D</sub> = 8.78 x 10 <sup>-11</sup> M



[Learn more about K<sub>D</sub>](#)

<b>Storage buffer</b>	pH: 7.20 Preservative: 0.05% Sodium azide Constituents: 40% Glycerol, 9.85% Tris glycine, 50% Tissue culture supernatant
<b>Purity</b>	Tissue culture supernatant
<b>Clonality</b>	Monoclonal

Clone number EPR6676

Isotype IgG

## Applications

Our [Abpromise guarantee](#) covers the use of **ab124899** in the following tested applications.

The application notes include recommended starting dilutions; optimal dilutions/concentrations should be determined by the end user.

Application	Abreviews	Notes
WB		1/1000 - 1/10000. Detects a band of approximately 33 kDa (predicted molecular weight: 29 kDa).
ICC/IF		1/50 - 1/100.

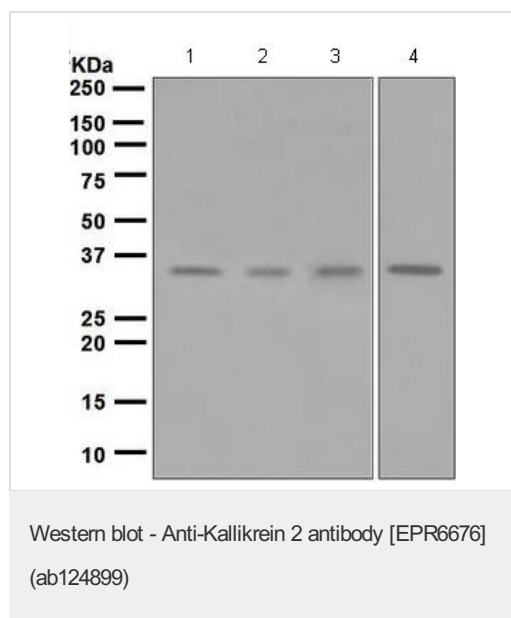
**Application notes** Is unsuitable for Flow Cyt, IHC-P or IP.

## Target

**Function** Glandular kallikreins cleave Met-Lys and Arg-Ser bonds in kininogen to release Lys-bradykinin.

**Sequence similarities** Belongs to the peptidase S1 family. Kallikrein subfamily.  
Contains 1 peptidase S1 domain.

## Images



**All lanes** : Anti-Kallikrein 2 antibody  
[EPR6676] (ab124899) at 1/1000 dilution

**Lane 1** : LnCaP lysate

**Lane 2** : MOLT4 lysate

**Lane 3** : Human seminoma lysate

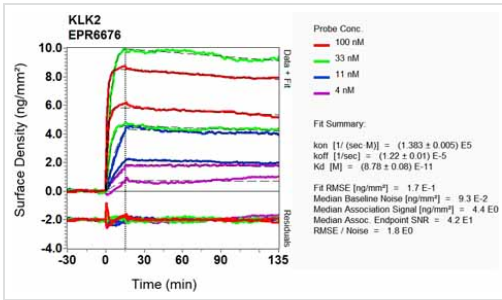
**Lane 4** : PC3 lysate

Lysates/proteins at 10 µg per lane.

### Secondary

**All lanes** : Goat anti-Rabbit HRP at 1/2000 dilution

**Predicted band size:** 29 kDa



Other - Anti-Kallikrein 2 antibody [EPR6676]  
(ab124899)

Equilibrium dissociation constant ( $K_D$ )

Learn more about  $K_D$

[Click here to learn more about  \$K\_D\$](#)

**Please note:** All products are "FOR RESEARCH USE ONLY AND ARE NOT INTENDED FOR DIAGNOSTIC OR THERAPEUTIC USE"

### Our Abpromise to you: Quality guaranteed and expert technical support

- Replacement or refund for products not performing as stated on the datasheet
- Valid for 12 months from date of delivery
- Response to your inquiry within 24 hours
- We provide support in Chinese, English, French, German, Japanese and Spanish
- Extensive multi-media technical resources to help you
- We investigate all quality concerns to ensure our products perform to the highest standards

If the product does not perform as described on this datasheet, we will offer a refund or replacement. For full details of the Abpromise, please visit <https://www.abcam.com/abpromise> or contact our technical team.

### Terms and conditions

- Guarantee only valid for products bought direct from Abcam or one of our authorized distributors