

## Product datasheet

# Anti-LAMP1 antibody ab19294

★★★★★ 2 Abreviews 4 References 2 Images

### Overview

---

<b>Product name</b>	Anti-LAMP1 antibody
<b>Description</b>	Rabbit polyclonal to LAMP1
<b>Host species</b>	Rabbit
<b>Tested applications</b>	<b>Suitable for:</b> IHC-P, ICC/IF
<b>Species reactivity</b>	<b>Reacts with:</b> Human <b>Predicted to work with:</b> Mouse, Rat
<b>Immunogen</b>	Synthetic peptide: C-KRSHAGYQTI , corresponding to amino acids 407-416 of Human LAMP1  <a href="#">Run BLAST with</a> <a href="#">Run BLAST with</a>
<b>Positive control</b>	HeLa cells. IHC-P: FFPE human lung tissue sections.

### Properties

---

<b>Form</b>	Liquid
<b>Storage instructions</b>	Shipped at 4°C. Upon delivery aliquot and store at -20°C. Avoid freeze / thaw cycles.
<b>Storage buffer</b>	pH: 7.40 Preservative: 0.1% Sodium azide Constituents: 0.24% Tris, 0.75% Glycine
<b>Purity</b>	Immunogen affinity purified
<b>Clonality</b>	Polyclonal
<b>Isotype</b>	IgG

### Applications

---

Our [Abpromise guarantee](#) covers the use of **ab19294** in the following tested applications.

The application notes include recommended starting dilutions; optimal dilutions/concentrations should be determined by the end user.

Application	Abreviews	Notes
-------------	-----------	-------

IHC-P

ICC/IF



**Application notes**

ICC/IF: Use at a concentration of 5 µg/ml.

Not yet tested in other applications.

Optimal dilutions/concentrations should be determined by the end user.

**Target**

**Function**

Presents carbohydrate ligands to selectins. Also implicated in tumor cell metastasis.

**Sequence similarities**

Belongs to the LAMP family.

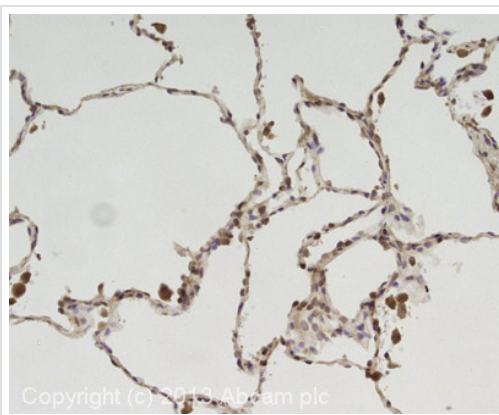
**Post-translational modifications**

O- and N-glycosylated; some of the 18 N-linked glycans are polylectosaminoglycans.

**Cellular localization**

Cell membrane. Endosome membrane. Lysosome membrane. This protein shuttles between lysosomes, endosomes, and the plasma membrane.

**Images**

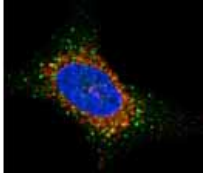


Copyright (c) 2013, Abcam plc

Immunohistochemistry (Formalin/PFA-fixed paraffin-embedded sections) - Anti-LAMP1 antibody (ab19294)

IHC image of LAMP1 staining in human lung formalin fixed paraffin embedded tissue section, performed on a Leica Bond system using the standard protocol F. The section was pre-treated using heat mediated antigen retrieval with sodium citrate buffer (pH6, epitope retrieval solution 1) for 20 mins. The section was then incubated with ab19294, 5µg/ml, for 15 mins at room temperature and detected using an HRP conjugated compact polymer system. DAB was used as the chromogen. The section was then counterstained with haematoxylin and mounted with DPX.

For other IHC staining systems (automated and non-automated) customers should optimize variable parameters such as antigen retrieval conditions, primary antibody concentration and antibody incubation times.



Immunocytochemistry/ Immunofluorescence - Anti-LAMP1 antibody (ab19294)

ab19294 has been successfully used in immunofluorescence procedures. ab19294 shows perinuclear staining in HeLa cells (used at 5 µg/ml). The staining is shown in red. Nuclear staining is shown in blue.

**Please note:** All products are "FOR RESEARCH USE ONLY AND ARE NOT INTENDED FOR DIAGNOSTIC OR THERAPEUTIC USE"

### Our Abpromise to you: Quality guaranteed and expert technical support

- Replacement or refund for products not performing as stated on the datasheet
- Valid for 12 months from date of delivery
- Response to your inquiry within 24 hours
- We provide support in Chinese, English, French, German, Japanese and Spanish
- Extensive multi-media technical resources to help you
- We investigate all quality concerns to ensure our products perform to the highest standards

If the product does not perform as described on this datasheet, we will offer a refund or replacement. For full details of the Abpromise, please visit <https://www.abcam.com/abpromise> or contact our technical team.

### Terms and conditions

- Guarantee only valid for products bought direct from Abcam or one of our authorized distributors