

Product datasheet

Anti-LAP1 antibody [RL13] ab2737

6 References 4 Images

Overview

Product name	Anti-LAP1 antibody [RL13]
Description	Mouse monoclonal [RL13] to LAP1
Host species	Mouse
Tested applications	Suitable for: IHC-P, ICC/IF, IP, WB
Species reactivity	Reacts with: Mouse, Rat, Human
Immunogen	Other Immunogen Type corresponding to Rat LAP1. This is a Pore complex-lamina fraction isolated from rat liver nuclear envelopes.

Properties

Form	Liquid
Storage instructions	Shipped at 4°C. Store at +4°C short term (1-2 weeks). Upon delivery aliquot. Store at -20°C or -80°C. Avoid freeze / thaw cycle.
Storage buffer	Preservative: 0.05% Sodium azide Constituent: PBS
Purity	IgG fraction
Clonality	Monoclonal
Clone number	RL13
Isotype	IgG1

Applications

Our [Abpromise guarantee](#) covers the use of **ab2737** in the following tested applications.

The application notes include recommended starting dilutions; optimal dilutions/concentrations should be determined by the end user.

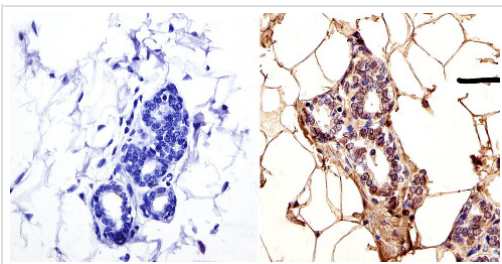
Application	Abreviews	Notes
IHC-P		1/20 - 1/50.
ICC/IF		1/100.

Application	Abreviews	Notes
IP		Use at an assay dependent concentration.
WB		1/200.

Target

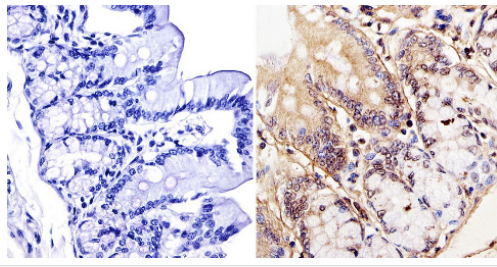
Function	Required for normal synaptic spine architecture and function. Necessary for DISC1 and GRM5 localization to postsynaptic density complexes and for both N-methyl D-aspartate receptor-dependent and metabotropic glutamate receptor-dependent long term depression.
Tissue specificity	Brain-specific. Isoform 3 is ubiquitously expressed.
Sequence similarities	Belongs to the LAP (LRR and PDZ) protein family. Contains 17 LRR (leucine-rich) repeats. Contains 1 PDZ (DHR) domain.
Cellular localization	Cytoplasm. Cell junction, synapse, postsynaptic cell membrane, postsynaptic density.

Images



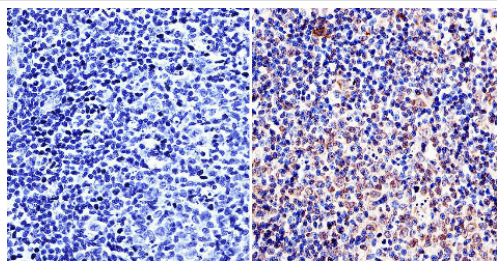
Immunohistochemistry (Formalin/PFA-fixed paraffin-embedded sections) - Anti-LAP1 antibody [RL13] (ab2737)

Immunohistochemistry (Formalin/PFA-fixed paraffin-embedded sections) was performed on rat breast tissue. Antigen retrieval was performed using 10mM sodium citrate followed by microwave treatment for 8-15 minutes. Endogenous peroxidases were blocked in 3% H₂O₂-methanol for 15 minutes and tissues were blocked in 3% BSA-PBS for 30 minutes at room temperature. Cells were incubated with ab2737 (1:50) overnight in a humidified chamber. Tissues were washed in PBST and detection was performed using a secondary antibody conjugated to HRP. DAB staining buffer was applied and tissues were counterstained with hematoxylin and prepped for mounting. Images were taken at 40X magnification.



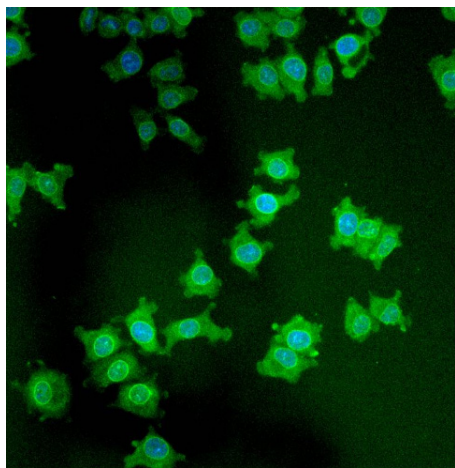
Immunohistochemistry (Formalin/PFA-fixed paraffin-embedded sections) - Anti-LAP1 antibody [RL13] (ab2737)

Immunohistochemistry (Formalin/PFA-fixed paraffin-embedded sections) was performed on rat colon tissue. Antigen retrieved was performed using 10mM sodium citrate followed by microwave treatment for 8-15 minutes. Endogenous peroxidases were blocked in 3% H₂O₂-methanol for 15 minutes and tissues were blocked in 3% BSA-PBS for 30 minutes at room temperature. Cells were incubated with ab2737 (1:50) overnight in a humidified chamber. Tissues were washed in PBST and detection was performed using a secondary antibody conjugated to HRP. DAB staining buffer was applied and tissues were counterstained with hematoxylin and prepped for mounting. Images were taken at 40X magnification.



Immunohistochemistry (Formalin/PFA-fixed paraffin-embedded sections) - Anti-LAP1 antibody [RL13] (ab2737)

Immunohistochemistry (Formalin/PFA-fixed paraffin-embedded sections) was performed on rat lymph node tissue. Antigen retrieved was performed using 10mM sodium citrate followed by microwave treatment for 8-15 minutes. Endogenous peroxidases were blocked in 3% H₂O₂-methanol for 15 minutes and tissues were blocked in 3% BSA-PBS for 30 minutes at room temperature. Cells were incubated with ab2737 (1:50) overnight in a humidified chamber. Tissues were washed in PBST and detection was performed using a secondary antibody conjugated to HRP. DAB staining buffer was applied and tissues were counterstained with hematoxylin and prepped for mounting. Images were taken at 40X magnification.



Immunocytochemistry/Immunofluorescence analysis of LAP1 using ab2737 shows staining in NS-1 Cells.

Immunocytochemistry/ Immunofluorescence - Anti-LAP1 antibody [RL13] (ab2737)

Please note: All products are "FOR RESEARCH USE ONLY AND ARE NOT INTENDED FOR DIAGNOSTIC OR THERAPEUTIC USE"

Our Abpromise to you: Quality guaranteed and expert technical support

- Replacement or refund for products not performing as stated on the datasheet
- Valid for 12 months from date of delivery
- Response to your inquiry within 24 hours
- We provide support in Chinese, English, French, German, Japanese and Spanish
- Extensive multi-media technical resources to help you
- We investigate all quality concerns to ensure our products perform to the highest standards

If the product does not perform as described on this datasheet, we will offer a refund or replacement. For full details of the Abpromise, please visit <https://www.abcam.com/abpromise> or contact our technical team.

Terms and conditions

- Guarantee only valid for products bought direct from Abcam or one of our authorized distributors