


## Product datasheet

# Anti-LRP3 antibody ab115197

1 Image

### Overview

---

<b>Product name</b>	Anti-LRP3 antibody
<b>Description</b>	Rabbit polyclonal to LRP3
<b>Host species</b>	Rabbit
<b>Tested applications</b>	<b>Suitable for:</b> IHC-P, ELISA
<b>Species reactivity</b>	<b>Reacts with:</b> Human <b>Predicted to work with:</b> Monkey 
<b>Immunogen</b>	Synthetic peptide corresponding to Human LRP3 aa 676-693 (C terminal) conjugated to Keyhole Limpet Haemocyanin (KLH). Sequence: EVGPSGPPLPSGLRDPEC  <a href="#">Run BLAST with</a> <a href="#">Run BLAST with</a>
<b>Positive control</b>	Human skin tissue.

### Properties

---

<b>Form</b>	Liquid
<b>Storage instructions</b>	Shipped at 4°C. Store at +4°C short term (1-2 weeks). Upon delivery aliquot. Store at -20°C long term.
<b>Storage buffer</b>	Preservative: 0.1% Sodium azide Constituent: 99% PBS
<b>Purity</b>	Protein G purified
<b>Clonality</b>	Polyclonal
<b>Isotype</b>	IgG

### Applications

---

Our [Abpromise guarantee](#) covers the use of **ab115197** in the following tested applications.

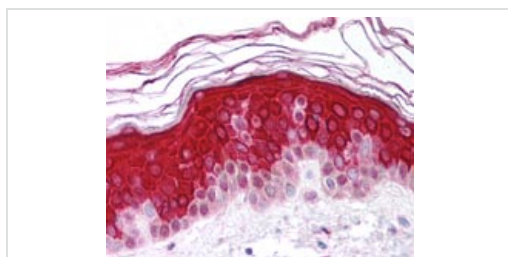
The application notes include recommended starting dilutions; optimal dilutions/concentrations should be determined by the end user.

Application	Abreviews	Notes
IHC-P		Use a concentration of 10 µg/ml. Perform heat mediated antigen retrieval with citrate buffer pH 6 before commencing with IHC staining protocol.
ELISA		1/1000.

## Target

<b>Function</b>	Probable receptor, which may be involved in the internalization of lipophilic molecules and/or signal transduction. Its precise role is however unclear, since it does not bind to very low density lipoprotein (VLDL) or to LRPAP1 in vitro.
<b>Tissue specificity</b>	Widely expressed. Highly expressed in skeletal muscle and ovary. Expressed at intermediate level in heart, brain, liver, pancreas, prostate and small intestine. Weakly expressed in testis, colon and leukocyte.
<b>Sequence similarities</b>	Belongs to the LDLR family. Contains 2 CUB domains. Contains 4 LDL-receptor class A domains.
<b>Cellular localization</b>	Membrane. Membrane > coated pit.

## Images



Immunohistochemistry Image of Human Skin (formalin-fixed, paraffin-embedded) stained with LRP3 antibody (ab115197) at 10 µg/ml followed by biotinylated goat anti-rabbit IgG secondary antibody, alkaline phosphatase-streptavidin and chromogen.

Immunohistochemistry (Formalin/PFA-fixed paraffin-embedded sections) - Anti-LRP3 antibody (ab115197)

**Please note:** All products are "FOR RESEARCH USE ONLY AND ARE NOT INTENDED FOR DIAGNOSTIC OR THERAPEUTIC USE"

## Our Abpromise to you: Quality guaranteed and expert technical support

- Replacement or refund for products not performing as stated on the datasheet
- Valid for 12 months from date of delivery
- Response to your inquiry within 24 hours
- We provide support in Chinese, English, French, German, Japanese and Spanish
- Extensive multi-media technical resources to help you
- We investigate all quality concerns to ensure our products perform to the highest standards

If the product does not perform as described on this datasheet, we will offer a refund or replacement. For full details of the Abpromise, please visit <https://www.abcam.com/abpromise> or contact our technical team.

## Terms and conditions

---

- Guarantee only valid for products bought direct from Abcam or one of our authorized distributors