

Product datasheet

Anti-LRRC26 antibody ab124181

1 References 1 Image

Overview

Product name	Anti-LRRC26 antibody
Description	Rabbit polyclonal to LRRC26
Host species	Rabbit
Tested applications	Suitable for: WB
Species reactivity	Reacts with: Human
Immunogen	Synthetic peptide conjugated to KLH, corresponding to a region within C terminal amino acids 288-319 of Human LRRC26 (NP_001013675.1).
Positive control	A549 cell line lysate
General notes	Store in small aliquots and prevent freeze-thaw cycles

Properties

Form	Liquid
Storage instructions	Shipped at 4°C. Store at 4°C (up to 6 months). Store at -20°C long term.
Storage buffer	Preservative: 0.09% Sodium azide Constituent: 99% PBS
Purity	Immunogen affinity purified
Purification notes	This antibody is purified through a protein A column, followed by peptide affinity purification.
Clonality	Polyclonal
Isotype	IgG

Applications

Our [Abpromise guarantee](#) covers the use of **ab124181** in the following tested applications.

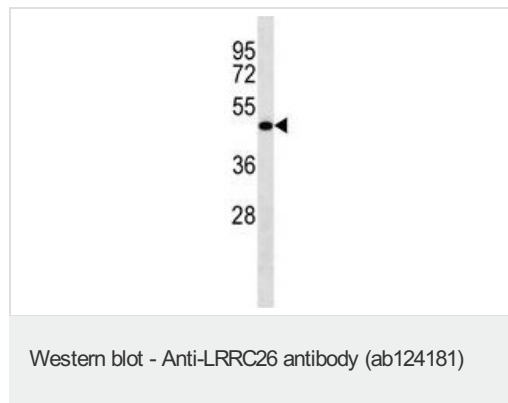
The application notes include recommended starting dilutions; optimal dilutions/concentrations should be determined by the end user.

Application	Abreviews	Notes
WB		1/100 - 1/500. Predicted molecular weight: 34 kDa.

Target

Function	Auxiliary protein of the large-conductance, voltage and calcium-activated potassium channel (BK alpha). Required for the conversion of BK alpha channels from a high-voltage to a low-voltage activated channel type in non-excitable cells. These are characterized by negative membrane voltages and constant low levels of calcium.
Tissue specificity	Isoform 1 is expressed highly in normal prostate and salivary gland, very weakly in colon, pancreas, and intestine, and not at all in other tissues. Isoform 1 is expressed highly in many cancer cell lines and in breast cancer, pancreatic cancer and colon cancer. Isoform 2 is expressed in cancer cell lines.
Sequence similarities	Contains 5 LRR (leucine-rich) repeats. Contains 1 LRRCT domain. Contains 1 LRRNT domain.
Domain	The transmembrane domain is necessary for interaction with KCNMA1.
Cellular localization	Membrane. Cytoplasm > cytoskeleton. Although predicted to be a single-pass type I membrane protein, this protein localizes to the cytoplasm when expressed at high levels.
Form	There are 2 isoforms produced by alternative splicing. Isoform 1 = L-CAPC. Isoform 2 = S-CAPC and does not contain the immunogen sequence.

Images



Anti-LRRC26 antibody (ab124181) at 1/100 dilution + A549 cell line lysate at 35 µg

Predicted band size: 34 kDa

Please note: All products are "FOR RESEARCH USE ONLY AND ARE NOT INTENDED FOR DIAGNOSTIC OR THERAPEUTIC USE"

Our Abpromise to you: Quality guaranteed and expert technical support

- Replacement or refund for products not performing as stated on the datasheet
- Valid for 12 months from date of delivery
- Response to your inquiry within 24 hours
- We provide support in Chinese, English, French, German, Japanese and Spanish
- Extensive multi-media technical resources to help you
- We investigate all quality concerns to ensure our products perform to the highest standards

If the product does not perform as described on this datasheet, we will offer a refund or replacement. For full details of the Abpromise, please visit <https://www.abcam.com/abpromise> or contact our technical team.

Terms and conditions

- Guarantee only valid for products bought direct from Abcam or one of our authorized distributors