

Product datasheet

Anti-MACROD1 antibody ab122688

1 Abreviews 2 References 2 Images

Overview

| | |
|----------------------------|--|
| Product name | Anti-MACROD1 antibody |
| Description | Rabbit polyclonal to MACROD1 |
| Host species | Rabbit |
| Tested applications | Suitable for: ICC/IF, IHC-P |
| Species reactivity | Reacts with: Human |
| Immunogen | antigen sequence: SFLKGLSDKQ REEHYFCKDF VRLKKIPTWK EMAKGVAVKV EEPYKDKQ LNEKISLLRS DITKLEV, corresponding to amino acids of Human MACROD1. Run BLAST with ExPASy Run BLAST with NCBI |
| Positive control | Human colon tissue. |

Properties

| | |
|-----------------------------|---|
| Form | Liquid |
| Storage instructions | Shipped at 4°C. Upon delivery aliquot and store at -20°C. Avoid freeze / thaw cycles. |
| Storage buffer | pH: 7.20 Preservative: 0.02% Sodium azide Constituents: 59% PBS, 40% Glycerol |
| Purity | Immunogen affinity purified |
| Clonality | Polyclonal |
| Isotype | IgG |

Applications

Our [Abpromise guarantee](#) covers the use of **ab122688** in the following tested applications.

The application notes include recommended starting dilutions; optimal dilutions/concentrations should be determined by the end user.

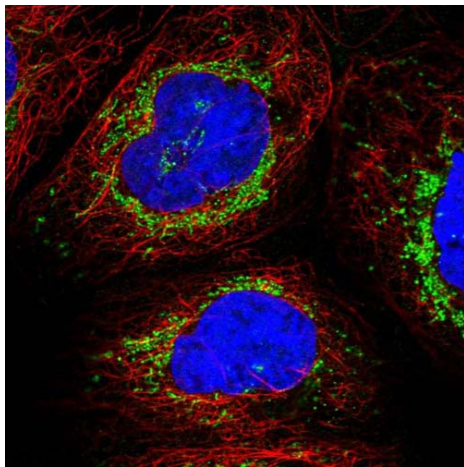
| Application | Abreviews | Notes |
|-------------|-----------|--|
| ICC/IF | | Use a concentration of 1 - 4 µg/ml. Recommend PFA Fixation and Triton X-100 treatment |

| Application | Abreviews | Notes |
|-------------|-----------|---|
| IHC-P | | 1/200 - 1/500. Perform heat mediated antigen retrieval with citrate buffer pH 6 before commencing with IHC staining protocol. |

Target

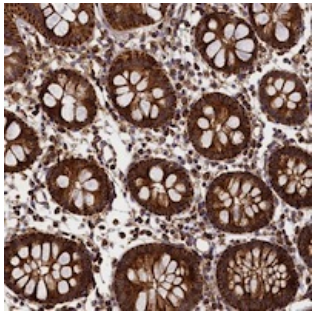
| | |
|-------------------------------|--|
| Function | Plays a role in estrogen signaling. Binds to androgen receptor (AR) and amplifies the transactivation function of AR in response to androgen. May play an important role in carcinogenesis and/or progression of hormone-dependent cancers by feed-forward mechanism that activates ESR1 transactivation. Could be an ESR1 coactivator, providing a positive feedback regulatory loop for ESR1 signal transduction. Could be involved in invasive growth by down-regulating CDH1 in endometrial cancer cells. Enhances ESR1-mediated transcription activity. |
| Involvement in disease | Note=A chromosomal aberration involving MACROD1 is found in acute leukemia. Translocation t(11;21)(q13;q22) that forms a RUNX1-MACROD1 fusion protein. |
| Sequence similarities | Contains 1 Macro domain. |

Images



Immunofluorescent staining of Human cell line A-431 shows positivity in mitochondria. Recommended concentration of ab122688 1-4 µg/ml. Cells treated with PFA/Triton X-100.

Immunocytochemistry/ Immunofluorescence - Anti-MACROD1 antibody (ab122688)



ab122688, at 1/200 dilution, staining
MACROD1 in paraffin-embedded Human
colon tissue by Immunohistochemistry.

Immunohistochemistry (Formalin/PFA-fixed paraffin-
embedded sections) - Anti-MACROD1 antibody
(ab122688)

Please note: All products are "FOR RESEARCH USE ONLY AND ARE NOT INTENDED FOR DIAGNOSTIC OR THERAPEUTIC USE"

Our Abpromise to you: Quality guaranteed and expert technical support

- Replacement or refund for products not performing as stated on the datasheet
- Valid for 12 months from date of delivery
- Response to your inquiry within 24 hours
- We provide support in Chinese, English, French, German, Japanese and Spanish
- Extensive multi-media technical resources to help you
- We investigate all quality concerns to ensure our products perform to the highest standards

If the product does not perform as described on this datasheet, we will offer a refund or replacement. For full details of the Abpromise, please visit <https://www.abcam.com/abpromise> or contact our technical team.

Terms and conditions

- Guarantee only valid for products bought direct from Abcam or one of our authorized distributors