

## Product datasheet

# Anti-MAP1LC3A antibody ab62720

★★★★★ 5 Abreviews 10 References 1 Image

### Overview

---

<b>Product name</b>	Anti-MAP1LC3A antibody
<b>Description</b>	Rabbit polyclonal to MAP1LC3A
<b>Host species</b>	Rabbit
<b>Tested applications</b>	<b>Suitable for:</b> WB, IP, ICC/IF
<b>Species reactivity</b>	<b>Reacts with:</b> Mouse, Rat, Human
<b>Immunogen</b>	Synthetic peptide: PSDRPFKQRRSFADR conjugated to KLH by a Cysteine residue linker, corresponding to amino acids 2-15 of Human MAP1LC3A  <div style="display: flex; justify-content: flex-end; gap: 20px;"> <span> <a href="#">Run BLAST with</a></span> <span> <a href="#">Run BLAST with</a></span> </div>
<b>Positive control</b>	Whole brain. U87 cells.

### Properties

---

<b>Form</b>	Liquid
<b>Storage instructions</b>	Shipped at 4°C. Store at +4°C short term (1-2 weeks). Upon delivery aliquot. Store at -20°C or -80°C. Avoid freeze / thaw cycle.
<b>Storage buffer</b>	pH: 7.40 Preservative: 0.097% Sodium azide Constituent: 0.0268% PBS
<b>Purity</b>	Immunogen affinity purified
<b>Clonality</b>	Polyclonal
<b>Isotype</b>	IgG

### Applications

---

Our [Abpromise guarantee](#) covers the use of **ab62720** in the following tested applications.

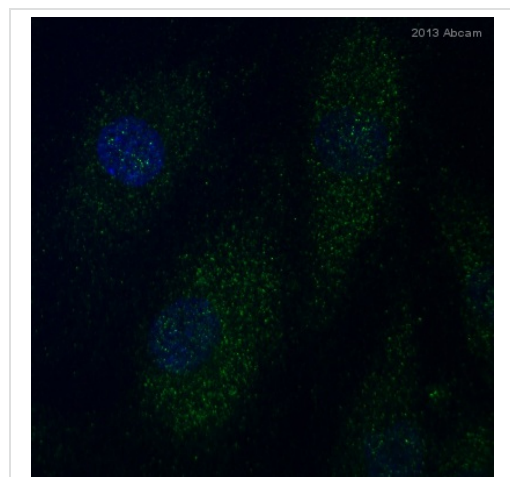
The application notes include recommended starting dilutions; optimal dilutions/concentrations should be determined by the end user.

Application	Abreviews	Notes
WB	★★★★☆	Use a concentration of 0.5 - 1 µg/ml. Detects a band of approximately 16-18 kDa (predicted molecular weight: 16-18 kDa).
IP		Use at an assay dependent concentration.
ICC/IF	★★★★★	Use at an assay dependent concentration.

## Target

<b>Function</b>	Probably involved in formation of autophagosomal vacuoles (autophagosomes).
<b>Tissue specificity</b>	Most abundant in heart, brain, liver, skeletal muscle and testis but absent in thymus and peripheral blood leukocytes.
<b>Sequence similarities</b>	Belongs to the MAP1 LC3 family.
<b>Post-translational modifications</b>	The precursor molecule is cleaved by APG4B/ATG4B to form the cytosolic form, LC3-I. This is activated by APG7L/ATG7, transferred to ATG3 and conjugated to phospholipid to form the membrane-bound form, LC3-II.
<b>Cellular localization</b>	Cytoplasm > cytoskeleton. Endomembrane system. Cytoplasmic vesicle > autophagosome membrane. LC3-II binds to the autophagic membranes.

## Images



ab62720 staining MAP1LC3A in Human HuVEC by ICC/IF (Immunocytochemistry/immunofluorescence). Cells were fixed with paraformaldehyde, permeabilized with 0.1% Triton X-100 pH 7.4 for 5 minutes and blocked with 5% BSA for 20 minutes at room temperature. Samples were incubated with primary antibody (1/500 in PBS) for 1 hour. A CF488A-conjugated Donkey anti-rabbit IgG polyclonal (1/500) was used as the secondary antibody.

Immunocytochemistry/ Immunofluorescence - Anti-MAP1LC3A antibody (ab62720)

This image is courtesy of an Abreview submitted by Dimitra Kalamida

**Please note:** All products are "FOR RESEARCH USE ONLY AND ARE NOT INTENDED FOR DIAGNOSTIC OR THERAPEUTIC USE"

## Our Abpromise to you: Quality guaranteed and expert technical support

- Replacement or refund for products not performing as stated on the datasheet

- Valid for 12 months from date of delivery
- Response to your inquiry within 24 hours
  
- We provide support in Chinese, English, French, German, Japanese and Spanish
- Extensive multi-media technical resources to help you
- We investigate all quality concerns to ensure our products perform to the highest standards

If the product does not perform as described on this datasheet, we will offer a refund or replacement. For full details of the Abpromise, please visit <https://www.abcam.com/abpromise> or contact our technical team.

## **Terms and conditions**

---

- Guarantee only valid for products bought direct from Abcam or one of our authorized distributors