

Product datasheet

Anti-MAP3K8 antibody ab51208

[2 Images](#)

Overview

Product name	Anti-MAP3K8 antibody
Description	Rabbit polyclonal to MAP3K8
Host species	Rabbit
Tested applications	Suitable for: IHC-P, ELISA, WB
Species reactivity	Reacts with: Human Predicted to work with: Mouse, Rat
Immunogen	Synthesized non-phosphopeptide derived from human MAP3K8 around the phosphorylation site of threonine 290 (R-G-T ^P -E-I).
Positive control	Human brain tissue; extracts from 293 cells treated with LPS

Properties

Form	Liquid
Storage instructions	Shipped at 4°C. Upon delivery aliquot and store at -20°C. Avoid freeze / thaw cycles.
Storage buffer	Preservative: 0.02% Sodium Azide Constituents: 50% Glycerol, PBS (without Mg ²⁺ and Ca ²⁺), 150mM Sodium chloride, pH 7.4
Purity	Immunogen affinity purified
Clonality	Polyclonal
Isotype	IgG

Applications

Our [Abpromise guarantee](#) covers the use of **ab51208** in the following tested applications.

The application notes include recommended starting dilutions; optimal dilutions/concentrations should be determined by the end user.

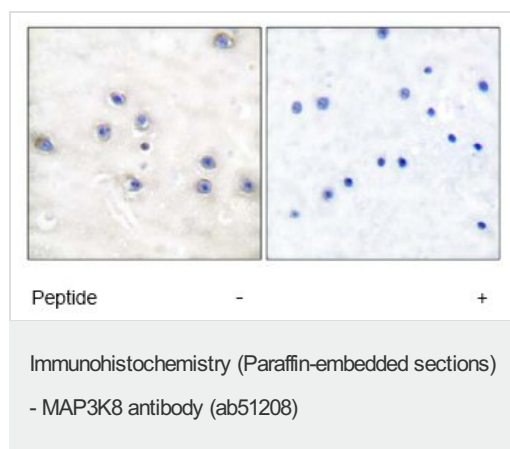
Application	Abreviews	Notes
IHC-P		Use at an assay dependent concentration.
ELISA		1/40000.

Application	Abreviews	Notes
WB		1/300 - 1/1000. Predicted molecular weight: 53 kDa.

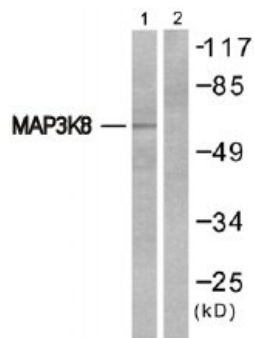
Target

Function	Required for TLR4 activation of the MEK/ERK pathway. Able to activate NF-kappa-B 1 by stimulating proteasome-mediated proteolysis of NF-kappa-B 1/p105. Plays a role in the cell cycle. The longer form has some transforming activity, although it is much weaker than the activated cot oncoprotein.
Tissue specificity	Expressed in several normal tissues and human tumor-derived cell lines.
Sequence similarities	Belongs to the protein kinase superfamily. STE Ser/Thr protein kinase family. MAP kinase kinase kinase subfamily. Contains 1 protein kinase domain.
Developmental stage	Isoform 1 is activated specifically during the S and G2/M phases of the cell cycle.
Post-translational modifications	Autophosphorylated. Isoform 1 undergoes phosphorylation mainly on Ser residues, and isoform 2 on both Ser and Thr residues.
Cellular localization	Cytoplasm.

Images



Immunohistochemical analysis of paraffin-embedded human brain tissue using ab51208, with and without immunising peptide.



Western blot - MAP3K8 antibody (ab51208)

All lanes : Anti-MAP3K8 antibody (ab51208)

Lane 1 : 293 cells treated with LPS (100ng/ml, 30min) with no immunizing peptide

Lane 2 : 293 cells treated with LPS (100ng/ml, 30min) with immunizing peptide

Predicted band size: 53 kDa

Observed band size: ~60 kDa

Please note: All products are "FOR RESEARCH USE ONLY AND ARE NOT INTENDED FOR DIAGNOSTIC OR THERAPEUTIC USE"

Our Abpromise to you: Quality guaranteed and expert technical support

- Replacement or refund for products not performing as stated on the datasheet
- Valid for 12 months from date of delivery
- Response to your inquiry within 24 hours
- We provide support in Chinese, English, French, German, Japanese and Spanish
- Extensive multi-media technical resources to help you
- We investigate all quality concerns to ensure our products perform to the highest standards

If the product does not perform as described on this datasheet, we will offer a refund or replacement. For full details of the Abpromise, please visit <https://www.abcam.com/abpromise> or contact our technical team.

Terms and conditions

- Guarantee only valid for products bought direct from Abcam or one of our authorized distributors