

## Product datasheet

# Anti-MATN1 antibody ab106384

[3 Images](#)

### Overview

|                            |  |
|----------------------------|--|
| <b>Product name</b>        | Anti-MATN1 antibody  |
| <b>Description</b>         | Rabbit polyclonal to MATN1   |
| <b>Host species</b>        | Rabbit   |
| <b>Tested applications</b> | <b>Suitable for:</b> ICC/IF, WB, IHC-P   |
| <b>Species reactivity</b>  | <b>Reacts with:</b> Mouse, Rat, Human  |
| <b>Immunogen</b>           | A 13 amino acid peptide from near the carboxy terminus of Human MATN1 (NP_002370). |
| <b>Positive control</b>    | Rat liver tissue lysate Human liver tissue   |

### Properties

|                             |  |
|-----------------------------|--|
| <b>Form</b>                 | Liquid   |
| <b>Storage instructions</b> | Shipped at 4°C. Store at 4°C (stable for up to 12 months). |
| <b>Storage buffer</b>       | Preservative: 0.02% Sodium Azide<br>Constituents: PBS      |
| <b>Purity</b>               | Immunogen affinity purified                                |
| <b>Clonality</b>            | Polyclonal   |
| <b>Isotype</b>              | IgG  |

### Applications

Our [Abpromise guarantee](#) covers the use of **ab106384** in the following tested applications.

The application notes include recommended starting dilutions; optimal dilutions/concentrations should be determined by the end user.

| Application | Abreviews | Notes   |
|-------------|-----------|---|
| ICC/IF      |           | Use a concentration of 20 µg/ml.  |
| WB          |           | Use a concentration of 1 - 2 µg/ml. Predicted molecular weight: 54 kDa. |
| IHC-P       |           | Use a concentration of 5 µg/ml.   |

## Target

---

**Function** Cartilage matrix protein is a major component of the extracellular matrix of non-articular cartilage. It binds to collagen.

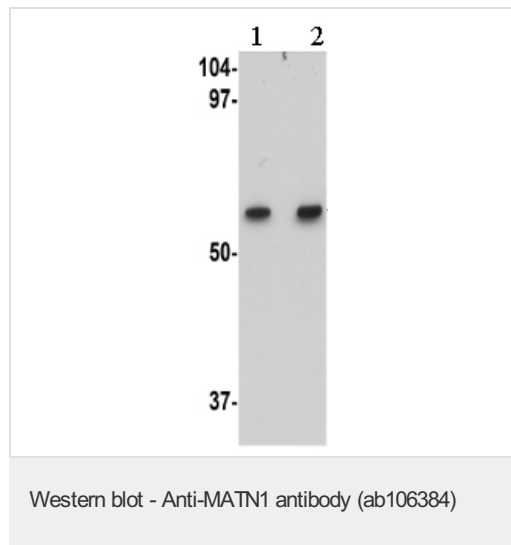
**Sequence similarities** Contains 1 EGF-like domain.  
Contains 2 VWFA domains.

**Cellular localization** Secreted, extracellular space, extracellular matrix.

---

## Images

---



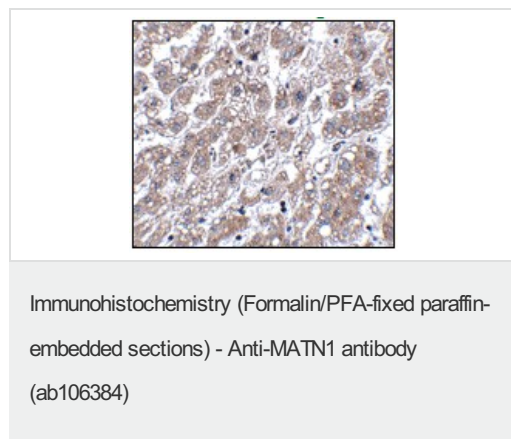
**Lane 1** : Anti-MATN1 antibody (ab106384) at 1 µg/ml

**Lane 2** : Anti-MATN1 antibody (ab106384) at 2 µg/ml

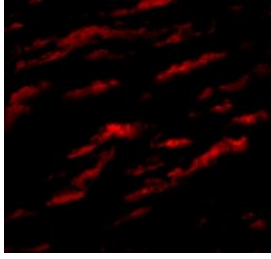
**All lanes** : Rat liver tissue lysate

Lysates/proteins at 15 µg per lane.

**Predicted band size:** 54 kDa



Immunohistochemistry of MATN1 in Human liver tissue using ab106384 at 5 µg/ml.



Immunofluorescence of MATN1 in Human  
Liver cells using ab106384 at 20 ug/ml.

Immunocytochemistry/ Immunofluorescence - Anti-  
MATN1 antibody (ab106384)

**Please note:** All products are "FOR RESEARCH USE ONLY AND ARE NOT INTENDED FOR DIAGNOSTIC OR THERAPEUTIC USE"

### Our Abpromise to you: Quality guaranteed and expert technical support

---

- Replacement or refund for products not performing as stated on the datasheet
- Valid for 12 months from date of delivery
- Response to your inquiry within 24 hours
- We provide support in Chinese, English, French, German, Japanese and Spanish
- Extensive multi-media technical resources to help you
- We investigate all quality concerns to ensure our products perform to the highest standards

If the product does not perform as described on this datasheet, we will offer a refund or replacement. For full details of the Abpromise, please visit <https://www.abcam.com/abpromise> or contact our technical team.

### Terms and conditions

---

- Guarantee only valid for products bought direct from Abcam or one of our authorized distributors