

## Product datasheet

# Anti-MCP1 antibody ab9779

★★★★★ 1 Abreviews 1 References 1 Image

### Overview

<b>Product name</b>	Anti-MCP1 antibody
<b>Description</b>	Rabbit polyclonal to MCP1
<b>Host species</b>	Rabbit
<b>Tested applications</b>	<b>Suitable for:</b> WB, Neutralising, Sandwich ELISA, IHC-FoFr
<b>Species reactivity</b>	<b>Reacts with:</b> Rat
<b>Immunogen</b>	Highly pure (>98%) recombinant rMCAF/MCP-1 (rat Macrophage/Monocyte chemotactic protein-1)

### Properties

<b>Form</b>	Lyophilised: Reconstitute with 200µl of sterile water. Please note that if you receive this product in liquid form it has already been reconstituted as described and no further reconstitution is necessary.
<b>Storage instructions</b>	Shipped at 4°C. Store at +4°C short term (1-2 weeks). Upon delivery aliquot. Store at -20°C long term.
<b>Storage buffer</b>	PBS, pH 7.4, no preservative, sterile filtered
<b>Purity</b>	Immunogen affinity purified
<b>Clonality</b>	Polyclonal
<b>Isotype</b>	unknown
<b>Light chain type</b>	unknown

### Applications

Our [Abpromise guarantee](#) covers the use of **ab9779** in the following tested applications.

The application notes include recommended starting dilutions; optimal dilutions/concentrations should be determined by the end user.

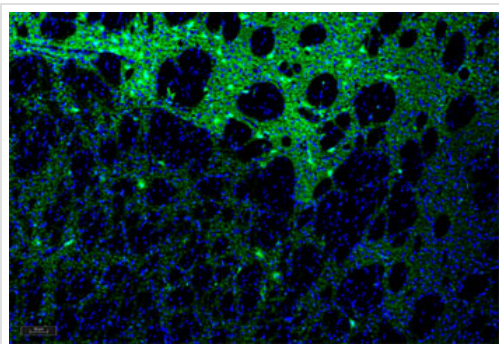
Application	Abreviews	Notes
WB		Use a concentration of 0.1 - 0.2 µg/ml. Predicted molecular weight: 11 kDa. Used in conjunction with compatible secondary reagents the detection limit for recombinant Rat MCP1 is 1.5-3.0 ng/lane, under either reducing or non-reducing conditions.

Application	Abreviews	Notes
Neutralising		Use a concentration of 4 - 6 µg/ml. Yields one-half maximal inhibition [ND <sub>50</sub> ] of the biological activity of Rat MCP1 (100 ng/ml).
Sandwich ELISA		Use a concentration of 0.5 - 2 µg/ml. Allows the detection of at least 0.2 - 0.4 ng/well of recombinant Rat MCP1.
IHC-FoFr	★★★★★	Use at an assay dependent concentration.

## Target

<b>Function</b>	Chemotactic factor that attracts monocytes and basophils but not neutrophils or eosinophils. Augments monocyte anti-tumor activity. Has been implicated in the pathogenesis of diseases characterized by monocytic infiltrates, like psoriasis, rheumatoid arthritis or atherosclerosis. May be involved in the recruitment of monocytes into the arterial wall during the disease process of atherosclerosis.
<b>Sequence similarities</b>	Belongs to the intercrine beta (chemokine CC) family.
<b>Post-translational modifications</b>	Processing at the N-terminus can regulate receptor and target cell selectivity. Deletion of the N-terminal residue converts it from an activator of basophil to an eosinophil chemoattractant.
<b>Cellular localization</b>	Secreted.

## Images



Immunohistochemical analysis of PFA perfusion fixed frozen rat brain, staining MCP1 with ab9779 at 1 µg/ml. A peroxidase conjugated secondary antibody was added and staining was detected using a fluorescein Tyramide Signal Amplification (TSA™) reagent.

Immunohistochemistry (PFA perfusion fixed frozen sections) - Anti-MCP1 antibody (ab9779)

This image is courtesy of the Tissue Profiling group, SciLifeLab Stockholm

**Please note:** All products are "FOR RESEARCH USE ONLY AND ARE NOT INTENDED FOR DIAGNOSTIC OR THERAPEUTIC USE"

## Our Abpromise to you: Quality guaranteed and expert technical support

- Replacement or refund for products not performing as stated on the datasheet
- Valid for 12 months from date of delivery
- Response to your inquiry within 24 hours

- We provide support in Chinese, English, French, German, Japanese and Spanish
- Extensive multi-media technical resources to help you
- We investigate all quality concerns to ensure our products perform to the highest standards

If the product does not perform as described on this datasheet, we will offer a refund or replacement. For full details of the Abpromise, please visit <https://www.abcam.com/abpromise> or contact our technical team.

### **Terms and conditions**

---

- Guarantee only valid for products bought direct from Abcam or one of our authorized distributors