

Product datasheet

Anti-MD1 antibody - Carboxyterminal end ab62507

2 Images

Overview

<b>Product name</b>	Anti-MD1 antibody - Carboxyterminal end
<b>Description</b>	Rabbit polyclonal to MD1 - Carboxyterminal end
<b>Host species</b>	Rabbit
<b>Specificity</b>	This antibody reacts with MD1
<b>Tested applications</b>	<b>Suitable for:</b> WB, IHC-P
<b>Species reactivity</b>	<b>Reacts with:</b> Human
<b>Immunogen</b>	A 14 amino acid synthetic peptide from near the carboxy terminus of human MD1
<b>Positive control</b>	Daudi cell lysate and human spleen tissue

Properties

<b>Form</b>	Liquid
<b>Storage instructions</b>	Shipped at 4°C. Store at +4°C.
<b>Storage buffer</b>	Preservative: 0.02% Sodium Azide Constituents: PBS
<b>Purity</b>	Immunogen affinity purified
<b>Clonality</b>	Polyclonal
<b>Isotype</b>	IgG

Applications

Our [Abpromise guarantee](#) covers the use of **ab62507** in the following tested applications.

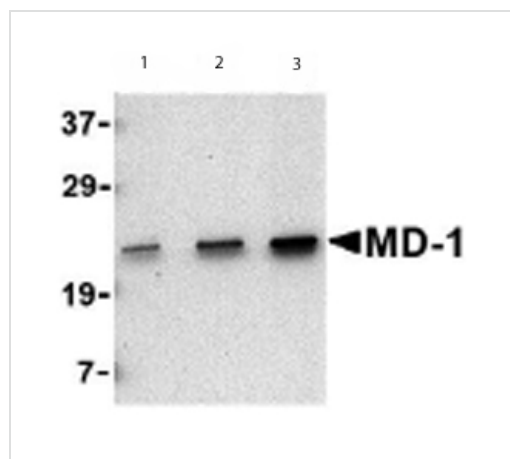
The application notes include recommended starting dilutions; optimal dilutions/concentrations should be determined by the end user.

Application	Abreviews	Notes
WB		Use a concentration of 0.5 - 2 µg/ml. Detects a band of approximately 23 kDa (predicted molecular weight: 18 kDa).
IHC-P		Use a concentration of 2 µg/ml.

## Target

<b>Function</b>	May cooperate with CD180 and TLR4 to mediate the innate immune response to bacterial lipopolysaccharide (LPS) and cytokine production. Important for efficient CD180 cell surface expression.
<b>Tissue specificity</b>	Highly expressed in B-cells, monocytes and tonsil.
<b>Cellular localization</b>	Secreted > extracellular space. Associated with CD180 at the cell surface.

## Images



Western blot - Anti-MD1 antibody - Carboxyterminal end (ab62507)

**Lane 1** : Anti-MD1 antibody - Carboxyterminal end (ab62507) at 0.5 µg/ml

**Lane 2** : Anti-MD1 antibody - Carboxyterminal end (ab62507) at 1 µg/ml

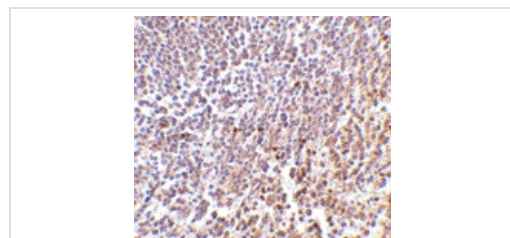
**Lane 3** : Anti-MD1 antibody - Carboxyterminal end (ab62507) at 2 µg/ml

**All lanes** : Daudi cell lysate

Lysates/proteins at 15 µg per lane.

**Predicted band size:** 18 kDa

**Observed band size:** 23 kDa



Immunohistochemistry (Formalin/PFA-fixed paraffin-embedded sections) - MD1 antibody - Carboxyterminal end (ab62507)

Immunohistochemistry of MD1 in paraffin embedded human spleen tissue section with ab62507 antibody at 2 µg/ml.

**Please note:** All products are "FOR RESEARCH USE ONLY AND ARE NOT INTENDED FOR DIAGNOSTIC OR THERAPEUTIC USE"

## Our Abpromise to you: Quality guaranteed and expert technical support

- Replacement or refund for products not performing as stated on the datasheet
- Valid for 12 months from date of delivery
- Response to your inquiry within 24 hours

- We provide support in Chinese, English, French, German, Japanese and Spanish
- Extensive multi-media technical resources to help you
- We investigate all quality concerns to ensure our products perform to the highest standards

If the product does not perform as described on this datasheet, we will offer a refund or replacement. For full details of the Abpromise, please visit <https://www.abcam.com/abpromise> or contact our technical team.

### **Terms and conditions**

---

- Guarantee only valid for products bought direct from Abcam or one of our authorized distributors