

## Product datasheet

# Anti-MEGF9 antibody ab74939

[1 References](#)   [1 Image](#)

### Overview

<b>Product name</b>	Anti-MEGF9 antibody
<b>Description</b>	Rabbit polyclonal to MEGF9
<b>Host species</b>	Rabbit
<b>Tested applications</b>	<b>Suitable for:</b> WB, ELISA
<b>Species reactivity</b>	<b>Reacts with:</b> Human <b>Predicted to work with:</b> Mouse
<b>Immunogen</b>	Synthetic peptide derived from an internal sequence of human MEGF9
<b>Positive control</b>	Extracts from COLO cells.

### Properties

<b>Form</b>	Liquid
<b>Storage instructions</b>	Shipped at 4°C. Upon delivery aliquot and store at -20°C. Avoid repeated freeze / thaw cycles.
<b>Storage buffer</b>	Preservative: 0.02% Sodium Azide Constituents: 50% Glycerol, PBS (without Mg <sup>2+</sup> and Ca <sup>2+</sup> ), 150mM Sodium chloride, pH 7.4
<b>Purity</b>	Immunogen affinity purified
<b>Clonality</b>	Polyclonal
<b>Isotype</b>	IgG

### Applications

Our [Abpromise guarantee](#) covers the use of **ab74939** in the following tested applications.

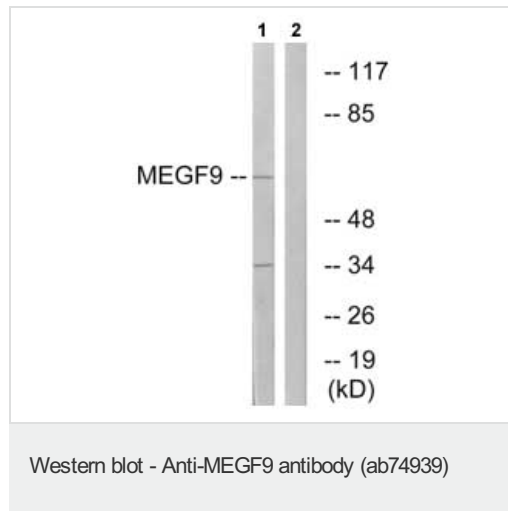
The application notes include recommended starting dilutions; optimal dilutions/concentrations should be determined by the end user.

Application	Abreviews	Notes
WB		1/500 - 1/1000. Predicted molecular weight: 63 kDa.
ELISA		1/40000.

## Target

<b>Sequence similarities</b>	Contains 5 laminin EGF-like domains.
<b>Cellular localization</b>	Membrane.

## Images



**All lanes :** Anti-MEGF9 antibody (ab74939)  
at 1/500 dilution

**Lane 1 :** Extracts from COLO cells

**Lane 2 :** Extracts from COLO cells with  
immunizing peptide at 5 µg

Lysates/proteins at 10 µg per lane.

**Predicted band size:** 63 kDa

**Observed band size:** 63 kDa

**Additional bands at:** 34 kDa. We are unsure  
as to the identity of these extra bands.

**Please note:** All products are "FOR RESEARCH USE ONLY AND ARE NOT INTENDED FOR DIAGNOSTIC OR THERAPEUTIC USE"

## Our Abpromise to you: Quality guaranteed and expert technical support

- Replacement or refund for products not performing as stated on the datasheet
- Valid for 12 months from date of delivery
- Response to your inquiry within 24 hours
- We provide support in Chinese, English, French, German, Japanese and Spanish
- Extensive multi-media technical resources to help you
- We investigate all quality concerns to ensure our products perform to the highest standards

If the product does not perform as described on this datasheet, we will offer a refund or replacement. For full details of the Abpromise, please visit <https://www.abcam.com/abpromise> or contact our technical team.

## Terms and conditions

- Guarantee only valid for products bought direct from Abcam or one of our authorized distributors