


## Product datasheet

# Anti-METTL3 antibody ab66660

[2 Images](#)

### Overview

---

<b>Product name</b>	Anti-METTL3 antibody
<b>Description</b>	Rabbit polyclonal to METTL3
<b>Host species</b>	Rabbit
<b>Tested applications</b>	<b>Suitable for:</b> WB, IHC-P, ELISA
<b>Species reactivity</b>	<b>Reacts with:</b> Human <b>Predicted to work with:</b> Mouse, Rat, Rabbit, Goat, Horse, Guinea pig, Cow, Cat, Dog, Zebrafish 
<b>Immunogen</b>	Synthetic peptide corresponding to Human METTL3 aa 1-50 (N terminal). Sequence: MSDTWSSIQAHKKQLDSLRLRERLQRRRKQDSGHLDLR NPEAALSPTFRSDS  <a href="#">Run BLAST with</a> <a href="#">Run BLAST with</a>
<b>Positive control</b>	IHC-P: Human intestinal tissue sections WB: Fetal thymus lysate

### Properties

---

<b>Form</b>	Liquid
<b>Storage instructions</b>	Shipped at 4°C. Upon delivery aliquot and store at -20°C. Avoid freeze / thaw cycles.
<b>Storage buffer</b>	Preservative: 0.09% Sodium azide Constituents: 2% Sucrose, PBS
<b>Purity</b>	Protein A purified
<b>Clonality</b>	Polyclonal
<b>Isotype</b>	IgG

### Applications

---

Our [Abpromise guarantee](#) covers the use of **ab66660** in the following tested applications.

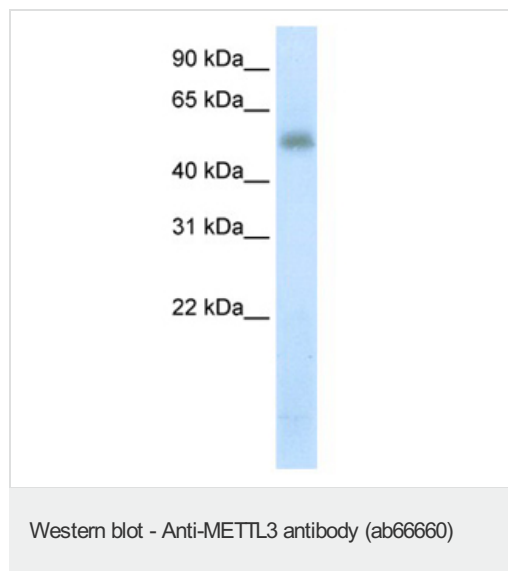
The application notes include recommended starting dilutions; optimal dilutions/concentrations should be determined by the end user.

Application	Abreviews	Notes
WB		Use a concentration of 5 µg/ml. Detects a band of approximately 54 kDa (predicted molecular weight: 64 kDa). Good results were obtained when blocked with 5% non-fat dry milk in 0.05% PBS-T.
IHC-P		Use a concentration of 4 - 8 µg/ml.
ELISA		Use at an assay dependent concentration. ELISA titre using peptide based assay 1:312500.

## Target

<b>Function</b>	N6-methyltransferase that methylates adenosine residues of some mRNAs. N6-methyladenosine (m6A), which is present at internal sites of some mRNAs, may play a role in the efficiency of mRNA splicing, transport or translation.
<b>Tissue specificity</b>	Widely expressed at low level. Expressed in spleen, thymus, prostate, testis, ovary, small intestine, colon and peripheral blood leukocytes.
<b>Sequence similarities</b>	Belongs to the MT-A70-like family.
<b>Post-translational modifications</b>	Phosphorylated upon DNA damage, probably by ATM or ATR.
<b>Cellular localization</b>	Nucleus speckle. Colocalizes with speckles in interphase nuclei. Suggesting that it may be associated with nuclear pre-mRNA splicing components.

## Images



Anti-METTL3 antibody (ab66660) at 5 µg/ml + fetal thymus lysate at 10 µg

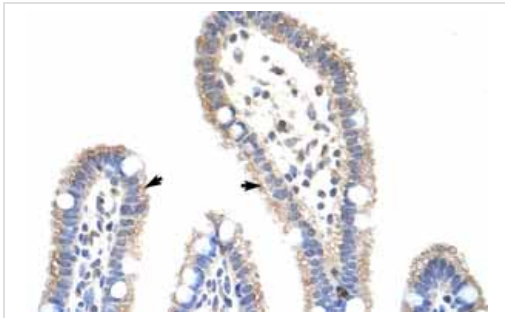
### Secondary

HRP conjugated anti-Rabbit IgG at 1/50000 dilution

**Predicted band size:** 64 kDa

**Observed band size:** 54 kDa

[why is the actual band size different from the predicted?](#)



Immunohistochemistry (Formalin/PFA-fixed paraffin-embedded sections) analysis of human intestine tissue labelling METTL3 with ab66660 at 4-8µg/ml. Arrows indicate positively labelled epithelial cells of the intestinal villus. Magnification: 400X.

Immunohistochemistry (Formalin/PFA-fixed paraffin-embedded sections) - Anti-METTL3 antibody (ab66660)

**Please note:** All products are "FOR RESEARCH USE ONLY AND ARE NOT INTENDED FOR DIAGNOSTIC OR THERAPEUTIC USE"

### Our Abpromise to you: Quality guaranteed and expert technical support

---

- Replacement or refund for products not performing as stated on the datasheet
- Valid for 12 months from date of delivery
- Response to your inquiry within 24 hours
- We provide support in Chinese, English, French, German, Japanese and Spanish
- Extensive multi-media technical resources to help you
- We investigate all quality concerns to ensure our products perform to the highest standards

If the product does not perform as described on this datasheet, we will offer a refund or replacement. For full details of the Abpromise, please visit <https://www.abcam.com/abpromise> or contact our technical team.

### Terms and conditions

---

- Guarantee only valid for products bought direct from Abcam or one of our authorized distributors