

Product datasheet

Anti-MICALL1 antibody ab105665

6 Images

Overview

Product name	Anti-MICALL1 antibody
Description	Rabbit polyclonal to MICALL1
Host species	Rabbit
Tested applications	Suitable for: IHC-P, WB
Species reactivity	Reacts with: Human
Immunogen	Synthetic peptide corresponding to a region within N terminal amino acids 204-253 (ENGPEEGTFV CAEHCARLGP GTRSGTRPGP FSQPKQQHQQ QLAEDAQDVP) of Human MICALL1 (NP_203744). Run BLAST with ExPASy Run BLAST with NCBI
Positive control	Human fetal liver lysate.

Properties

Form	Liquid
Storage instructions	Shipped at 4°C. Upon delivery aliquot and store at -20°C. Avoid repeated freeze / thaw cycles.
Storage buffer	Preservative: 0.09% Sodium azide Constituents: 2% Sucrose, PBS
Purity	Immunogen affinity purified
Clonality	Polyclonal
Isotype	IgG

Applications

Our [Abpromise guarantee](#) covers the use of **ab105665** in the following tested applications.

The application notes include recommended starting dilutions; optimal dilutions/concentrations should be determined by the end user.

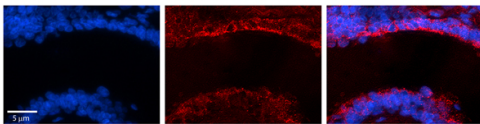
Application	Abreviews	Notes
IHC-P		1/100.
WB		Use a concentration of 0.5 µg/ml. Predicted molecular weight: 93 kDa. Good results were obtained when blocked with 5% non-fat dry milk in 0.05% PBS-T.

Application	Abreviews	Notes
-------------	-----------	-------

Target

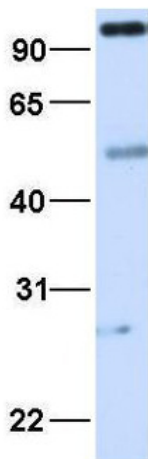
Function	May be a cytoskeletal regulator.
Sequence similarities	Contains 1 CH (calponin-homology) domain. Contains 1 LIM zinc-binding domain.
Cellular localization	Cytoplasm > cytoskeleton.

Images



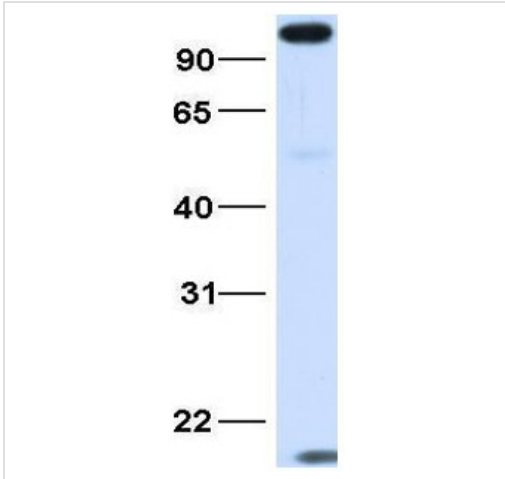
Immunohistochemistry (Formalin/PFA-fixed paraffin-embedded sections) - Anti-MICALL1 antibody (ab105665)

Immunohistochemistry (Formalin/PFA-fixed paraffin-embedded sections) analysis of human bronchial epithelial tissue labelling MICALL1 with ab105665 at 1/100. A Cy3-conjugated donkey anti-rabbit IgG (1/200) was used as the secondary antibody. Positive staining shown in the cytoplasm. Magnification: 20X. Exposure time: 0.5 - 2.0 seconds. Left - DAPI. Middle - MICALL1. Right - Merge.



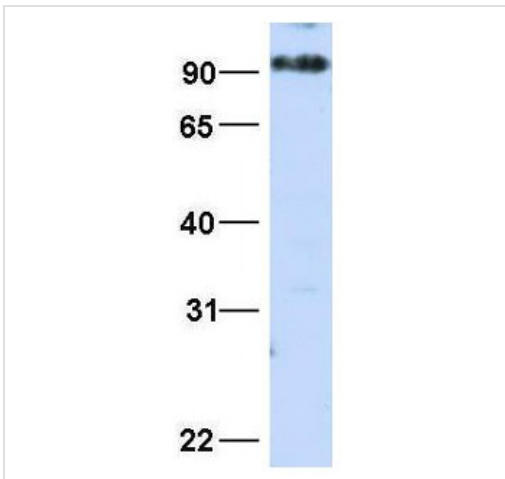
Western blot - Anti-MICALL1 antibody (ab105665)

Western blot analysis of Human fetal lung tissue lysate labeling MICALL1 with ab105665 at 1.0 μg/ml.



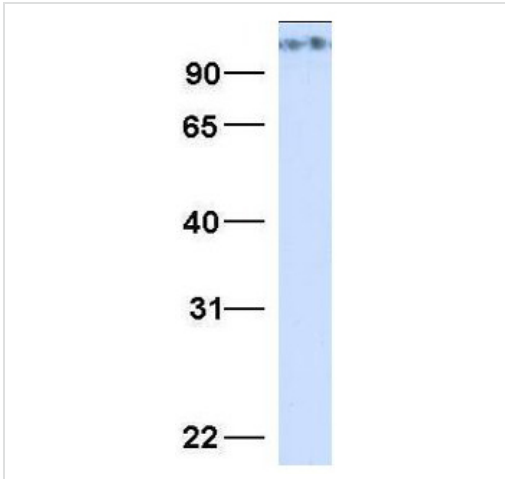
Western blot - Anti-MICALL1 antibody (ab105665)

Western blot analysis of Human adult placenta tissue lysate labeling MICALL1 with ab105665 at 1.0µg/ml.



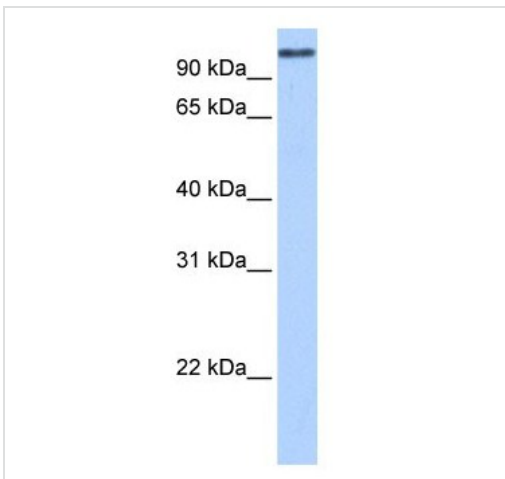
Western blot - Anti-MICALL1 antibody (ab105665)

Western blot analysis of HepG2 cell lysate labeling MICALL1 with ab105665 at 1.0µg/ml.



Western blot analysis of 293T cell lysate labeling MICALL1 with ab105665 at 1.0 µg/ml.

Western blot - Anti-MICALL1 antibody (ab105665)



Anti-MICALL1 antibody (ab105665) at 0.5 µg/ml + Human fetal liver cell lysate at 10 µg

Predicted band size: 93 kDa

Gel concentration: 12%

Western blot - Anti-MICALL1 antibody (ab105665)

Please note: All products are "FOR RESEARCH USE ONLY AND ARE NOT INTENDED FOR DIAGNOSTIC OR THERAPEUTIC USE"

Our Abpromise to you: Quality guaranteed and expert technical support

- Replacement or refund for products not performing as stated on the datasheet
- Valid for 12 months from date of delivery

- Response to your inquiry within 24 hours
- We provide support in Chinese, English, French, German, Japanese and Spanish
- Extensive multi-media technical resources to help you
- We investigate all quality concerns to ensure our products perform to the highest standards

If the product does not perform as described on this datasheet, we will offer a refund or replacement. For full details of the Abpromise, please visit <https://www.abcam.com/abpromise> or contact our technical team.

Terms and conditions

- Guarantee only valid for products bought direct from Abcam or one of our authorized distributors